

MOUNTING INSTRUCTIONS

1. DETERMINE HAND OF DOOR, THEN PREPARE STILE PER TEMPLATE: 10-474 (DRILL TEMPLATE) FOR ACTIVE STILE.
2. IF LOCK IS TO BE USED, PREPARE ACTIVE STILE PER TEMPLATE 10-476.
3. INSTALL ROD & CASE ASSY INTO ACTIVE STILE AND SECURE WITH TWO 1/4-20 (M6-1.0) SHOULDER STUDS. (IF USING LOCK, PERFORM INST. 5 & 6 NEXT.)
4. PLACE ACTIVE PAD OF STILE MAKING CERTAIN THAT ACTUATOR LINK IS PROPERLY ENGAGED (UNDERSIDE OF PIN) TO MECHANISM AND SECURE PAD. ADJUST BOLTS BY SCREWING IN OR OUT TILL TOP OF BOLT IS FLUSH WITH EDGE OF DOOR, WHEN THE PUSH BAR IS FULLY DEPRESSSED. THEN INSTALL BOLT GUIDES WITH SIX #10 x 1/2 F.H. SELF TAPPING SCREWS.
5. INSERT LOCK CYLINDER INTO LOCK MOUNTING PAD AND SECURE WITH LOCK RING PROVIDED. MAKE SURE CYLINDER AND LOCK MOUNTING PAD ARE INSTALLED AS SHOWN. SECURE LOCK PAD WITH 2 EA 8-32 x 1-15/16 FHMS

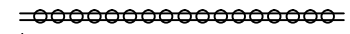
1. START BY REMOVING BRACKET (A),
2. NEXT REMOVE DOGGING PAWL (B)
3. FINALIZE BY RE-ATTACHING BRACKET (A)

NOTE: WHEN NOT
USING MORTISE
CYLINDER, PROCEED
WITH THE
FOLLOWING:

RECOMMENDATIONS FOR MAINTENANCE:

IT IS RECOMMENDED THAT THE FOLLOWING ROUTINE MAINTENANCE CHECKS SHOULD BE TAKEN AT INTERVALS OF NOT MORE THAN ONE MONTH BY THE OCCUPIER OR HIS APPROVED REPRESENTATIVE:

- A) INSPECT AND OPERATE THE PANIC DEVICE TO ENSURE THAT ALL COMPONENTS ARE IN A SATISFACTORY WORKING CONDITION;
- B) ENSURE THAT THE KEEPER(S) IS (ARE) FREE FROM OBSTRUCTION.



THE SAFETY FEATURES OF THIS PRODUCT ARE ESSENTIAL TO IT'S COMPLIANCE WITH EN 179. NO MODIFICATION OF ANY KIND, OTHER THAN THOSE DESCRIBED IN THESE INSTRUCTIONS, ARE PERMITTED.

DOGGING OF DEVICE WITH CYLINDER KEY
TO DOG DEVICE INSERT KEY, FULLY DEPRESS PUSH PAD, HOLD DOWN & TURN KEY CLOCKWISE TO APPROX. TWO O' CLOCK. RETURN KEY TO CENTER FOR REMOVAL.

TO UNDOG TURN KEY COUNTERCLOCKWISE.
DOGGING DEVICE WITH DOGGING PIN

PUSH PUSH PAD DOWN AND HOLD. PUSH DOGGING PIN UP WITH SCREW DRIVER AND TURN 90° TO 180° EITHER DIRECTION, UNTIL DOGGING PIN RELEASES.

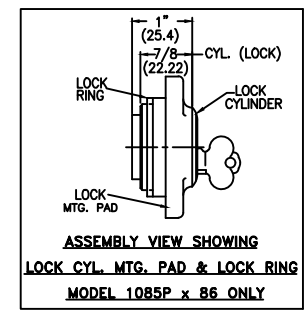
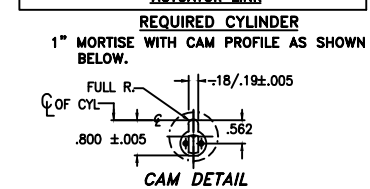
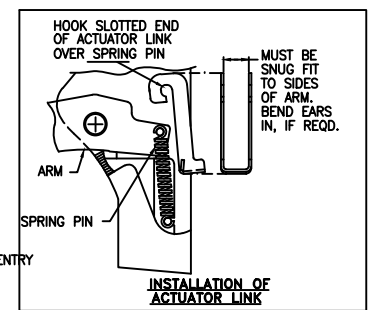
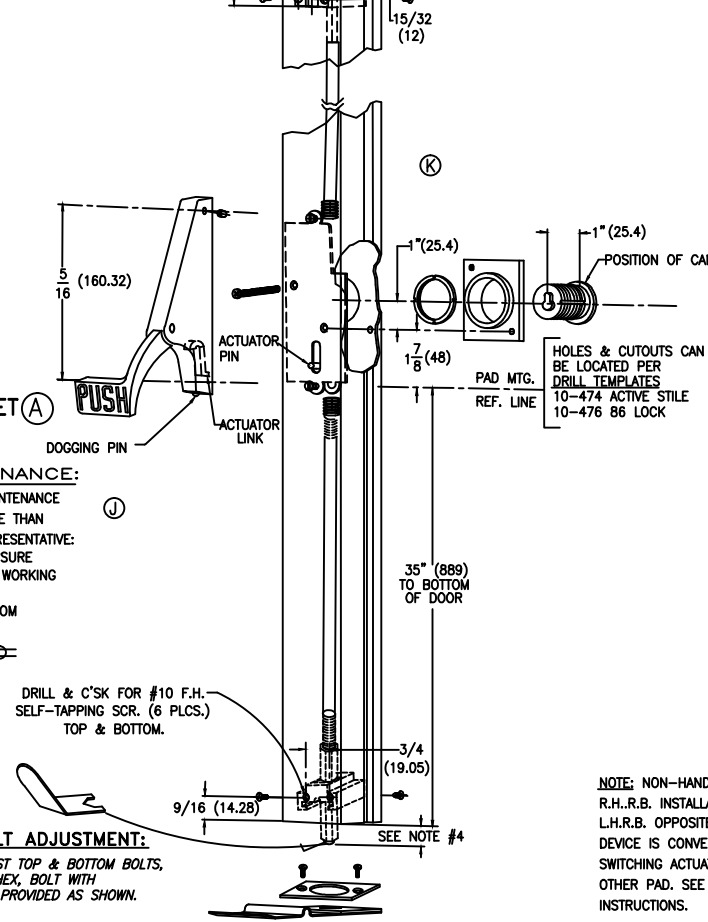
NOTE: THIS PRODUCT IS DESIGNED AND MFRG. TO MEET CLASSIFICATION NO. 37601321B, (K) EN179 STANDARD.

DRILL & C'SK FOR #10 F.H. SELF-TAPPING SCR. (6 PLCS.) TOP & BOTTOM.

BOLT ADJUSTMENT:

TO ADJUST TOP & BOTTOM BOLTS, ROTATE HEX. BOLT WITH WRENCH PROVIDED AS SHOWN.

PATENT NO 3,993,335



NOTE: NON-HANDED DEVICE R.H./R.B. INSTALLATION SHOWN L.H./R.B. OPPOSITE DEVICE IS CONVERTED BY SWITCHING ACTUATOR LINK TO OTHER PAD. SEE ABOVE INSTRUCTIONS.

LH/RHRB SHOWN

FILE NO.	31-1085P-KITS	QTY. USED	1	FINISH	HEAT TREAT	INSTALLATION GUIDE 1085P & 1085Px86 PANIC DEVICES	SHEET 1 OF 1 SHEETS DWG. NO. 10-483
L 10.01.05 ADD NOTATION: "WHEN NOT USING MORTISE CYLINDER"				ECN1863			
K 5.25.05 37601321B WAS 36501321A				RM			
J 02/23/00 ADD HUMP TYPE STRIKE				ECN1339			
H 12/27/98 ADD MAINT. INSTRUCTIONS				ECN1143			
G 10/11/97 REDRAWN, ELIMINATE TOP & BTM HOLE FOR ADJUSTMENT (BOLT GUIDE)				ECN1101			
DIMENSIONAL TOLERANCES UNLESS OTHERWISE SPECIFIED				APPROVALS DATE			
DECIMAL DIMENSIONS .XX ± .010				APPROVED			
ANGULAR ± ° FRACTIONAL ± 1/64				CHECKED			
DRAWN RM				7/7/97			
MATERIAL				SCALE NONE			
NEXT ASSY.				SHEET 1 OF 1 SHEETS			
QTY. USED				REV.			

