

CRL | STONE

TOOLS AND ACCESSORIES FOR STONE PROCESSING

CRL Stone, a division of C. R. Laurence of Europe, is dedicated to providing the most comprehensive range of tools and accessories in the stone market today. Our products are held in stock at our 110,000 square foot premises in Greater Manchester and are available for immediate delivery.

Within this catalogue you will find an extensive range of Stone Tools and Accessories, including Polishing and Grinding equipment, Diamond Blades, Adhesives and Fillers, Care and Protection products, and CNC Tooling, as well as an introduction to CRL Quartz Surfaces and Ceralsio Ceramic Surfaces.



**CRL | STONE**



# Contents

Polishing & Grinding Equipment	8-11
Backing Pads	12-15
Diamond Blades for Bridge Saw & Angle Grinders	16-20
Wet & Dry Polishing Discs	22-25
Hand Polishing & Finishing Accessories	26-29
Edge Polishing Machine Tooling	30-35
Diamond Tooling for CNC & Hand Held Machines	36-51
Adhesives & Fillers	52-67
Silicones, Sealants & Caulks	68-73
Care & Protection Products	74-85
Measuring, Fixing, Safety Tool & Accessories	86-92
Templating, Packing Tools & Tapes	94-101
Handling & Moving Tools	102-111
About CRL Quartz Surfaces	112-117
About Ceralsio Ceramic Surfaces	118-125
Samples and Promotional Products	126-127
Index	128-131



## Carriage

To get the best economy for your orders, we invite you to take advantage of our FREE shipping offer. Our customers in the UK, Isle of Man, Isle of Wight, and Eire (excluding the Channel Isles) get FREE delivery of orders totalling £500 or more when shipped via normal methods for standard two to three working day delivery. Orders below £500, or orders that must be shipped via common carrier or for timed/ weekend deliveries do not qualify.

Please contact us for more details.

## We welcome you to visit our Trade Counter

Not only does our facility have a product display area, we also have a large trade counter and dedicated team on hand to assist with your order. At the trade counter you can place and pick up orders in person. And when you place your order in advance by phone, fax, or over the Internet we can have it ready and waiting for you.

**Trade Counter hours are 8am to 5pm,  
Monday to Friday.**

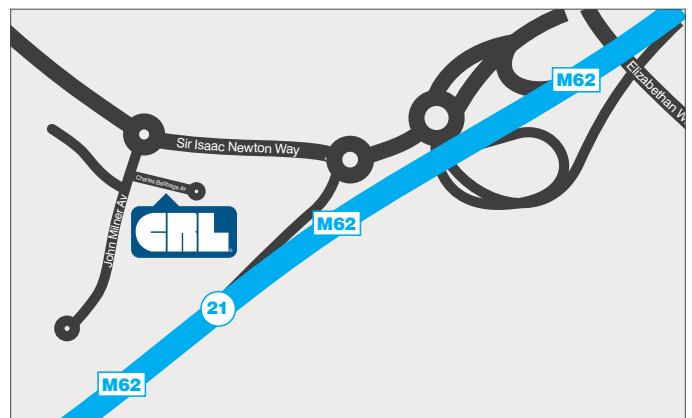


### Address Details:

CRL Stone  
Charles Babbage Avenue  
Kingsway Business Park  
Rochdale OL16 4NW  
UK

Telephone : +44 1706 863 600  
Freephone: 00 800 0421 6144  
Freefax: 00 800 0262 3299

e-mail: [tools@crlstone.co.uk](mailto:tools@crlstone.co.uk) | [crlaurence.co.uk](http://crlaurence.co.uk)





## See our slab showroom

To see full size slabs of our Ceralsio ceramic and CRL Quartz surface ranges, come and visit our showroom in Greater Manchester. We are open Monday to Friday from 8am to 5pm.

- Thousands of slabs in stock
- CRL Stone safely handles jumbo slabs of quartz and ceramic



# designed for living. made for life.



CALACATTA GR S - CER302N

Ceralsio is a hard-wearing and versatile range of ceramic surfaces suitable for worktops, vanity tops, floor tiling and wall cladding.

With its many advantages it is the ideal surface for indoor and outdoor applications. Available in a large range of colours and finishes and many large-format tile sizes.



See page 118

e: [ceralsio@crlstone.co.uk](mailto:ceralsio@crlstone.co.uk)  
www.ceralsio.co.uk



Ceralsio  
CERAMIC SURFACES

CRL | STONE





Modern living  
made easy.

MONTANA GRIS - QZ133

CRL Quartz is a highly durable engineered quartz stone, available in a large range of colours and in extra-large slab format allowing for greater consistency in design. Hard-wearing and easy to care for, it is the perfect surface for the kitchen and bathroom.



See page 112

e: [crlquartz@crlstone.co.uk](mailto:crlquartz@crlstone.co.uk)  
[www.crlquartz.co.uk](http://www.crlquartz.co.uk)



CRL  
**Quartz**  
SURFACES

**CRL | STONE**





# Polishing & Grinding Equipment

From dry polishing machines to wet cutting, CRL Stone offers a wide range of power tools ideal for all types of natural and engineered stone, tile, concrete, and masonry.

## CRL Polishers & Grinders

### CRL FLEX L12-3 Wet Polishing Machine

Cat. No. 490017

- Voltage: 110 Volts
- Power Input: 1200 Watts
- Max Diameter: 115 mm
- Tool-holder Shank: M14
- No Load Speed: 3500 rpm
- Net Weight: 2.5 kg



### CRL FLEX L1506VR Dry Polishing Machine / Grinder

Cat. No. 490025A  
240 Volts

Cat. No. 490025B  
110 Volts

- Power Input: 1200 Watts
- Max Diameter: 125 mm
- Tool-holder Shank: M14
- No Load Speed: 2200 - 6800 rpm
- Net Weight: 1.9 kg



FLEX approved UK distributor.  
Contact our stone operations department for all your FLEX needs.

2-year warranty

## CRL Polishers & Grinders

---

### CRL Gison GPW-7 Air Wet Stone Sander/Polisher

Cat. No. 490102A

- Power Input (Horse Power): 321 Watts (0.43 HP)
- Pad Size: 100 mm
- Tool-holder Shank (Sanding Pad): M14
- No Load Speed: 4500 rpm
- Net Weight: 1.17 kg
- Air Pressure: 90 psi



The UK'S most popular air polisher

### CRL Makita® PW5000C Wet Stone Polisher

Cat. No. EUPW5000C

- Voltage: 110 Volts
- Power Input: 900 Watts
- Pad Size: 100 mm
- Tool-holder Shank: M14
- No Load Speed: 2000 - 4000 rpm
- Net Weight: 2.2 kg





## CRL Grinders

---

### CRL Makita® 9565CV 125 mm Angle Grinder

Cat. No. EUGA5040CA

- Voltage: 110 Volts
  - Power Input: 1400 Watts
  - Max Diameter: 125 mm
  - Bore Size: 22 mm
  - Tool Holder Shank: M14
  - No Load Speed: 2800 - 11000 rpm
  - Net Weight: 1.8 kg
- \*NOTE: 240 Volts available on request



### CRL Makita® 9565H 125 mm Angle Grinder

Cat. No. EU9565PCVA

Voltage: 110 Volts

Cat. No. EU9565PCVB

Voltage: 240 Volts

- Power Input: 1100 Watts
- Max Diameter: 125 mm
- Bore Size: 22 mm
- Tool Holder Shank: M14
- No Load Speed: 1100 rpm
- Net Weight: 1.8 kg





# Backing Pads

CRL Stone has an extensive range of backing pads including with or without foam backing and hook & loop pads.

# CRL Backing Pads

---

## CRL Economy No Foam Backing Pad

- Suitable for polishing flat surfaces
- Supplied with or without water holes with M14 bore



### With Water Holes

**Cat. No. 53BP1**  
Diameter: 98 mm

**Cat. No. 53BP2**  
Diameter: 113 mm

**Cat. No. 53BP3**  
Diameter: 123 mm

### Without Water Holes

**Cat. No. 53BP2A**  
Diameter: 113 mm

**Cat. No. 53BP3A**  
Diameter: 123 mm

---

## CRL Extra Grip Backing Pad

- Suitable for polishing flat surfaces
- Supplied with M14 bore
- With water holes
- Diameter: 98 mm

**Cat. No. 53VBPE1**



---

## CRL Economy Foam Backing Pad

- Suitable for polishing curved surfaces
- Supplied with M14 bore
- Can be used wet or dry
- With water holes
- Diameter: 98 mm

**Cat. No. 53BPF1**





## CRL Backing Pads

---



### CRL 3M® Premium Quality Foam/No Foam Backing Pad

- Suitable for polishing all surfaces
- Supplied with M14 bore
- Diameter: 100 mm

**Cat. No. 4000501**

Foam Type

**Cat. No. 4000502**

No Foam Type



### CRL Snail/Hook & Loop Backing Pad

- Suitable for all types of wet or dry polishing discs, used in combination with 4900102 Snail Holder - see below
- No foam type
- Diameter: 100 mm

**Cat. No. 4001004**



### CRL Snail Holder

- Suitable for attaching snail fitting abrasives or pads
- Supplied with snail lock to M14 backing pad
- Diameter: 100 mm

**Cat. No. 4900102**

## CRL Backing Pads



### CRL Fibre Backing Pad

- Nylon backing pad
- Can be used with Spiraflex discs - see page 23
- Can be used with felt mop - see page 29

**Cat. No. 53NBP00125**

Diameter: 125 mm

**Cat. No. 53NBP00171**

Diameter: 180 mm



### CRL Backing Pad for Plain Backed Paper Discs

- The most commonly used backing pad for plain backed paper discs
- Very high quality rubber for extra life
- Diameter: 125 mm

**Cat. No. 53BP00125A**

**For SAIT Plain Backed Discs and Spray Adhesive, see page 23**



### CRL Backing Pad for Hook & Loop Backed Paper Discs

- Metal backed backing pad for plain backed paper discs
- More rigid than the popular rubber backed pad
- Diameter: 125 mm

**Cat. No. 53BPA00125**



### CRL Backing Pad for Hook & Loop Backed Paper Discs

- The most commonly used backing pad for hook & loop backed paper discs
- Very high quality rubber for extra life
- Diameter: 125 mm

**Cat. No. 53VBP00125A**

**For Hook & Loop Backed SAIT Discs, see page 23**



# Diamond Blades for Bridge Saw & Angle Grinders

CRL Stone's great value wet and dry cutting diamond blades (including Sankyo and Italdiamant) for engineered stone, concrete, granite, marble and other natural stone are high quality diamond blades which can improve your price-performance ratio.

CRL Stone also have an extensive collection of bridge saw blades which are ideal for use on quartz, granite and marble, offering excellent value for such a high quality. Blades are available in many sizes ranging from 350 mm to 600 mm diameter.



## CRL Angle Grinder Blades for Engineered Stone, Granite, Concrete and Natural Stone



### CRL Sankyo SD Sprinter Blade

- Continuous rim
- 22.2 mm bore

**Cat. No. 51020011G**  
Diameter: 115 mm

**Cat. No. 51020006G**  
Diameter: 125 mm

**Cat. No. 51020007G**  
Diameter: 150 mm



### CRL Sankyo Sprinter Type Blade

- Continuous rim
- Metal flange
- Diameter: 230 mm

**Cat. No. 51020017G**



### CRL Sankyo SE-X Blade

- Continuous rim
- M14 thread

**Cat. No. 51020016G**  
Diameter: 125 mm

**Cat. No. 51020036G**  
Diameter: 150 mm



### CRL Italdiamant RD Economy Blade Type

- Continuous rim
- 22.2 mm bore

**Cat. No. 51020011GP**  
Diameter: 115 mm

**Cat. No. 51020006GP**  
Diameter: 125 mm

**Cat. No 51020007GP**  
Diameter: 150 mm

**Cat. No 51020005GP**  
Diameter: 230 mm



### CRL Italdiamant Continuous Rim Blade

- Continuous rim
- Metal flange
- Diameter: 230 mm

**Cat. No. 51020017GP**



### CRL Italdiamant Continuous Rim Blade

- Continuous rim
- M14 thread
- Diameter: 125 mm

**Cat. No. 51020016GP**

## CRL Angle Grinder Blades for Engineered Stone, Granite, Concrete and Natural Stone

---



### CRL Sankyo SE-5X Blade

- Segmented rim
- 22.2 mm bore

**Cat. No. 51020001G**  
Diameter: 115 mm

**Cat. No. 51020020G**  
Diameter: 230 mm

---



### CRL Sankyo SE-9X Blade

- Segmented rim
- Metal flange
- Diameter: 230 mm

**Cat. No. 51020023G**

---



### CRL Italdiamant Segmented Rim Blade with 22.2 mm Bore

- Segmented rim

**Cat. No. 51020001GP**  
Diameter: 115 mm

**Cat. No. 51020029GP**  
Diameter: 150 mm

**Cat. No. 51020033GP**  
Diameter: 175 mm

**Cat. No. 51020020GP**  
Diameter: 230 mm

---



### CRL Italdiamant Segmented Rim Blade with Metal Flange

- Segmented rim
- Diameter: 230 mm

**Cat. No. 51020023GP**

---



### CRL Italdiamant Segmented Rim Blade with M14 Thread

- Segmented rim
- Diameter: 125 mm

**Cat. No. 51020032GP**

---

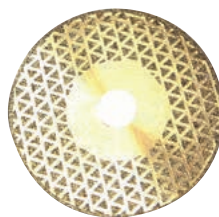
## CRL Angle Grinder Blades for Marble, Porcelain and Ceramic



### CRL Italdiamant Blade for Marble

**Cat. No. 51020018MP**

- Segmented rim
- 22.2 mm bore
- Diameter: 125 mm



### CRL Vanity Blade for Marble

**Cat. No. 51019001VA**

- Vanity blade
- 22.2 mm bore
- Diameter: 125 mm



### CRL Vanity Blade for Marble

**Cat. No. 51019003VA**

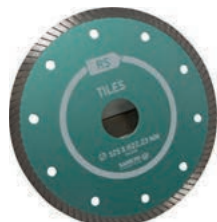
- Vanity blade
- M14 thread
- Diameter: 125 mm



### CRL Sankyo Blade for Marble

**Cat. No. 51020024M**

- Continuous rim
- 22.2 mm bore
- Diameter: 115 mm



### CRL Sankyo Blade for Porcelain and Ceramic

**Cat. No. 51020RS5**

- 1 mm thick blade
- Diameter: 125 mm

**UCS**

Suitable for ceramic

For additional **UCS** tooling  
see page 49

## Speciality Blades and Cup Wheel



### CRL Sankyo Cup Wheel for Granite

**Cat. No. 51020010GPWM**

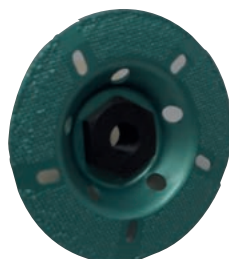
- M14 thread
- Diameter: 100 mm



### CRL Italdiamant Cup Wheel for Granite

**Cat. No. 51020010GP**

- M14 thread
- Diameter: 100 mm



### CRL Sankyo Cup Wheel for Marble

**Cat. No. 51020010M**

- M14 thread
- Vacuum brazed
- Diameter: 100 mm

# CRL Diamond Bridge Saw Blades



## CRL Silent Laser Welded Diamond Saw Blade for Granite and Quartz

- Bore Hole: 60 mm

**Cat. No. 47PG35060S**  
Diameter: 350 mm

**Cat. No. 47PG40060S**  
Diameter: 400 mm

**Cat. No. 47PG45060S**  
Diameter: 450 mm

**Cat. No. 47PG50060S**  
Diameter: 500 mm

**Cat. No. 47PG60060S**  
Diameter: 600 mm

Other sizes available on request

Ideal for cutting granite and quartz



## CRL Diamond Saw Blade for Ceralsio and Other Ultra Compact Surfaces

- Bore Hole: 60 mm

**Cat. No. 47MTJ64001**  
Diameter: 350 mm  
Feed: 500-1500 mm/min

**Cat. No. 47MTJ64002**  
Diameter: 400 mm  
Feed: 500-1500 mm/min

**Cat. No. 47MTJ64003**  
Diameter: 450 mm  
Feed: 500-1500 mm/min

**Cat. No. 47MTJ64006**  
Diameter: 350 mm  
Feed: 1200-2000 mm/min

**Cat. No. 47MTJ64007**  
Diameter: 400 mm  
Feed: 1200-2000 mm/min

**Cat. No. 47MTJ64008**  
Diameter: 450 mm  
Feed: 1200-2000 mm/min



47MTJ64001 / 2 / 3



47MTJ64006 / 7 / 8

HIGH SPEED  
BLADE

UCS

For additional **UCS** tooling see page 49

## CRL Silent Diamond Saw Blade for Marble

**Cat. No. 47PM35050S**  
Diameter: 350 mm  
Bore Hole: 50 mm

**Cat. No. 47PM40060S**  
Diameter: 400 mm  
Bore Hole: 60 mm

**Cat. No. 47PM50060S**  
Diameter: 500 mm  
Bore Hole: 60 mm







# Surfaces by CRL Stone.

The ultimate choice for worktops and vanity tops.

See page 112

CERVINO - SATIN - CER409S

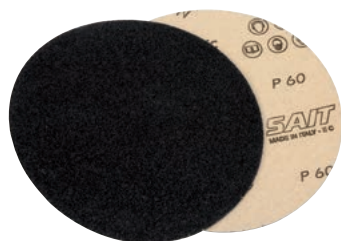


# Wet and Dry Polishing Discs

CRL Stone offers a fantastic range of wet and dry polishing discs ideal for quartz, marble, sandstone, limestone and granite surfaces to achieve a superb gloss or honed finish.



## CRL Wet and Dry Polishing Discs



### CRL SAIT Plain Backed Sanding Discs

- Plain backed silicon carbide sanding disc for dry use only
- Diameter: 125 mm
- 100 discs per box

**Cat. No. 53203S**  
Grit: 60

**Cat. No. 53204S**  
Grit: 80

**Cat. No. 53205S**  
Grit: 120

**Cat. No. 53206S**  
Grit: 220

**Cat. No. 53207S**  
Grit: 320

**Cat. No. 53209S**  
Grit: 400

**Cat. No. 532095S**  
Grit: 500

**Cat. No. 53210S**  
Grit: 600

**Cat. No. 53212S**  
Grit: 800

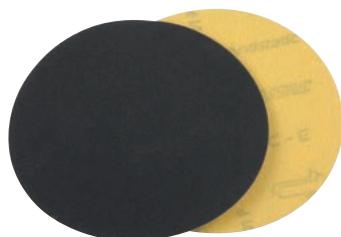
**Cat. No. 53215S**  
Grit: 1200



### CRL Multi Spray Adhesive

- Spray adhesive for use with plain backed silicon carbide paper discs
- 400 ml can

**Cat. No. EUCRL66**



### CRL SAIT Hook & Loop Backed Sanding Discs

- Hook & Loop backed silicon carbide sanding discs for dry use only
- Diameter: 125 mm
- 100 discs per pack

**Cat. No. 53202SV**  
Grit: 40

**Cat. No. 53203SV**  
Grit: 60

**Cat. No. 53204SV**  
Grit: 80

**Cat. No. 53205SV**  
Grit: 120

**Cat. No. 53206SV**  
Grit: 220

**Cat. No. 53207SV**  
Grit: 320

**Cat. No. 53209SV**  
Grit: 400

**Cat. No. 532095SV**  
Grit: 500

**Cat. No. 53210SV**  
Grit: 600

**Cat. No. 53212SV**  
Grit: 800

**Cat. No. 53214SV**  
Grit: 1200



### CRL Spiraflex Discs - Dished

- High quality silicon carbide grinding discs ideal for all grinding applications
- Sold per unit

**Diameter: 125 mm**

**Cat. No. 53SFBC12516**  
Grit: 16

**Cat. No. 53SFBC12524**  
Grit: 24

**Cat. No. 53SFBC12536**  
Grit: 36

**Cat. No. 53SFBC12560**  
Grit: 60

**Cat. No. 53SFBC12580**  
Grit: 80

**Cat. No. 53SFBC125120**  
Grit: 120

**Diameter: 180 mm**

**Cat. No. 53SFBC18016**  
Grit: 16

**Cat. No. 53SFBC18024**  
Grit: 24

**Cat. No. 53SFBC18036**  
Grit: 36

**Cat. No. 53SFBC18060**  
Grit: 60

**Cat. No. 53SFBC18080**  
Grit: 80



### CRL Carborundum Cup Wheel

- A solid carborundum cup wheel for dry grinding all natural stone
- Tapered cup
- Supplied with M14 fitting

**Cat. No. 531106016**  
Grit: 16

**Cat. No. 531106024**  
Grit: 24

**Cat. No. 531106036**  
Grit: 36

**Cat. No. 531106060**  
Grit: 60

**Cat. No. 531106080**  
Grit: 80

**Cat. No. 5311060120**  
Grit: 120

**Cat. No. 5311060220**  
Grit: 220

**Cat. No. 5311060320**  
Grit: 320

**Cat. No. 5311060400**  
Grit: 400

For suitable Backing Pads see page 15

## CRL Wet and Dry Polishing Discs

### CRL Premium Dry Polishing Discs With Hook & Loop Backing

- Hexagon pattern dry polishing discs
- Diameter: 100 mm
- For use with granite
- Ideal for on site polishing
- Easy to use
- Colours may vary



Full set

**Cat. No. 410211001**  
Grit: 50, Colour: Blue

**Cat. No. 410211002**  
Grit: 100, Colour: Yellow

**Cat. No. 410211003**  
Grit: 200, Colour: Orange

**Cat. No. 410211004**  
Grit: 400, Colour: Red

**Cat. No. 410211005**  
Grit: 800, Colour: Dark Green

**Cat. No. 410211006**  
Grit: 1500, Colour: Turquoise

**Cat. No. 410211007**  
Grit: 3000, Colour: Brown

**Cat. No. 410211008**  
Grit: BUFF, Colour: Black

**Cat. No. 41021SET**  
Full set

### CRL Premium Wet Polishing Discs With Hook & Loop Backing

- Hook & Loop backed wet polishing discs
- Diameter: 100 mm
- For use with quartz and granite
- Very high diamond content resulting in a superb finish
- Colours may vary



Full set

**Cat. No. 410201001A**  
Grit: 60, Colour: Blue

**Cat. No. 410201002A**  
Grit: 150, Colour: Yellow

**Cat. No. 410201003A**  
Grit: 300, Colour: Orange

**Cat. No. 410201004A**  
Grit: 500, Colour: Red

**Cat. No. 410201005A**  
Grit: 1000, Colour: Turquoise

**Cat. No. 410201006A**  
Grit: 2000, Colour: Dark Green

**Cat. No. 410201007A**  
Grit: 3000, Colour: Pink

**Cat. No. 41020SET**  
Full set

Ideal for use on Quartz

Discs can be combined for bulk pricing

For Backing Pads see pages 12-15



## CRL Wet and Dry Polishing Discs



### CRL Kwik Flex Discs

- Hook & Loop backed wet polishing discs
- Diameter: 100 mm
- Uses advanced diamond bond technology
- Gives up to 30% extra life
- Improved for efficiency and less waste
- Colours may vary



**Cat. No. 410261001**  
Grit: 60, Colour: Green

**Cat. No. 410261002**  
Grit: 120, Colour: Black

**Cat. No. 410261003**  
Grit: 200, Colour: Red

**Cat. No. 410261004**  
Grit: 400, Colour: Yellow

**Cat. No. 410261005**  
Grit: 1000, Colour: White

**Cat. No. 410261006**  
Grit: 2000, Colour: Blue



### CRL Dia Solid Discs

- Solid discs
- Diameter: 100 mm
- Used for polishing flat granite edges
- Ideally used with centrally water fed machines
- M14 fitting



**Cat. No. 410271001**  
Grit: 60, Colour: Green

**Cat. No. 410271002**  
Grit: 120, Colour: Black

**Cat. No. 410271003**  
Grit: 200, Colour: Red

**Cat. No. 410271004**  
Grit: 400, Colour: Yellow

**Cat. No. 410271005**  
Grit: 800, Colour: White

**Cat. No. 410271006**  
Grit: 1800, Colour: Blue



### CRL AS70 Discs With M14 Fitting

- For wet or dry polishing
- Diameter: 100 mm
- For use with marble, sandstone or limestone
- Also works well on engineered stone



**Cat. No. 400091001**  
Grit: 60, Colour: Green

**Cat. No. 400091002**  
Grit: 120, Colour: Black

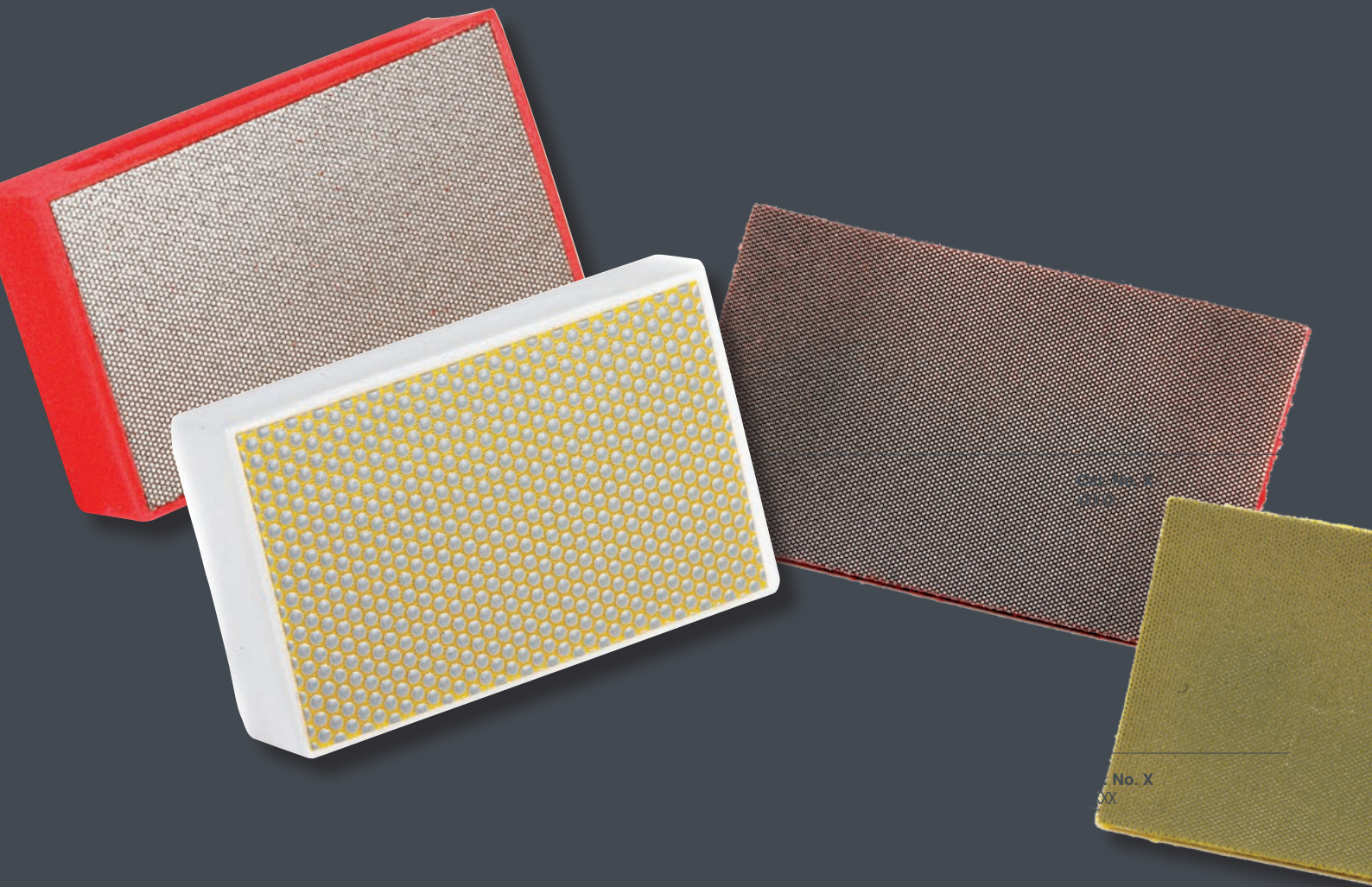
**Cat. No. 400091003**  
Grit: 200, Colour: Red

**Cat. No. 400091004**  
Grit: 400, Colour: Yellow

**Cat. No. 400091005**  
Grit: 800, Colour: White

**Cat. No. 400091006**  
Grit: 1800, Colour: Blue

Discs can be combined for bulk pricing



# Hand Polishing & Finishing Accessories

CRL Stone's collection includes hand polishing accessories, from pads and files to waxes and wire wool.

# CRL Hand Polishing & Finishing Accessories



## CRL Diamond Hand Pads

- A moulded foam, hand rubbing block faced with flexible diamond abrasive
- Specially designed for a more resilient backing for extra cut and durability
- Contoured profile for enhanced comfort
- For use on flat or radius surfaces
- Length: 90 mm
- Width: 55 mm

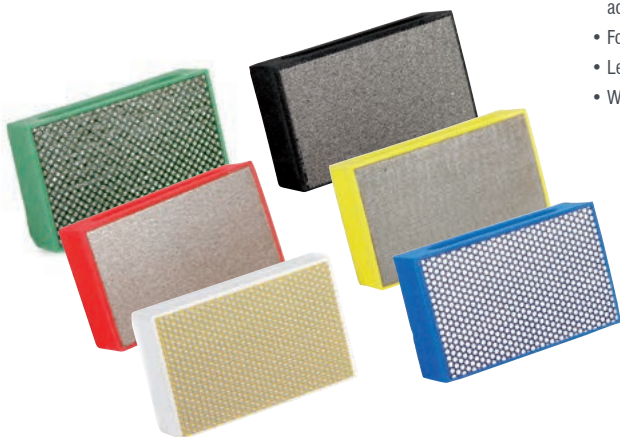
**Cat. No. DHP60**  
Grit: 60, Colour: Green

**Cat. No. DHP120**  
Grit: 120, Colour: Black

**Cat. No. DHP220**  
Grit: 200, Colour: Red

**Cat. No. DHP400**  
Grit: 400, Colour: Yellow

**Cat. No. DHPSET**  
Set of above pads



## CRL Hand Pads

- The DIAFACE diamond hand lap is an inexpensive tool for achieving a quick, high quality finish
- For use on flat or radius surfaces
- Length: 90 mm
- Width: 55 mm

**Cat. No. 51015001**  
Grit: 60, Colour: Green

**Cat. No. 51015002**  
Grit: 120, Colour: Black

**Cat. No. 51015003**  
Grit: 200, Colour: Red

**Cat. No. 51015004**  
Grit: 400, Colour: Yellow

**Cat. No. 51015005**  
Grit: 600, Colour: White

**Cat. No. 51015006**  
Grit: 1000, Colour: Blue

## CRL 3M® Grit Flexible Diamond Hand Pads

- A diamond surface is bonded to a comfortable foam backing with finger holds
- Can be used wet or dry
- For use on flat or radius surfaces
- Length: 95 mm
- Width: 57 mm

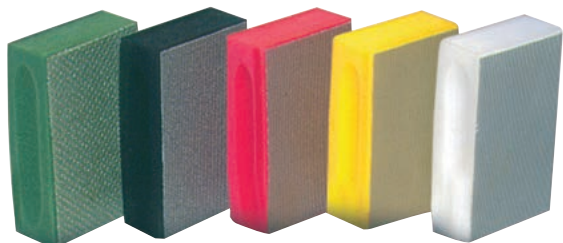
**Cat. No. Z2G6021**  
Grit: 60, Colour: Green

**Cat. No. Z2B12018**  
Grit: 120, Colour: Black

**Cat. No. Z2R22018**  
Grit: 220, Colour: Red

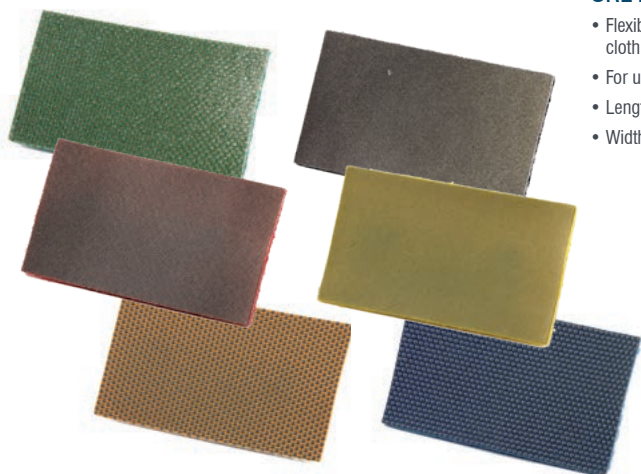
**Cat. No. Z2Y40018**  
Grit: 400, Colour: Yellow

**Cat. No. Z2SET**  
Set of above pads





## CRL Hand Polishing & Finishing Accessories



### CRL Hand Sheets

- Flexible diamond abrasive material reinforced with a heavy-duty cloth to a colour coded loop material
- For use on flat or radius surfaces
- Length: 125 mm
- Width: 70 mm

**Cat. No. 510110A**  
Grit: 60, Colour: Green

**Cat. No. 510112A**  
Grit: 120, Colour: Black

**Cat. No. 510114A**  
Grit: 200, Colour: Red

**Cat. No. 510116A**  
Grit: 400, Colour: Yellow

**Cat. No. 510118A**  
Grit: 600, Colour: White

**Cat. No. 510120A**  
Grit: 1000, Colour: Blue



### CRL Hand-E-Files Diamond Coated

- Diamond coated files for general purpose use
- 4 files per pack
- Including shapes 1-4

**Cat. No. 1313H**



### CRL Polishing Wax

- Popular Cera polishing wax for finishing light and dark natural stone
- 1 litre tin

**Cat. No. 4803002**  
Colour: Black

**Cat. No. 4803002A**  
Colour: Clear

Stitched Mops and Felt Donuts for polishing wax, see page 29



### CRL Stucco Wax Sticks

- Used for filling small chips and fissures
- For all types of natural stone
- Supplied in 1 kg bag (approx. 8 sticks)

**Cat. No. 48079004**  
Colour: Black

**Cat. No. 48079005**  
Colour: Dark Straw

**Cat. No. 48079006**  
Colour: Light Brown

**Cat. No. 48079007**  
Colour: Red

**Cat. No. 48079008**  
Colour: Light Straw

**Cat. No. 48079009**  
Colour: White

**Cat. No. 48079010**  
Colour: Dark Brown



# CRL Hand Polishing & Finishing Accessories



## CRL Wire Wool

- Supplied in 1 lb bags

**Cat. No. 53WWC**  
Grade: Coarse No. 3

**Cat. No. 53WWM**  
Grade: Medium No. 1-2

**Cat. No. 53WWF**  
Grade: Fine No. 0

**Cat. No. 53WWFF**  
Grade: Ultra Fine No. 000



53PM6X2



53PMA

## CRL Stitched Mop

- Layers of soft cloth bonded together
- Supplied in various diameters and thicknesses
- For use with Hyfin polishing bar and polishing wax - see below
- Attached to the polisher with Pig Tail Mop adaptor

**Cat. No. 53PM6X2**  
Size: 152 mm x 50 mm

**Cat. No. 53PM8X1**  
Size: 203 mm x 25 mm

**Cat. No. 53MP8X2**  
Size: 203 mm x 50 mm

**Cat. No. 53PMA**  
Pig Tail Mop Adaptor for  
Stitched Mop



## CRL Hyfin Polishing Bar

- Polishing bar used for finishing marble and granite
- Used with a stitch mop to enhance the final gloss - see above
- Diameter: 42 mm
- Length: 75 mm

**Cat. No. 48082002**



## CRL Felt Mop - Tie On

- Genuine 100% sheepskin lambs wool bonnet
- Normally used with fibre backing pad
- Used with 53NBP00125 fibre backing pad - see page 15

**Cat. No. 53LWB00125**  
Diameter: 125 mm

**Cat. No. 53LWB00180**  
Diameter: 178 mm



## CRL Felt Donuts

- 20 mm thick felt polishing pad with M14 fitting
- The most common buffing pad for polishing all types of natural stone

**Cat. No. 53FP00125**  
Diameter: 125 mm

For Polishers and Grinders see pages 8 - 11

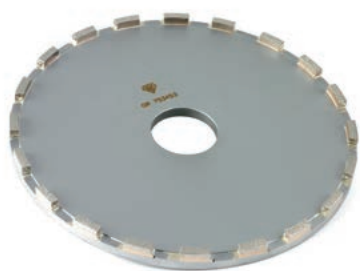


# Edge Polishing Machine Tooling

CRL Stone offers a wide variety of abrasive wheels suitable for all types of edge polishing machines such as Edilux/Omega and Comandulli. All wheels are of the highest quality, and are manufactured by leading tooling suppliers.

# CRL Diamond Wheels for Edge Polishing Machines

---



**CRL Calibration Wheel for Edilux/Omega**

- Diameter: 260 mm

Cat. No. 43PA34011

---



**CRL Drip Cut Blade for Edilux/Omega**

- Diameter: 260 mm

Cat. No. 43PH02072

---



**CRL Cup Wheel for Bullnose Preparation**

- Diameter: 130 mm

Cat. No. 43PA33186

---



**CRL Cup Wheel for Chamfer Preparation**

- Diameter: 155 mm

Cat. No. 43PA32037

---



**CRL Diamond Cup Wheel**

- Diameter: 120 mm

Cat. No. 43PA33158

---

## CRL Backing Plates

---

### CRL Backing Plate

- Diameter: 100 mm

Cat. No. 4402100SBP



### CRL Backing Plate for Edilux/Omega

- Diameter: 130 mm

Cat. No. 4402130BPED  
With Centered Hole

Cat. No. 4402130BPEC  
With Off-Centered Hole



### CRL Backing Plate for Edilux/Omega

- Diameter: 150 mm

Cat. No. 4402150BPED



### CRL Abressa Wheels

- Long-life, medium bond edge polishing wheels
- Quality polish



Abressa Wheels are available in various grits and water hole sizes.  
Contact our stone operations department for more information.



# CRL Adria Wheels

## CRL Comandulli Standard Snail Backed Polishing Wheel



### Diameter: 100 mm

**Cat. No. 440210036AA**  
Grit: 36

**Cat. No. 440210060AA**  
Grit: 60

**Cat. No. 4402100120AA**  
Grit: 120

**Cat. No. 4402100220AA**  
Grit: 220

**Cat. No. 4402100320AA**  
Grit: 320

**Cat. No. 4402100400AA**  
Grit: 400

**Cat. No. 4402100600AA**  
Grit: 600

**Cat. No. 4402100800AA**  
Grit: 800

**Cat. No. 44021001000AA**  
Grit: 1000

**Cat. No. 4402100LUXAA**  
Grit: LUX

### Diameter: 130 mm

**Cat. No. 4402130036AA**  
Grit: 36

**Cat. No. 4402130060AA**  
Grit: 60

**Cat. No. 4402130120AA**  
Grit: 120

**Cat. No. 4402130220AA**  
Grit: 220

**Cat. No. 4402130320AA**  
Grit: 320

**Cat. No. 4402130400AA**  
Grit: 400

**Cat. No. 4402130600AA**  
Grit: 600

**Cat. No. 4402130800AA**  
Grit: 800

**Cat. No. 44021301000AA**  
Grit: 1000

**Cat. No. 4402130LUXAA**  
Grit: LUX

## CRL Comandulli Segmented Snail Backed Polishing Wheel



### Diameter: 130 mm

**Cat. No. 4402130036A**  
Grit: 36

**Cat. No. 4402130060A**  
Grit: 60

**Cat. No. 4402130080A**  
Grit: 80

**Cat. No. 4402130120A**  
Grit: 120

**Cat. No. 4402130220A**  
Grit: 220

**Cat. No. 4402130320A**  
Grit: 320

**Cat. No. 4402130400A**  
Grit: 400

**Cat. No. 4402130600A**  
Grit: 600

**Cat. No. 4402130800A**  
Grit: 800

**Cat. No. 44021301000A**  
Grit: 1000

**Cat. No. 4402130LUXA**  
Grit: LUX

### Diameter: 150 mm

**Cat. No. 4402150036A**  
Grit: 36

**Cat. No. 4402150060A**  
Grit: 60

**Cat. No. 4402150080A**  
Grit: 80

**Cat. No. 4402150120A**  
Grit: 120

**Cat. No. 4402150220A**  
Grit: 220

**Cat. No. 4402150320A**  
Grit: 320

**Cat. No. 4402150400A**  
Grit: 400

**Cat. No. 4402150600A**  
Grit: 600

**Cat. No. 4402150800A**  
Grit: 800

**Cat. No. 44021501000A**  
Grit: 1000

**Cat. No. 4402150LUXA**  
Grit: LUX

## CRL ZIP Diamond Resin Wheels

- Diameter: 130 mm
- High quality diamond resin wheel
- Ideal for use on automatic straight edge polishing machines such as Marmomeccania and Sassomeccania
- Supplied with snail lock fitting



**Cat. No. 410191301**  
Grit: 60, Colour: Green



**Cat. No. 410191302**  
Grit: 120, Colour: Black



**Cat. No. 410191303**  
Grit: 220, Colour: Red



**Cat. No. 410191304**  
Grit: 400, Colour: Yellow



**Cat. No. 410191305**  
Grit: 800, Colour: White



**Cat. No. 410191306**  
Grit: 1800, Colour: Blue



**Cat. No. 410191307**  
Grit: 3500, Colour: Grey

## CRL ZIP Diamond Resin Wheels

- Diameter: 150 mm
- High quality diamond resin wheel
- Ideal for use on automatic straight edge polishing machines such as Marmomeccania and Sassomeccania
- Supplied with snail lock fitting



**Cat. No. 410191501S**  
Grit: 30, Colour: Green



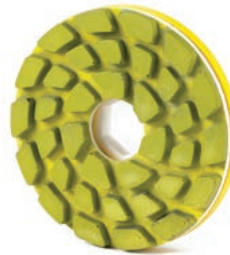
**Cat. No. 410191501**  
Grit: 60, Colour: Green



**Cat. No. 410191502**  
Grit: 120, Colour: Black



**Cat. No. 410191503**  
Grit: 220, Colour: Red



**Cat. No. 410191504**  
Grit: 400, Colour: Yellow



**Cat. No. 410191505**  
Grit: 800, Colour: White



**Cat. No. 410191506**  
Grit: 1800, Colour: Blue



**Cat. No. 410191507**  
Grit: 3500, Colour: Grey



# Diamond Tooling for CNC & Hand Held Machines

CRL Stone and ADI combine to offer an extensive range of tools for CNC and hand-held machines including core and blind drills, routers, pre-cutting wheels and recess drainer wheels.





## CRL Granite Core Drill for Quartz and Granite

- Specifically designed to be used on most angle grinders with M14 spindle
- Easy to cut tap holes on site with little effort
- Useable length: 55 mm
- Wall thickness: 3 mm
- RPM: 2000 - 2500

**Cat. No. 45DRG1125C**  
Diameter: 25 mm

**Cat. No. 45DRG1135C**  
Diameter: 35 mm



## CRL ADI Continuous Rim with Slots for Quartz and Granite

- Supplied with 1/2" GAS fitting
- Useable length: 55 mm
- Wall Thickness: 3 mm
- RPM Min-Max: 4500
- Feed Speed U/min: 30-35

**Cat. No. 45DRG0225C**  
Diameter: 25 mm

**Cat. No. 45DRG0230C**  
Diameter: 30 mm

**Cat. No. 45DRG0235C**  
Diameter: 35 mm

**Cat. No. 45DRG0240C**  
Diameter: 40 mm



## CRL ADI Thin Wall Core Drills for Granite

- Specifically designed thin wall
- Used for cutting faster and helps prevent 'blow outs' in the material
- Length: 55 mm
- Wall thickness: 1 mm

**Cat. No. 45PG08620**  
Diameter: 20 mm  
RPM Min-Max: 3000  
Feed Speed U/min: 30-40

**Cat. No. 45PG08625**  
Diameter: 25 mm  
RPM Min-Max: 2600  
Feed Speed U/min: 30-40

**Cat. No. 45PG08630**  
Diameter: 30 mm  
RPM Min-Max: 2400  
Feed Speed U/min: 40-50

**Cat. No. 45PG08635**  
Diameter: 35 mm  
RPM Min-Max: 2200  
Feed Speed U/min: 50

**Cat. No. 45PG08638**  
Diameter: 38 mm  
RPM Min-Max: 2200  
Feed Speed U/min: 50

**Cat. No. 45PG08640**  
Diameter: 40 mm  
RPM Min-Max: 2200  
Feed Speed U/min: 50



## CRL ADI Thin Wall Core Drill for Ultra Compact Surfaces

- Specially designed thin wall
- Used for cutting faster and helps prevent 'blow outs' in the material
- Wall thickness: 1 mm
- Feed Speed U/min: 15-30
- Other sizes available

**UCS**

**Cat. No. 45MT81130**  
Diameter: 30 mm  
Useable Length: 26 mm  
RPM Min-Max: 2000-2400

**Cat. No. 45MT81135**  
Diameter: 35 mm  
Useable Length: 26 mm  
RPM Min-Max: 1800-2200

**Cat. No. 45MT81140**  
Diameter: 40 mm  
Useable Length: 16 mm  
RPM Min-Max: 1600-2000

**Suitable for ceramic**



## CRL ADI UCS Core Drill for Ultra Compact Surfaces

- Used for cutting faster and helps prevent 'blow outs' in the material
- Feed Speed U/min: 15-30
- 55 mm useable length

**UCS**

**Cat. No. 45MT81230**  
Diameter: 20 mm  
RPM Min-Max: 2200-2600

**Cat. No. 45MT81235**  
Diameter: 35 mm  
RPM Min-Max: 1800-2200

**Cat. No. 45MT81240**  
Diameter: 40 mm  
RPM Min-Max: 1600-2000

**Suitable for ceramic**



## CRL ADI Blind Drills for Ultra Compact Surfaces

- Supplied on 1/2" GAS fitting
- RPM Min-Max: 7000-10000
- Feed Speed U/min: 15-30
- Useable length: 10 mm
- Available by special request

**UCS**

**Cat. No. 45MT82006**  
Diameter: 6 mm

**Cat. No. 45MT82007**  
Diameter: 7 mm

**Cat. No. 45MT82008**  
Diameter: 8 mm

**Cat. No. 45MT82010**  
Diameter: 10 mm

**Cat. No. 45MT82012**  
Diameter: 12 mm

**Suitable for ceramic**



## CRL ADI High Performance Blind Drills for Granite and Marble

- Long life
- Supplied either on 1/2" GAS fitting, parallel shank or M14 fitting - Please confirm the fitting type when ordering
- RPM Min-Max: 7000-10000
- Feed Speed U/min: 20-50
- Parameters are for guidance only
- Coolant water must be used
- Other sizes available

**Cat. No. 45DRG0405C**  
Diameter: 5 mm

**Cat. No. 45DRG0406C**  
Diameter: 6 mm

**Cat. No. 45DRG0407C**  
Diameter: 7 mm

**Cat. No. 45DRG0408C**  
Diameter: 8 mm

**Cat. No. 45DRG0409C**  
Diameter: 9 mm

**Cat. No. 45DRG0410C**  
Diameter: 10 mm

For additional **UCS** tooling see page 49



## CRL ADI 'The Solution Router'

- For use on engineered stone and all types of granite
- RPM Min-Max: 5000-7000
- Feed Speed U/min: 300-700

### Cat. No. 43PB22620

Diameter: 22 mm  
Useable Length: 35 mm

### Cat. No. 43PB22623

Diameter: 24 mm  
Useable Length: 48 mm

Multi-use router



## CRL ADI Magnifica Router

- For use on engineered stone and soft granite
- RPM Min-Max: 5300-6000
- Feed Speed U/min: 250-500

### Cat. No. 43PB22619

Diameter: 22 mm  
Useable Length: 35 mm

### Cat. No. 43PB22624

Diameter: 22 mm  
Useable Length: 48 mm



## CRL ADI Hydro Router

- For use on engineered stone only
- Diameter: 22 mm
- Useable Length: 35 mm
- RPM Min-Max: 5500-7000
- Feed Speed U/min: 300-600

### Cat. No. 43PB22618



## CRL ADI Router for UCS Materials

- For use on ceramic only
- Parameters are for guidance only



### Cat. No. 43MT74022

Diameter: 20 mm  
Useable Length: 15 mm  
RPM Min-Max: 4000-4500  
Feed Speed U/min: 150-250

### Cat. No. 43MT74030

Diameter: 22 mm  
Useable Length: 35 mm  
RPM Min-Max: 4500-4800  
Feed Speed U/min: 250-300

### Cat. No. 47MT74028

Diameter: 22 mm  
Useable Length: 25 mm  
RPM Min-Max: 4000-4500  
Feed Speed U/min: 150-250

### Cat. No. 47MT74031

Diameter: 22 mm  
Useable Length: 35 mm with bottom crown  
RPM Min-Max: 3700-4000  
Feed Speed U/min: 150-250

Figures are for guidance only

Suitable for ceramic

For additional **UCS** tooling see page 49



## CRL ADI Router for Marble

- Electroplated
- RPM Min-Max: 5500
- Feed Speed U/min: 400-600
- NOTE: RPM and Feed Speeds are for guidance purposes only

**Cat. No. 43R0M3516C**  
Dimension: 35 mm x 16 mm

**Cat. No. 43R0M4516CVB**  
Dimension: 45 mm x 16 mm



43R0G1220M12



43R0G2012C



43R0G1220C

## CRL ADI Milling Crown for Granite

**Cat. No. 43R0G1220M12**  
M12 Fit

**Cat. No. 43R0G2012C**  
1/2" GAS

**Cat. No. 43R0G1220C**  
M8 Fit



## CRL Super Tip Granite, Marble and Tile Drill Bit

- Designed for hammer or rotary drills only

**Cat. No. SDB18**  
Hole Size: 3 mm  
Length: 76.2 mm

**Cat. No. SDB316**  
Hole Size: 4.7 mm  
Length: 76.2 mm

**Cat. No. SDB14**  
Hole Size: 6 mm  
Length: 102 mm

**Cat. No. SDB38**  
Hole Size: 10 mm  
Length: 127 mm



## CRL Tungsten Carbide Twist Drill with Parallel Shank Fit

- For all materials
- For use with standard Jacob's Chuck drill
- Masonry type drill
- Suitable for all materials

**Cat. No. 45010003**  
Diameter: 3 mm

**Cat. No. 45010004**  
Diameter: 4 mm

**Cat. No. 45010005**  
Diameter: 5 mm

**Cat. No. 45010006**  
Diameter: 6 mm

**Cat. No. 45010007**  
Diameter: 7 mm

**Cat. No. 45010008**  
Diameter: 8 mm

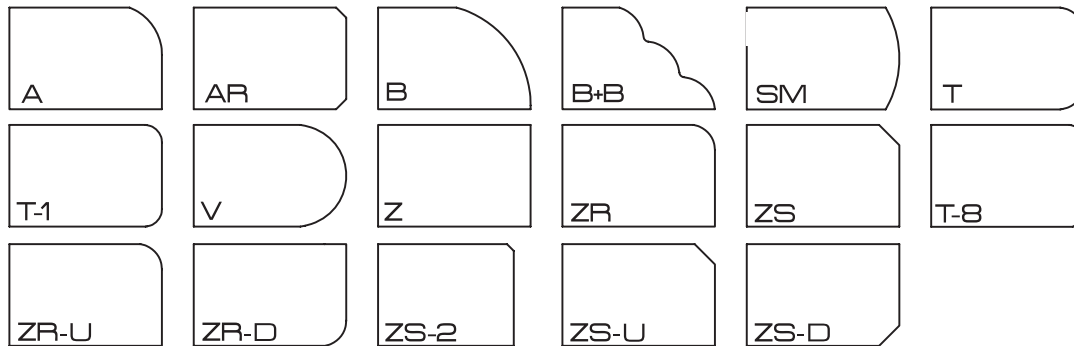
**Cat. No. 45010009**  
Diameter: 9 mm

**Cat. No. 45010010**  
Diameter: 10 mm

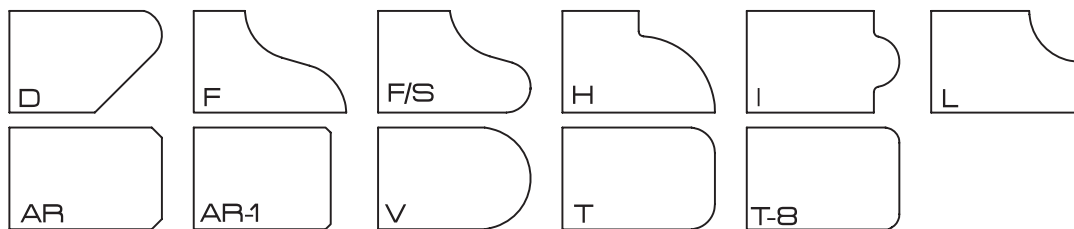


## CRL Edge Profiles

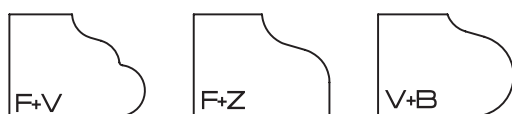
The guide below shows the most popular profiles that can be created.



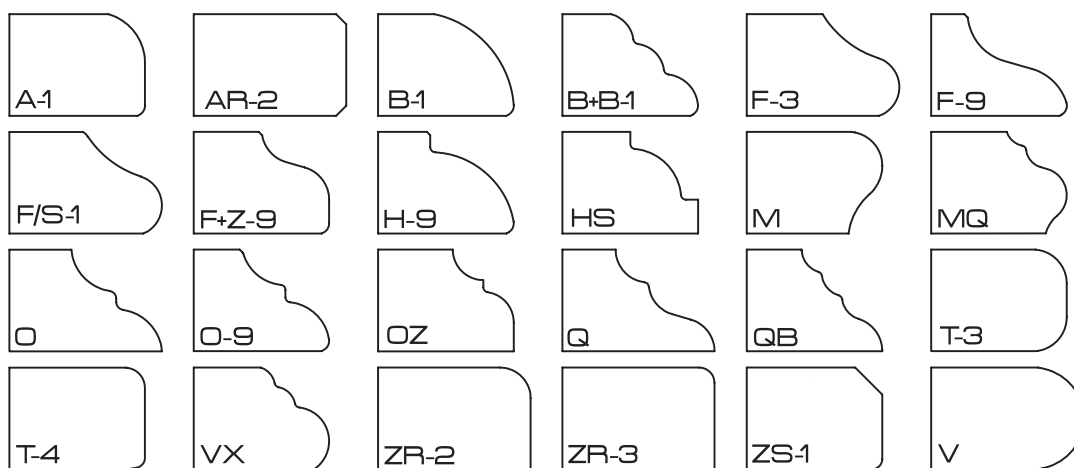
Suitable for 20 mm, 30 mm,  
and 40 mm thick material



Suitable for 20 mm and  
30 mm thick material



Suitable for 30 mm and 40  
mm thick material



Suitable for 30 mm  
thick material



Suitable for  
10 mm, 20 mm,  
and 30 mm thick  
material



Suitable for  
20 mm, 30 mm,  
and 40 mm thick  
material

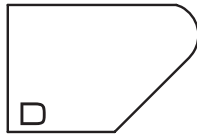


Suitable for  
40 mm thick  
material

Over 500 combinations available. Contact our stone operations department for more information.

## CRL Most Popular Edge Profiles

### CRL ADI D30 Sharks Nose



**Cat. No. 43PB122702**  
Position 1 Segmented rim

**Cat. No. 43PB122703**  
Position 2 Continuous rim

**Cat. No. 43PB122704**  
Position 3 Continuous rim

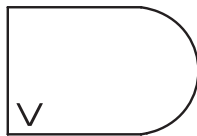
**Cat. No. 43PB122705**  
Position 4 Continuous rim

**Cat. No. 43PB01522**  
Position 5 MFP5

**Cat. No. 44PB02056**  
Position 6 Express polish

**Cat. No. 44PB02057**  
Position 7 Express polish

### CRL ADI V30 Bull Nose



**Cat. No. 43PB122602**  
Position 1 Segmented rim

**Cat. No. 43PB122603**  
Position 2 Continuous rim

**Cat. No. 43PB122604**  
Position 3 Continuous rim

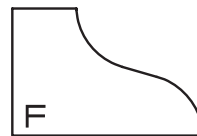
**Cat. No. 43PB122638**  
Position 4 Continuous rim

**Cat. No. 43PB01562**  
Position 5 MFP5

**Cat. No. 44PB02176**  
Position 6 Express polish

**Cat. No. 44PB02177**  
Position 7 Express polish

### CRL ADI F30 Ogee



**Cat. No. 43PB122605**  
Position 1 Segmented rim

**Cat. No. 43PB122606**  
Position 2 Continuous rim

**Cat. No. 43PB122607**  
Position 3 Continuous rim

**Cat. No. 43PB122647**  
Position 4 Continuous rim

**Cat. No. 43PB01524**  
Position 5 MFP5

**Cat. No. 44PB02062**  
Position 6 Express polish

**Cat. No. 44PB02063**  
Position 7 Express polish

### CRL ADI Z40 Flat Edge



**Cat. No. 43PB122598**  
Position 1 Segmented rim

**Cat. No. 43PB122599**  
Position 2 Continuous rim

**Cat. No. 43PB122600**  
Position 3 Continuous rim

**Cat. No. 43PB122635**  
Position 4 Continuous rim

**Cat. No. 43PB01506**  
Position 5 MFP5

**Cat. No. 44PB02441**  
Position 6 Express polish

**Cat. No. 44PB02442**  
Position 7 Express polish

Contact our stone operations department for more information.

## CRL Most Popular Edge Profile

### CRL ADI T30 Top/Bottom Radius



**Cat. No. 43PB122614**  
Position 1 Segmented rim

**Cat. No. 43PB122615**  
Position 2 Continuous rim

**Cat. No. 43PB122616**  
Position 3 Continuous rim

**Cat. No. 43PB122648**  
Position 4 Continuous rim

**Cat. No. 43PB01556**  
Position 5 MFP5

**Cat. No. 44PB02155**  
Position 6 Express polish

**Cat. No. 44PB02156**  
Position 7 Express polish

### CRL ADI AR30 Top/Bottom Chamfer



**Cat. No. 43PB122571**  
Position 1 Segmented rim

**Cat. No. 43PB122572**  
Position 2 Continuous rim

**Cat. No. 43PB122573**  
Position 3 Continuous rim

**Cat. No. 43PB122642**  
Position 4 Continuous rim

**Cat. No. 43PB01508**  
Position 5 MFP5

**Cat. No. 44PB02017**  
Position 6 Express polish

**Cat. No. 44PB02018**  
Position 7 Express polish

### CRL ADI ZS30 Top Chamfer



**Cat. No. 43PB161241**  
Position 1 Segmented rim

**Cat. No. 43PB161242**  
Position 2 Continuous rim

**Cat. No. 43PB161243**  
Position 3 Continuous rim

**Cat. No. 43PB161244**  
Position 4 Continuous rim

**Cat. No. 43PB11518**  
Position 5 MFP5

**Cat. No. 44PB02677**  
Position 6 Express polish

**Cat. No. 44PB02678**  
Position 7 Express polish

### CRL ADI ZR30 Top Radius



**Cat. No. 43PB122623**  
Position 1 Segmented rim

**Cat. No. 43PB122624**  
Position 2 Continuous rim

**Cat. No. 43PB122625**  
Position 3 Continuous rim

**Cat. No. 43PB122646**  
Position 4 Continuous rim

**Cat. No. 43PB01568**  
Position 5 MFP5

**Cat. No. 44PB02203**  
Position 6 Express polish

**Cat. No. 44PB02204**  
Position 7 Express polish



## CRL ADI Profile X Pre-Cutting Wheel

Cat. No. 43PB12268

- Used to create the very basic profile before using your position 1 diamond wheel
- Preserves the life of your diamond tools
- Maintains the quality of the polishing tools at the end of the sequence
- For use on granite or quartz
- For use with CNC machines only
- Diameter: 130 mm
- Bore: 35 mm, Suitable for surfaces of 20, 30 and 40 mm thickness
- RPM Min-Max: 4500
- Feed Speed U/min: 800-1000



## CRL ADI 'Y' Profile Pre-Cutting Wheel for Granite or Quartz

Cat. No. 43PB122640

- Used to create the very basic profile before using your position 1 diamond wheel
- Preserves the life of your diamond tools
- Maintains the quality of the polishing tools at the end of the sequence
- For use on granite or quartz
- For use with CNC machines only
- Diameter: 120 mm
- Bore: 35 mm, Suitable for surfaces of 20, 30 and 40 mm thickness
- RPM Min-Max: 4500
- Feed Speed U/min: 800-1000



## CRL ADI 'Tilt Wheels' for Producing Built Up Edges - Interlocking Profiles - Ultra High Speed

Cat. No. 43PB123334

Position 1 (Profile A)  
Diameter: 120 mm  
Bore: 35 mm, suitable for surfaces of 20 mm thickness

Cat. No. 43PB123335

Position 1 (Profile B)  
Diameter: 120 mm  
Bore: 35 mm, suitable for surfaces of 20 mm thickness

Cat. No. 43PB123332

Position 1 (Profile A)  
Diameter: 130 mm  
Bore: 35 mm, suitable for surfaces of 30 mm thickness

Cat. No. 43PB123333

Position 1 (Profile B)  
Diameter: 130 mm  
Bore: 35 mm, suitable for surfaces of 30 mm thickness

- Allows a CNC machine to create the 45 degree mitre needed for built up edges that would normally have to be done on a bridge saw

The main benefits of using these tools instead of the bridge saw are as follows:

**Accuracy** - The CNC will cut straight and accurately, unlike a bridge saw which can sometimes run offcourse due to the blades' natural flex.

**Less Chipping** - Bridge saw blades tend to chip the material, especially some granites. These tools will give a much better finish with very little chipping which means only a very small chamfer is required when the pieces have been assembled. Bigger chamfers that are often needed following a bridge saw cut will expose the joint line, therefore creating a less professional finish.

- Stock removal: to shape
- RPM Min-Max: 4500-5500
- Feed Speed U/min: 800-1200

PROFILE A

PROFILE B

RPM and Feed Speeds are for guidance purposes only.



## CRL Recess Drainer Wheels

### CRL ADI Super Duty Milling Wheel for Engineered Stone and Granite (Ultra High Speed)



43PB29443



43PB29536

43PB29501

43PB29470

#### Cat. No. 43PB29443

Dimension: 91 mm diameter x 30 mm thickness x 7 mm depth  
(Standard connection for engineered stone, granite and marble)  
RPM Min-Max: 4500  
Feed Speed U/min: 400-800  
Stock Removal: 10 MAX

#### Cat. No. 43PB29536

Dimension: 150 mm diameter x 27 mm thickness x 7 mm depth  
(Standard connection for engineered stone and granite)  
RPM Min-Max: 4000  
Feed Speed U/min: 200-400  
Stock Removal: 5 MAX

#### Cat. No. 43PB29501

Dimension: 91 mm diameter x 31 mm thickness x 7 mm depth  
(Standard connection for engineered stone and granite)  
RPM Min-Max: 4500  
Feed Speed U/min: 400 - 600  
Stock Removal: 5 MIN - 10 MAX

#### Cat. No. 43PB29470

Dimension: 54 mm diameter x 25 mm thickness x 7 mm depth  
(14 mm connection for engineered stone and granite)  
RPM Min-Max: 5000  
Feed Speed U/min: 400  
Stock Removal: 5 MIN - 10 MAX

The UK'S most popular Milling wheel

### CRL ADI Milling Wheel



43PB29035

43PB29036

#### Cat. No. 43PB29035

Dimension: 91 mm diameter x 30 mm thickness x 7 mm depth  
Colour: Red for harder materials  
RPM Min-Max: 4500-4800  
Feed Speed U/min: 400-700  
Stock Removal: 1-10 MAX

#### Cat. No. 43PB29036

Dimension: 91 mm diameter x 30 mm thickness x 7 mm depth  
Colour: Blue for medium materials  
RPM Min-Max: 4000  
Feed Speed U/min: 200-400  
Stock Removal: 5 MAX

### CRL ADI Recess Drainer Chamfer Wheels

- For use on engineered stone and granite
- Diameter: 104 mm
- Bore: 35 mm
- Parameters are for guidance purposes only



#### Cat. No. 43PB29449

Position 1 Metal Bond

#### Cat. No. 43PB29450

Position 2 Metal Bond

## CRL ADI Recess Drainer Wheels for Granite with Built In 60° Contour

- Designed to shape and polish the face of a recessed worktop after the stubbing wheel has removed the stock
- RPM Min-Max: 4500
- Feed Speed U/min: 400-800
- Stock Removal: 10 MAX
- RPM Min-Max: 4500
- Feed Speed U/min: 400-800
- Stock Removal: 10 MAX



**Step 1**  
Heavy-Duty Milling Wheel  
**Cat. No. 43PB29443**  
Dimension: 91 mm diameter x  
30 mm thickness x 7 mm depth



**Step 2**  
Metal Bond  
**Cat. No. 43PB29449**  
Dimension: 104 mm diameter x  
12 mm thickness x 5 mm depth



**Step 3**  
Metal Bond  
**Cat. No. 43PB29450**  
Dimension: 104 mm diameter x  
12 mm thickness x 5 mm depth



**Step 4**  
Polish  
**Cat. No. 44PB39021**  
Grit: 325  
Dimension: 114 mm diameter x  
27 mm thickness x 5 mm depth



**Step 5**  
Polish  
**Cat. No. 44PB39007**  
Grit: 600  
Dimension: 114 mm diameter x  
27 mm thickness x 5 mm depth



**Step 6**  
Polish  
**Cat. No. 44PB39026**  
Grit: 800  
Dimension: 114 mm diameter x  
27 mm thickness x 5 mm depth



**Step 7**  
Polish  
**Cat. No. 44PB39042**  
Grit: 1500  
Dimension: 114 mm diameter x  
27 mm thickness x 5 mm depth



**Step 8**  
Polish  
**Cat. No. 44PB39020**  
Grit: 3000  
Dimension: 114 mm diameter x  
27 mm thickness x 5 mm depth



**Step 9**  
Flat Polish  
**Cat. No. 44PB29129**  
Grit: LUX  
Dimension: 100 mm diameter x  
20 mm thickness x 12 mm depth

## CRL ADI Recess Drainer Wheels for Engineered Stone with Built In 60° Contour\*

- Designed to shape and polish the face of a recessed worktop after the stubbing wheel has removed the stock
- RPM Min-Max: 4500
- Feed Speed U/min: 400-800
- Stock Removal: 10 MAX
- Built in 60° contour for steps 9, 10 and 11 only. Other wheels are flat polish



**Step 1**  
Heavy-Duty Milling Wheel

**Cat. No. 43PB29443**  
Dimension: 91 mm diameter x 30 mm thickness x 7 mm depth  
(Standard connection for engineered stone, granite and marble)



**Step 2**  
Metal Bond

**Cat. No. 43PB29449**  
Dimension: 104 mm diameter x 12 mm thickness x 5 mm depth



**Step 3**  
Metal Bond

**Cat. No. 43PB29450**  
Dimension: 104 mm diameter x 12 mm thickness x 5 mm depth



**Step 4**  
Position 1  
Flat Polish

**Cat. No. 44PB29336**  
Grit: 200  
Dimension: 100 mm diameter x 40 mm thickness x 12 mm depth



**Step 5**  
Position 2  
Flat Polish

**Cat. No. 44PB29337**  
Grit: 500  
Dimension: 100 mm diameter x 40 mm thickness x 12 mm depth



**Step 6**  
Position 3  
Flat Polish

**Cat. No. 44PB29338**  
Grit: 1000  
Dimension: 100 mm diameter x 40 mm thickness x 12 mm depth



**Step 7**  
Position 4  
Flat Polish

**Cat. No. 44PB29339**  
Grit: 2000  
Dimension: 114 mm diameter x 27 mm thickness x 5 mm depth



**Step 8**  
Position 5  
Flat Polish

**Cat. No. 44PB29340**  
Grit: 3000  
Dimension: 100 mm diameter x 40 mm thickness x 12 mm depth



**Step 9**  
Chamfer Polish

**Cat. No. 44PB29545**  
Grit: 500  
Dimension: 110 mm diameter with 60° chamfer



**Step 10**  
Chamfer Polish

**Cat. No. 44PB29546**  
Grit: 1000  
Dimension: 110 mm diameter with 60° chamfer



**Step 11**  
Chamfer Polish

**Cat. No. 44PB29547**  
Grit: 2000  
Dimension: 110 mm diameter with 60° chamfer

# CRL ADI Drainer Grooving Wheel and Tools

## CRL ADI Drainer Grooving Wheels for 'C' Axis for Granite

- Dimension: 140 mm x 12 mm (8 mm radius x 30 mm bore)

### Cat. No. 43PA27488

Position 1 - diamond  
RPM Min-Max: 4000  
Feed Speed U/min: 1000  
Stock Removal: 3 mm

### Cat. No. 44PA27489

Position 2 - brown resin  
RPM Min-Max: 3000  
Feed Speed U/min: 600  
Stock Removal: 0.05 - 0.1 mm

### Cat. No. 44PA27490

Position 3 - white resin  
RPM Min-Max: 3000  
Feed Speed U/min: 600  
Stock Removal: 0.05 - 0.1 mm



43PA27488



43PA27489



44PA27490

## CRL ADI Drainer Grooving Wheels for 'C' Axis for Marble

- Dimension: 140 mm x 12 mm (8 mm radius x 30 mm bore)

### Cat. No. 43PA27571

Position 1 - diamond  
RPM Min-Max: 4000  
Feed Speed U/min: 1000  
Stock Removal: 3 mm

### Cat. No. 44PB38204

Position 2 - polish  
RPM Min-Max: 3500  
Feed Speed U/min: 800  
Stock Removal: 0.05 - 0.1 mm

### Cat. No. 44PB31903

Position 3 - rubber polish  
RPM Min-Max: 2700  
Feed Speed U/min: 800  
Stock Removal: 0.05 - 0.1 mm



43PA27571



44PB38204



44PB31903

## CRL Drainer Grooving Tool for Granite and Quartz

- For use with CNC machines
- 1/2" GAS thread
- Parameters are for guidance purposes only



### For 12 mm grooves

#### Cat. No. 43R0GST12C

Position 1

#### Cat. No. 43R0GST12M

Position 2

#### Cat. No. 43R0GST12F

Position 3

#### Cat. No. 43R0GST12FF

Position 4

### For 16 mm grooves

#### Cat. No. 43R0GST16C

Position 1

#### Cat. No. 43R0GST16M

Position 2

#### Cat. No. 43R0GST16F

Position 3

#### Cat. No. 43R0GST16FF

Position 4

### For 20 mm grooves

#### Cat. No. 43R0GST20C

Position 1

#### Cat. No. 43R0GST20M

Position 2

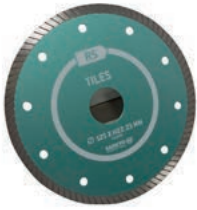
#### Cat. No. 43R0GST20F

Position 3

#### Cat. No. 43R0GST20FF

Position 4





## CRL Sankyo Blade for Porcelain and Ceramic

- 1 mm thick blade
- Diameter: 125 mm

Cat. No. 51020RS5

**UCS**



47MTJ64001 / 2 / 3



47MT64006 / 7 / 8

## CRL ADI Diamond Saw Blade for Ceralsio and Other Ultra Compact Surfaces

- Bore Hole: 60 mm

### Cat. No. 47MTJ64001

Diameter: 350 mm  
Feed: 500-1500 mm/min

### Cat. No. 47MTJ64002

Diameter: 400 mm  
Feed: 500-1500 mm/min

### Cat. No. 47MTJ64003

Diameter: 450 mm  
Bore Hole: 60 mm  
Feed: 500-1500 mm/min

### Cat. No. 47MTJ64006

Diameter: 350 mm  
Feed: 1200-2000 mm/min

### Cat. No. 47MTJ64007

Diameter: 400 mm  
Feed: 1200-2000 mm/min

### Cat. No. 47MTJ64008

Diameter: 450 mm  
Feed: 1200-2000 mm/min

**UCS**



## CRL ADI Thin Wall Core Drill for Ultra Compact Surfaces

- Specially designed thin wall
- Used for cutting faster and helps prevent 'blow outs' in the material
- Wall thickness: 1 mm
- Feed Speed U/min: 15-30
- Other sizes available

### Cat. No. 45MT81132

Diameter: 32 mm  
Useable Length: 26 mm  
RPM Min-Max: 2000-2400

### Cat. No. 45MT81135

Diameter: 35 mm  
Useable Length: 26 mm  
RPM Min-Max: 1800-2200

### Cat. No. 45MT81140

Diameter: 40 mm  
Useable Length: 16 mm  
RPM Min-Max: 1600-2000

**UCS**



## CRL ADI Blind Drills for Ultra Compact Surfaces

- Supplied on 1/2" GAS fitting
- RPM Min-Max: 7000-10000
- Feed Speed U/min: 15-30
- Useable length: 10 mm

### Cat. No. 45MT82006

Diameter: 6 mm

### Cat. No. 45MT82007

Diameter: 7 mm

### Cat. No. 45MT82008

Diameter: 8 mm

### Cat. No. 45MT82010

Diameter: 10 mm

### Cat. No. 45MT82012

Diameter: 12 mm

**UCS**



## CRL ADI Router for UCS Materials

- For use on ceramic only
- Parameters are for guidance only

### Cat. No. 43MT74022

Diameter: 20 mm  
Useable Length: 15 mm  
RPM Min-Max: 4000-4500  
Feed Speed U/min: 150-250

### Cat. No. 43MT74030

Diameter: 22 mm  
Useable Length: 35 mm  
RPM Min-Max: 4500-4800  
Feed Speed U/min: 250-300

### Cat. No. 47MT74028

Diameter: 22 mm  
Useable Length: 25 mm  
RPM Min-Max: 4000-4500  
Feed Speed U/min: 150-250

### Cat. No. 47MT74031

Diameter: 22 mm  
Useable Length: 35 mm with bottom crown  
RPM Min-Max: 3700-4000  
Feed Speed U/min: 150-250

**UCS**

Contact our stone operations department for more information.

# CRL are approved distributors for IMS and Blick Industries

Contact our stone operations department for more  
information on tool holders and suction cups.



P7260912



501225012



50122001090



P7260929



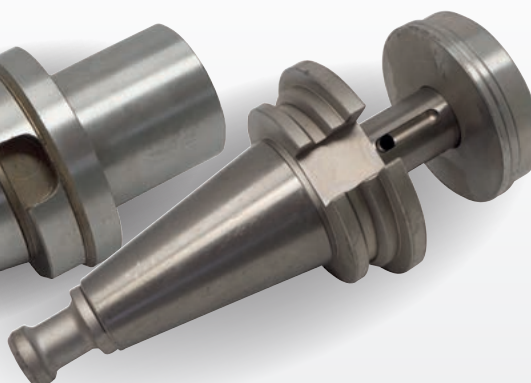
501207010



43005



43B002



43SL01124



Ceralsio  
CERAMIC SURFACES

CRL | STONE



Ceralsio Ceramic Surfaces floor tiling and wall cladding available to match the kitchen worktop and bathroom countertop

See page 118

# Adhesives & Fillers

CRL Stone offers a broad selection of professional adhesives, fillers, cleaners and stone treatment products.

(When using colour products we recommend testing first)

**NEW!**

Super fast drying

High bonding power

See page 53 for full details





## CRL AKEMI® Platinum, Transparent

- Knife-grade or liquid super fast drying adhesive
- High bonding power
- Used for bonding and filling of all natural and artificial stones with vertical applications
- Content: 900 ml can
- AKEMI® Hardener for Poly and Acrylic Adhesives included

NOTE: AKEMI® Spectrum pastes also available - see below



Included

NEW!

**Cat. No. 4810725**  
Knife-Grade

**Cat. No. 4810726**  
Liquid

## Suitable for ceramic

## CRL AKEMI® Spectrum Paste

Content: 45 g tube



NEW!

### Cat. No. 4811537

To match with CRL Quartz Colorado, Monte Bianco, Montana Gris, Regency White, River White, Verona, Atlantic Gris and Calacatta

### Cat. No. 4811547

To match with CRL Quartz Savannah

### Cat. No. 4811529

To match with CRL Quartz Gold Noir and Midnight

### Cat. No. 4811533

To match with CRL Quartz Chalk, Clear White, Polar White, Pura White, Statuario Bianco, Ultra White and White Water

### Cat. No. 4811542

To match with CRL Quartz Arctic Shimmer, Carrara, Ice, Quartz Reflection, White Carrara and Antonella

### Cat. No. 4811544

To match with CRL Quartz Vicenza

### Cat. No. 4811545

To match with CRL Quartz Knightsbridge

### Cat. No. 4811546

To match with CRL Quartz Antico

### Cat. No. 4811549

To match with CRL Quartz Ivory River and Kalahari

### Cat. No. 4811559

To match with CRL Quartz Grey Reflection

### Cat. No. 4811561

To match with CRL Quartz Concrete Gris Honed

### Cat. No. 4811559

To match with CRL Quartz Grey Mist and Grey Shimmer

### Cat. No. 4811562

To match with CRL Quartz Mystic Grey, Sahara, Soft Concrete, Pearl Grey and Silver Shimmer

### Cat. No. 4811563

To match with CRL Quartz Windsor Grey

### Cat. No. 4811568

To match with CRL Quartz Gallant Grey

### Cat. No. 4811569

To match with CRL Quartz Soft Truffle

### Cat. No. 4811570

To match with CRL Quartz Forest

### Cat. No. 4811577

To match with CRL Quartz Chestnut



## CRL AKEMI® Colour Bond

- High bonding power
- Fast drying
- 50+ colours available (some may be subject to special order- please ask for details)
- Use alongside COMPOSIL silicone sealant for best results on all installations - see page 69
- Content: 250 ml cartridge

## Cat. No. 4846111

To match with CRL Quartz Colorado, Monte Bianco, Montana Gris, Regency White, River White, Verona and Calacatta

## Cat. No. 4846112

To match with CRL Quartz Atlantic Gris

## Cat. No. 4846121

To match with CRL Quartz Savannah

## Cat. No. 4847001

To match with CRL Quartz Gold Noir and Midnight

## Cat. No. 4847011

To match with CRL Quartz Chalk

## Cat. No. 4847014

To match with CRL Quartz Clear White, Polar White, Pura White, Statuario Bianco, Ultra White and White Water

## Cat. No. 4847063

To match with CRL Quartz Arctic Shimmer, Carrara, Ice, Quartz Reflection, White Carrara and Antonella

## Cat. No. 4847066

To match with CRL Quartz Vicenza

## Cat. No. 4847067

To match with CRL Quartz Knightsbridge

## Cat. No. 4847068

To match with CRL Quartz Antico

## Cat. No. 4847074

To match with CRL Quartz Ivory River and Kalahari

## Cat. No. 4847082

To match with CRL Quartz Grey Reflection and Grey Shimmer

## Cat. No. 4847084

To match with CRL Quartz Concrete Gris Honed

## Cat. No. 4847085

To match with CRL Quartz Grey Mist, Mystic Grey, Sahara, Soft Concrete, Pearl Grey and Silver Shimmer

## Cat. No. 4847086

To match with CRL Quartz Windsor Grey

## Cat. No. 4847091

To match with CRL Quartz Gallant Grey

## Cat. No. 4847093

To match with CRL Quartz Soft Truffle

## Cat. No. 4847095

To match with CRL Quartz Forest

## Cat. No. 4847106

To match with CRL Quartz Chestnut

## CRL AKEMI® Gun for Colourbond

Cat. No. 4814029



## CRL Nozzles for Colourbond

Cat. No. 4810552



## CRL Polyester Based (Knife Grade) Adhesives

### CRL Solido

- Polyester adhesive with a knife grade consistency
- Can be applied to a variety of surfaces in either vertical or horizontal position
- Suitable when filling all stone work surfaces
- Content: 1 L can
- Tenax hardener included

**Cat. No. 48SOLID003**  
Colour: Straw

**Cat. No. 48SOLID004**  
Colour: Clear

**Cat. No. 48SOLID011**  
Colour: Black

**Cat. No. 48SOLID012**  
Colour: White



Included

Colours can be combined for bulk pricing

### CRL Solido Quarzo

- For use on all quartz engineered stone
- Content: 1 L can
- Tenax hardener included

NOTE: Other colours available on request (subject to our special order terms and conditions).



Included

**Cat. No. CSQ10024**  
Colour: Ivory White

**Cat. No. CSQ10026**  
Colour: Optical White

**Cat. No. CSQ10027**  
Colour: Paper White

**Cat. No. CSQ10029**  
Colour: White

**Cat. No. CSQ10174**  
Colour: Sand

**Cat. No. CSQ10623**  
Colour: Grit

**Cat. No. CSQ10139**  
Colour: Crema Dark

**Cat. No. CSQ10148**  
Colour: Ecru

**Cat. No. CSQ10177**  
Colour: Shell

**Cat. No. CSQ10601**  
Colour: Anthracite

**Cat. No. CSQ10607**  
Colour: City Grey

**Cat. No. CSQ10701**  
Colour: Black Bahia

**Cat. No. CSQ11108**  
Colour: Bark

**Cat. No. CSQ10624**  
Colour: Humus

**Cat. No. CSQ10630**  
Colour: Underground

**Cat. No. CSQ10645**  
Colour: Warm Grey

**Cat. No. CSQ10702**  
Colour: Black

**Cat. No. CSQ10632**  
Colour: Winter Sky

Suitable for all quartz

Contact our stone operations department for a colour match on your quartz/engineered stone.



Included

## CRL AKEMI® Marmorkitt 1000 Transparent

- Liquid, honey coloured stone adhesive
- Used for bonding natural stone slabs
- Reinforces natural stone slabs with glass-fibre products (laminating)
- Can be used to make stone substitutes using crushed rock and sand
- AKEMI® Hardener for Poly and Acrylic Adhesives included

**Cat. No. 4810709**  
Content: 150 ml can

**Cat. No. 4810701**  
Content: 900 ml can

**Cat. No. 4810703**  
Content: 4500 ml bucket



Included

## CRL AKEMI® Marmorkitt 1000 Transparent, Extra-Liquid

- Water clear stone adhesive of particularly low viscosity
- Used for gluing metal letters as a primer for the treatment of porous and sandy marble and limestone
- To be sealed afterwards with marble fillers
- Content: 900 ml can
- AKEMI® Hardener for Poly and Acrylic Adhesives included

**Cat. No. 4810718**



Included

## CRL AKEMI® Marmorkitt 1000 Transparent, Water Clear

- Liquid, crystal clear stone adhesive
- Resists discolouration
- Used for bonding and filling lightcoloured and white, transparent-crystalline natural stone such as Thassos, Carrara, Onyx, Palisandro and Estremoz
- Content: 900 ml can
- Hardener B Liquid included

**Cat. No. 4810720**



Included

## CRL AKEMI® Champagne Coloured, Marmorkitt Super

- Low viscosity stone adhesive and filler on an acrylic basis
- Used for filling fissures and the coarse-pored surfaces of light-coloured marble and travertine in an horizontal position
- Suitable as an injection resin
- Very fast surface drying
- Content: 900 ml can
- AKEMI® Hardener for Poly and Acrylic Adhesives included

**Cat. No. 4810714**



Included

## CRL AKEMI® Marmorkitt 1000 Universal

- Stone filler of creamy consistency with filling agents, capable of flowing
- Used for filling small holes and fissures
- Also used for bonding natural stone in a horizontal position
- AKEMI® Hardener for Poly and Acrylic Adhesives included
- Minimum order: 6 each

**Cat. No. 4810102**  
Colour: Jura yellow  
Content: 150 ml can

**Cat. No. 4810120**  
Colour: Jura yellow  
Content: 1 Litre can

**Cat. No. 4810104**  
Colour: Ivory  
Content: 1 Litre can

**Cat. No. 4810108**  
Colour: White  
Content: 1 Litre can

**Cat. No. 4810107**  
Colour: Black  
Content: 1 Litre can





Included

## CRL AKEMI® Marmorkitt 1000 Transparent L-Special, Water Clear

Cat. 4810722

- Honey coloured, gel-like, knife grade filler
- Resists discolouration
- Used for bonding and filling light-coloured and white, transparent-crystalline natural stone such as Thassos, Carrara, Onyx, Palisandro and Estremoz in a vertical position
- Also used for modelling corners and edges
- Content: 900 ml can
- Hardener B Liquid included



Included

## CRL AKEMI® Marmorkitt 1000 Transparent L-Special

Cat. No. 4810712  
Content: 150 ml can

Cat. No. 4810710  
Content: 900 ml can

- Honey coloured, gel-like knife grade filler
- Used for bonding and filling natural stone in a vertical position
- AKEMI® Hardener for Poly and Acrylic Adhesives included



Included

## CRL AKEMI® Marmorkitt 1000S

- A stiff, paste-like stone filler
- Used for the bonding and filling of natural stone in a vertical position
- Also used for modelling corners and edges and filling large holes
- Content: 1 Litre can
- AKEMI® Hardener for Poly and Acrylic Adhesives included

Cat. No. 4810507  
Colour: Jura-light

Cat. No. 4810506  
Colour: Grey/Neutral

Cat. No. 4810512  
Colour: White

Cat. No. 4810515  
Colour: Black

Cat. No. 4810503  
Colour: Olive (T)



Included

## CRL AKEMI® Platinum, Transparent

- Knife-grade or liquid super fast drying adhesive
- High bonding power
- Used for bonding and filling of all natural and artificial stones with vertical applications
- Content: 900 ml can
- AKEMI® Hardener for Poly and Acrylic Adhesives included

NOTE: AKEMI® Spectrum pastes also available - see page 53



Cat. No. 4810725  
Knife-Grade

Cat. No. 4810726  
Liquid

Suitable for ceramic



## CRL AKEMI® Hardener for Poly and Acrylic Adhesives

- Works with Poly and Acrylic Adhesives

Cat. No. 4830406  
Content: 30 g tube

Cat. No. 4830407  
Content: 60 g tube



## CRL Hardener B Liquid

Cat. No. 4830423

- The liquid hardener is suitable for water clear marble filler products such as 4810720 and 4810722 - see previous page and above
- Used like an eye drop into the adhesive
- Content: 30 g bottle

## CRL AKEMI® Colouring Paste for Marble Filler 1000 and Marble Filler Super

- Special concentrated colouring paste used with Marble Filler 1000 and Marble Filler Super (polyester based) resin
- Matches the marble filler to that of the respective stone
- Content: 30 ml tube



**Cat. No. 4811001**  
Colour: Red

**Cat. No. 4811002**  
Colour: Red-brown

**Cat. No. 4811003**  
Colour: White

**Cat. No. 4811004**  
Colour: Black

**Cat. No. 4811005**  
Colour: Ochre

**Cat. No. 4811006**  
Colour: Green

**Cat. No. 4811011**  
Colour: Brown

**Cat. No. 4811012**  
Colour: Blue

**Cat. No. 4811007**  
Colour: Set of 8 assorted colours as shown above

## CRL AKEMI® Colouring Paste for AKEPOX Adhesives

- Special concentrated colouring paste used only for colouring AKEPOX (Epoxy) adhesives
- Matches the marble filler to that of the respective stone
- Not suitable for polyester and acrylic adhesion
- Content: 30 ml tube



**Cat. No. 4811220**  
Colour: Red

**Cat. No. 4811221A**  
Colour: Brown

**Cat. No. 4811228A**  
Colour: Red-brown

**Cat. No. 4811222A**  
Colour: White

**Cat. No. 4811223A**  
Colour: Black

**Cat. No. 4811224**  
Colour: Ochre

**Cat. No. 4811225**  
Colour: Green

**Cat. No. 4811227**  
Colour: Blue

**Cat. No. 4811226**  
Colour: Set of 8 assorted colours as shown above



## CRL AKEMI® Stone and Marble Adhesive - MS76 Knife Grade or Still Flowing

- Used for bonding natural and artificial stone to one another and to metal, wood and various plastics
- Very good adhesion to metal
- Two component adhesive
- Content: 1.5 kg can

**Cat. No. 4810915**  
Knife Grade  
Colour: Light Grey

**Cat. No. 4810917**  
Knife Grade  
Colour: Black

**Cat. No. 4810919**  
Knife Grade  
Colour: White

**Cat. No. 4810903**  
Still Flowing  
Colour: Light Grey

## CRL AKEMI® Stone Strengthening Liquid AKEPOX



## CRL AKEMI® AKEPOX 1005

**Cat. No. 4810676**

- Very low viscosity, two component filler
- Hardening time 24 hours (20 °C approx)
- Only a slight tendency to discolour
- Easy to colour
- Very high penetration into fine and deep cracks
- Fills small holes and finishes the surface of the stone at the same time
- Colour: Transparent
- Content: 1.25 kg unit

## CRL AKEMI® Stone Strengthener K

**Cat. No. 4811320**



- Use for strengthening sandstone with affecting colour tone and ability of the stone to breath.
- Very fluid
- Weather resistant
- Colour: Transparent
- Content: 1 L can



50 / 200 / 400 ml Cartridge



3 kg Unit

## CRL AKEMI® AKEPOX 2030

- Still flowing, two component construction adhesive
- Used for filling joints, encasing reinforced steel, for bonding work in a horizontal position and levelling off the uneven surfaces of natural and artificial stone
- Good adhesion on metal and on damp stone

### Cat. No. 4810563

Colour: Grey/Green  
Size: 50 ml cartridge

### Cat. No. 4810564

Colour: Black  
Size: 50 ml cartridge

### Cat. No. 4810565

Colour: Brick Red  
Size: 50 ml cartridge

### Cat. No. 4810603

Colour: Grey/Green  
Size: 200 ml cartridge

### Cat. No. 4810600

Colour: Black  
Size: 400 ml cartridge

### Cat. No. 4810604

Colour: Grey/Green  
Size: 400 ml cartridge

### Cat. No. 4810605

Colour: Brick Red  
Size: 400 ml cartridge

### Cat. No. 4810614

Colour: Light Ivory  
Size: 400 ml cartridge

### Cat. No. 4810601

Colour: Grey/Green  
Size: 3 kg unit

### Cat. No. 4810612

Colour: Light Ivory  
Size: 3 kg unit

For applicator guns see page 62



50 / 400 ml Cartridge



2.25 kg Unit

## CRL AKEMI® AKEPOX 5010

- Gel-like, two component construction adhesive
- Only a slight tendency to discolour
- Easy to colour
- For face joints indoors and outdoors - particularly where they are visible
- For quadratures and restoration work in contact with mortar
- Ideal with white natural and artificial stone
- Colour: Transaprent/Milky White

### Cat. No. 4810684

Size: 50 ml cartridge

### Cat. No. 4810687

Size: 400 ml cartridge

### Cat. No. 4810685

Size: 2.25 kg unit

Weather Resistant

## CRL AKEMI® AKEPOX 2020

- Still flowing, two component construction adhesive
- Used for filling joints, encasing reinforced steel, for bonding work in a horizontal position and levelling off the uneven surfaces of natural and artificial stone
- Good adhesion on metal and on damp stone
- Colour: Grey
- Content: 3 kg unit

### Cat. No. 4810620



3 kg Unit



## CRL AKEMI® AKEPOX 3000 Cartridge System

- Gel-like, fast hardening, two component adhesive in cartridges
- Can be exactly dosed and homogeneously mixed
- Fixing adhesive for low loads
- Used for fastening metal letters
- Ideal for fixing natural and artificial stone into position
- Size: 50 ml cartridge

**Cat. No. 4810638**

Colour: Transparent

**Cat. No. 4810561**

Colour: Black



4810581

## CRL AKEMI® AKEPOX 4050 Anti-Slip Mix Cartridge System

- Weather resistant, two component anti-slip product (R11)
- For anti-slip surfaces on natural and artificial stone, ceramics, stairs, entrance areas and areas exposed to water and sloping
- Suitable for granite indoors and outdoors
- Suitable for limestone only indoors
- Size: 400 ml cartridge

**Cat. No. 4810581**

Colour: Anthracite

**Cat. No. 4810587**

Colour: Yellow

**Cat. No. 4810583**

Colour: White

**Cat. No. 4810588**

Colour: Red Brown

**Cat. No. 4810589**

Colour: Beige

**Cat. No. 4810590**

Colour: Grey

**Cat. No. 4810585**

For Anti-Slip mix, to mark area of application  
2 x 50 m roll



4810585

## CRL AKEMI® Mixing Nozzles



4810665



4814031



4814032

**Cat. No. 4810665**

For 200 ml/400 ml cartridges

**Cat. No. 4814031**

For 50 ml AKEPOX cartridges  
Dental tip

**Cat. No. 4814032**

For 50 ml AKEPOX cartridges  
Standard tip





### CRL Skeleton Applicator Gun MR400X

Cat. No. 4810636

- Includes set of adapter disks for  
200 ml cartridges at 2:1  
395 ml cartridges at 1:1  
400 ml cartridges at 2:1  
490 ml cartridges at 10:1



### CRL AKEMI® Plastic Applicator Gun

Cat. No. 4810639

- Includes plunger for  
37 ml cartridges at 10:1  
50 ml cartridges at 1:1, 2:1



### CRL AKEMI® Colourbond Gun

Cat. No. 4814029



### CRL Skeleton Gun Adaptor

- For use with CRL Skeleton Caulking Gun 0744K - see page 71
- Include plunger for  
50 ml cartridges at 1:1, 2:1

Cat. No. 4845007  
1:1 ratio

Cat. No. 4845008  
2:1 ratio

### CRL AKEMI® Akelux Stone Repair System

Cat. No. 4862000

- Uses UV technology to repair any damage on any stone such as chips and scratches



#### Kit Includes

- 2 ml filler liquid
- Primer pen
- 150 ml cleaner
- Abrasive cloth
- 150 ml polishing paste
- 1 ml retouching pen
- Transparent film
- Protective eye shield
- Dental spike
- Planer
- Cleaning brush

### CRL AKEMI® Akelux Basic Kit - Stone Repair System

Cat. No. 4862062

- For a professional repair of all types of stone
- Quick and permanent repair
- Transparent high-tech adhesive
- Heat and pressure resistant
- For indoor and outdoor use



#### Kit Includes

- 3 ml filler, transparent liquid
- 2 ml filler, white
- 2 ml filler, black
- 2 x Dental spikes
- Primer
- Silicone abrasive cloth
- Polishing paste
- Transparent film
- Planer
- Grinding/Polishing block
- Cleaner

### CRL AKEMI® Akelux Filler Liquid

- For use with Akelux repair kit
- Spare adhesive for Akelux repair kit



**Cat. No. 4862001**  
Colour: Transparent, liquid  
Content: 3 ml syringe

**Cat. No. 4862002**  
Colour: Transparent, gel  
Content: 3 ml syringe

**Cat. No. 4862003**  
Colour: White, gel  
Content: 2 ml syringe

**Cat. No. 4862004**  
Colour: Marble White, gel  
Content: 2 ml syringe

**Cat. No. 4862005**  
Colour: Green, gel  
Content: 2 ml syringe

**Cat. No. 4862006**  
Colour: Yellow, gel  
Content: 2 ml syringe

**Cat. No. 4862007**  
Colour: Blue, gel  
Content: 2 ml syringe

**Cat. No. 4862008**  
Colour: Red, gel  
Content: 2 ml syringe

**Cat. No. 4862009**  
Colour: Brown, gel  
Content: 2 ml syringe

**Cat. No. 4862010**  
Colour: Black, gel  
Content: 2 ml syringe

**Cat. No. 4862047**  
Colour: Cream, gel  
Content: 2 ml syringe

**Cat. No. 4862064**  
Colour: Beige, gel  
Content: 2 ml syringe

**Cat. No. 4862065**  
Colour: Grey, gel  
Content: 2 ml syringe

### CRL AKEMI® Akelux Primer Pen

- For use with Akelux repair kit
- Suitable for all stones

**Cat. No. 4862013**



### CRL AKEMI® Akelux Cleaner

- For use with Akelux repair kit
- Content: 150 ml

**Cat. No. 4862014**





### CRL AKEMI® Akelux Abrasive Cloth

- For use with Akelux repair kit
- Micro abrasive cloth is used when wet grinding the area to be repaired
- Minimum order quantity: 5 each

**Cat. No. 4862025**  
Grit: 2400

**Cat. No. 4862026**  
Grit: 3200

**Cat. No. 4862027**  
Grit: 4000

**Cat. No. 4862028**  
Polishing Cloth



### CRL AKEMI® Akelux Polishing Paste

- For use with Akelux repair kit
- Content: 150 ml

**Cat. No. 4862029**



### CRL AKEMI® Akelux Retouching Pen

- For use with Akelux repair kit
- Minimizes the optical difference between the repaired and surrounding area of dark stones
- Content: 1 ml

**Cat. No. 4862030**



### CRL AKEMI® Akelux Transparent Film

- For use with Akelux repair kit
- For covering the surface of the damaged area before light hardening
- Protects the Akelux LED light emitter from soiling by Akelux fillers

**Cat. No. 4862031**



### CRL AKEMI® Akelux Protective Eye Shield

- For use with Akelux repair kit
- Protects eyes from UV radiation
- Sold as each

**Cat. No. 4862033**

### CRL AKEMI® Akelux Dental Spike

Cat. No. 4862034

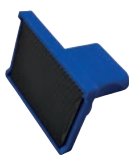
- For use with Akelux repair kit
- For efficient filling of the damaged area



### CRL AKEMI® Akelux Planer

Cat. No. 4862048

- For use with Akelux repair kit
- A handy little tool made of plastic which takes away any excess material on repaired area in order to reach the same level as the rest of the stone surface
- Ensures that the polish on the surrounding stone is not affected



### CRL AKEMI® Akelux Cleaning Brush

Cat. No. 4862024

- For use with Akelux repair kit
- For efficient cleaning of the damaged area





## CRL Handling and Moving



With Vinyl



Without Vinyl

### CRL Spring Clamps

- Available with or without vinyl coated grips and tips
- Available in three sizes
- Bright finish resists corrosion

#### With Vinyl

**Cat. No. JC3201HT**  
Jaw Opening: 25.4 mm

**Cat. No. JC3202HT**  
Jaw Opening: 50.8 mm

**Cat. No. JC3203HT**  
Jaw Opening: 76.2 mm

#### Without Vinyl

**Cat. No. JC3201**  
Jaw Opening: 25.4 mm

**Cat. No. JC3202**  
Jaw Opening: 50.8 mm

**Cat. No. JC3203**  
Jaw Opening: 76.2 mm



### CRL Solo One-Handed Clamp

- Patented design for use with only one hand
- Excellent clamp for day-to-day use
- Ideal for holding straight edges and L squares
- Jaw Opening: 102 mm

**Cat. No. 71004P**



### CRL Quick-Grip® Bar Clamp

- Takes only one hand to operate
- High-tech resin construction
- Up to 68 kg/105 lbs of clamping pressure
- Gripping jaws have vinyl pads
- Jaw Opening: 152 mm

**Cat. No. 546QC**



### CRL Quick-Grip® Bar Clamp/Spreader

- Quick change jaw feature converts from clamp to spreader
- Up to 136 kg/300 lbs of clamping force
- Jaw throat depth is 83 mm/3-1/4 "

**Cat. No. 506QC**  
Jaw Opening: 152 mm

**Cat. No. 512QC**  
Jaw Opening: 305 mm

**Cat. No. 524QC**  
Jaw Opening: 610 mm

# Silicones, Sealants & Caulks

CRL Stone's range of silicones, sealants and caulks can be used on numerous materials including ceramic, quartz, marble, granite, and many more. You will find them in many colours which helps put the finishing touches to any job.



## CRL Silicones & Sealants

# AKEMI®



### CRL AKEMI® Composil Sealant for Expansion and Connecting Joints

- Colour matches available for all renowned Engineered Stone brands, including CRL Quartz
- Fungicidal properties
- Resistant to chlorine
- Paintable
- 310 ml cartridge
- Adheres well to other materials such as ceramic, plaster, glass, woods, metals and plastics

**Cat. No. 4840402**  
Colour: White CC 1100

**Cat. No. 4840404**  
Colour: White CC 1130

**Cat. No. 4840406**  
Colour: Black CC 1000

**Cat. No. 4840416**  
Colour: Cream CC 1620

**Cat. No. 4840419**  
Colour: Cream CC 1650

**Cat. No. 4840420**  
Colour: Cream CC 1660

**Cat. No. 4840421**  
Colour: Cream CC 1670

**Cat. No. 4840437**  
Colour: Grey CC 1850

**Cat. No. 4840441**  
Colour: Khaki CC 1900

**Cat. No. 4840444**  
Colour: Khaki CC 1940

**Cat. No. 4840451**  
Colour: Brown CC 2050

**Cat. No. 4840453**  
Colour: White CC 1150

**Cat. No. 4840454**  
Colour: White CC 1160

**Cat. No. 4840455**  
Colour: Cream CC 1680

Over 50 colours and shades available. Contact our stone operations department for more information.

PURE  
SILICONE  
CONTENT



### CRL Neutral Cure Low Modulus Silicone

- Low odour, neutral cure formula
- Used for bonding/filling joints
- Excellent adhesion to most surfaces
- Low modulus
- High quality formula - low shrinkage
- 300 ml cartridge, 12 per case
- Special countertop display box
- Conforms to ISO 11600

**Cat. No. EURTV408C**  
Colour: Clear

**Cat. No. EURTV408W**  
Colour: White

**Cat. No. EURTV408BL**  
Colour: Black

**Cat. No. EURTV408G**  
Colour: Grey

**Cat. No. EURTV408A**  
Colour: Anthracite

Low Shrinkage

High Quality



### CRL Crystal Clear Silicone

- High clarity when cured
- Only suitable for non-porous materials
- 310 ml cartridge, 12 per case
- Special countertop display box
- Acetic cure
- Colour: Crystal Clear

**Cat. No. EUCCS**

NEW!

# AKEMI®



### CRL AKEMI® - Stone Silicone

- Used for expansion and connecting joints
- For use with natural and artificial stone such as marble, granite, quartzite, sandstone, terrazzo and the like
- Adheres very well to plaster, ceramics, glass, wood, many metals and plastic
- 310 ml cartridge

**Cat. No. 4840201**  
Colour: Transparent

**Cat. No. 4840202**  
Colour: White

**Cat. No. 4840204**  
Colour: Joint Grey

**Cat. No. 4840212**  
Colour: Black

**Cat. No. 4840213**  
Colour: Jasmine

**Cat. No. 4840253**  
Colour: Light Grey with Stone Structure

Other colours available on request.

## CRL Silicones & Sealants



**SILICONE  
BASED**

### CRL eg310 Evergrip™ Painted Glass Splashback and Mirror Adhesive

Cat. No. EG310

- Extra fast grab adhesive
- Extra strong holding capacity
- Fast curing, with skin formation in about five minutes
- Adhesion to almost all surfaces
- Low VOC, solvent free, low odour
- 310 ml cartridge

**Latest Technology**



**STRONGEST,  
LATEST  
TECHNOLOGY**

### CRL eg310ULTRA Complete Adhesive

Cat. No. EG310ULTRA

- MS polymer based
- High strength bonding
- Neutral curing and odourless
- Cures with atmospheric moisture
- Super-fast bonding of all types of quartz and natural stone, splashbacks and upstands, mirrors, glass, wood, composite panels and metal to a range of substrates
- Suitable for supporting large and heavy weight marble and granite splashbacks
- Free of silicone and isocyanides
- 290 ml cartridge

**Specialist Painted Glass Splashback Adhesive**

**Excellent holding power**

### CRL Premium Grade Acrylic Latex Caulk

Cat. No. CRL15W

- Paintable and easily cleaned with soap and water
- Odourless and adheres to all common interior substrates
- 300 ml cartridge
- 25 year life expectancy



## CRL Silicones & Sealants Accessories

---



### CRL Little Red Nozzle Caps

Cat. No. LRC35

- Economical and reusable
- Reduces sealant waste



### CRL 102 mm Screw-On Silicone Nozzles

Cat. No. S1LN0Z

- Pack of 24



### CRL Nozzle Cutter

Cat. No. NC594

- Use on all plastic cartridges to cut nozzle tip and threaded tip then cut the nozzle tip to the desired opening size at the proper angle



### CRL Standard Smooth Rod Caulking Gun

Cat. No. ER3

- Thumb pressure release button
- Our best seller is also great value
- Perfect for low viscosity materials



### CRL Skeleton Caulking Gun “Kennet”

Cat. No. 0744K

- A low cost hand operated gun
- For use with 310 ml cartridge



## CRL Silicones & Sealants



### CRL Silicone Spatula

**Cat. No. 55BSS**

- Lightweight and flexible; simplifies tooling of sealants
- Titanium catalyst material will not stick to silicone or other sealants
- 83 mm x 89 mm x 5 mm



### CRL 8-In-1 Painters Tool

**Cat. No. HW048**

- 76 mm wide blade
- Multi purpose tool
- Used to scrape paint, remove putty, spread compound, clean paint rollers, open cracks for patching, open lids, pull nails and remove bottle caps



### CRL Tooling Knives

- Large soft-grip handle
- Flexible or stiff high carbon steel blade
- Several blade widths to choose from
- Economically priced

**Cat. No. HW033**

Blade width: 38 mm, flexible

**Cat. No. HW034**

Blade width: 51 mm, flexible

**Cat. No. HW035**

Blade width: 76 mm, flexible

**Cat. No. HW036**

Blade width: 102 mm, flexible

**Cat. No. HW039**

Blade width: 76 mm, stiff



### CRL E.Z. Cut Out Tool

**Cat. No. EZ1010**

E.Z. Cut Out Tool

- Easy and simple to use
- Ideal for cutting out old silicones and adhesives

**Cat. No. EZ1022**

Replacement Blade



Modern living  
made easy.

VICENZA - QZ136

CRL Quartz is a highly durable engineered quartz stone, available in a large range of colours and in extra-large slab format allowing for greater consistency in design. Hard-wearing and easy to care for, it is the perfect surface for the kitchen and bathroom.



See page 112

e: [crlquartz@crlstone.co.uk](mailto:crlquartz@crlstone.co.uk)  
[www.crlquartz.co.uk](http://www.crlquartz.co.uk)



CRL  
**Quartz**  
SURFACES

**CRL|STONE**

# Care & Protection Products

From highly effective cleaning agents to colour intensifiers, CRL Stone offers a wide range of consumables for cleaning, impregnating and sealing.



# CRL Cleaning Products

By means of intensive research and development, our comprehensive range of products is continually being improved and extended. The very high quality level of CRL and AKEMI® products is ensured by up-to-date production and filling plants and continual inspection and testing.

## Engineered Stone

Artificial stone consists of pieces of natural stone which are bound together by means of synthetic resin or cement. Examples of cement-bound artificial stone are concrete ashlar or terrazzo. Examples of resin-bound artificial stone are quartz, ceramic and porcelain.

## Natural Stone

In the case of natural stone, a distinction must be made between hard and soft rock. The hard types of rock include granite, gneiss, quartzite, and porphyry. The soft types of rock include sandstone, limestone, marble (Thassos, Carrara, Estremoz, Palisandro etc.), Jurassic marble, Solnhofen stone, Travertine, Botticino, and Trani.

## Sensitivity to Acids

Particular kinds of natural stone consist mainly of calcium carbonate and are called limestone. Limestone, for example marble, is sensitive to acids. Cement-bound artificial stones, such as concrete ashlar, are also acid-sensitive. This is the reason why wine or fruit juice must be removed from the surface of the stone immediately. We strongly advise you to avoid using acidic cleaning agents for these kinds of stone.



## CRL Stone Solid Surface Cleaner

Cat. No. EB1701S

- High quality Solid Surface Cleaner, perfect for stone countertops and surfaces.
- Cleans polishes and protects stone surfaces
- Ammoniated formula with pleasant aroma
- 660 ml
- 12 cans per case
- Registered INS A1 Food Safe

NOTE: 1 litre spray bottle available on request

**Bestseller**



EB1701

EB1701T

## CRL Glass and Mirror Cleaner

Cat. No. EB1701

Content: 660 ml aerosol can

- A long time favourite
- Ammoniated formula with a pleasant aroma
- 12 per case

Cat. No. EB1701T

Content: 1 L trigger spray bottle

Own labelling available. Please contact our stone operations department for more information.



## CRL AKEMI® Stone Cleaner

- Slightly alkaline cleaning product
- Free from phosphates and lyes
- Biologically degradable
- Used for thoroughly removing building dirt
- Removes coats of polish and wax, slight concrete films, oil and grease, soot and tar, the remains of synthetic paints as well as plaster on all natural and artificial stone such as marble, travertine, terrazzo, granite, brick and cotto slabs, tiles, fair-faced concrete and fine stonewear

**Cat. No. 4810812**

Content: 1 Litre bottle

**Cat. No. 4810813**

Content: 5 Litre canister



## CRL AKEMI® Mild Stone Soap

**Cat. No. 4810830**

- Suitable for the daily care of smooth or rough, absorbent or non-absorbent, untreated, impregnated or sealed natural and cast stone floors
- Does not contain any waxes, polymers or lusting agents
- Does not result in a film or residue on the surface of the stone
- Content: 1 Litre bottle



## CRL AKEMI® Surface Disinfectant

**Cat. No. 4811972**

- An acid cleaner which quickly and durably removes stubborn lime deposits, rust spots, soap remanence and dirt on natural and artificial stone, tiles and plastics, as well as glass and high-grade steel in kitchens, bathrooms, toilets, and showers
- Disinfectant cleaner concentrate made of disinfecting cleaning agent on the basis of organic acids with non-ionogenic and cationic tensides which is free of phosphates and strong in organic acids
- Biologically degradable
- Minimum order: 6 each
- Content: 1 Litre bottle

NOTE: Not suitable for limestone and other natural stones which are not resistant to acids



## CRL AKEMI® Object Disinfectant

**Cat. No. 4811969**

Content: 500 ml bottle

Minimum order: 12 each

**Cat. No. 4811970**

- An aqueous, ready-to-use disinfection preparation based on fast acting biocides, surfactants and other auxiliary materials
- Used for the fast disinfection of objects and facilities which are in direct contact with the human body
- Due to its high material compatibility the product can also be used on sensitive surfaces made of acrylic glass or Plexiglas





## CRL AKEMI® Disinfectant Cleaner

Cat. No. 4810826

- An acid cleaner which quickly and durably removes stubborn lime deposits, rust spots, soap remnants, and dirt on natural and artificial stone, tiles, and plastics, as well as glass and high-grade steel in kitchens, bathrooms, toilets, and showers
- Content: 1 Litre bottle

NOTE: Not suitable for limestone and other natural stones which are not resistant to acids



## CRL AKEMI® Wax Stripper

Cat. No. 4810816

- A cleaning agent based on various highly effective solvents and emulsifiers
- Enables tar, bitument, paint, and even most stubborn wax coats to be removed effortlessly
- Removes fluates, stone sealers and polishes from natural and artificial stone without any problems
- Biodegradable and free from chlorinated hydrocarbons
- Minimum order: 6 each
- Content: 1 Litre bottle



## CRL AKEMI® Oil and Grease Remover Paste

Cat. No. 4810896

- Contains solvents and special absorbant substances
- Suitable for all kinds of natural and cast stone
- Removes grease, oil, and wax stains, as well as discolourations in border areas resulting from plasticizers in sealing materials
- Does not contain acids, leaching agents, waxes, resins or silicones
- Easily applied to smooth and polished surfaces and has a good adhesion on the surface
- Content: 250 ml tube

**Best Seller**



## CRL AKEMI® Rust Remover

Cat. No. 4810814

- Enables rust and rust stains to be removed effortlessly from acid-resistant natural and artificial stone
- In addition, rusty metal inclusions in natural stone (granite) are automatically transformed with a longterm protective effect.
- Content: 1 Litre bottle

NOTE: Not suitable for limestone and other natural stones which are not resistant to acids



## CRL AKEMI® Rust Remover Paste

Cat. No. 4810824

- Enables rust and rust stains to be removed effortlessly from acid-resistant natural and artificial stone
- In addition, rusty metal inclusions in natural stone (granite) are automatically transformed with a longterm protective effect
- Very suitable for application on vertical areas
- Content: 1 Litre can



## CRL AKEMI® Graffiti Remover

Cat. No. 4810880

- The product has excellent solvent and swelling properties when applied to enamel and aerosol paints
- Its gel-like consistency means it is easily applied to vertical surfaces
- The resulting paint dispersion does not cause stains and is easily removed with steam
- Content: 1 Litre can



## CRL AKEMI® Algae and Mildew Remover Power

Cat. No. 4810832

- Promptly and thoroughly removes natural layers and discolouration caused by blossoms and leaves, bird droppings, and other kinds of dirt from grave stones, walls, stone-slab footpaths, and other stone surfaces such as marble, granite, concrete and other natural stones
- Content: 1 Litre bottle



## CRL AKEMI® Cleaner I

Cat. No. 4845014  
Content: 250 ml bottle

Cat. No. 4845015  
Content: 1 Litre bottle

- Excellently suited for a gentle cleaning of parts such as kitchen working tables after production and prior to impregnation
- Dissolves films of grease (fingermarks), as well as residues of adhesives
- Suitable for all natural and artificial stones, tiles, ceramics, glass and metal, as well as many plastics and painted surfaces
- Solvent containing cleaner based on alcohol

**Best Seller**



## CRL AKEMI® Cleaner A

Cat. No. 4845012

- Used for an intensive cleaning of surfaces which have to be glued, filled or sealed
- Removes residues of adhesives or sealants not yet hardened from parts made of natural and artificial stone, tiles, ceramics, glass and metal
- Dries rapidly from the surface
- Working tools can also be cleaned
- Solvent containing cleaner based on ketone
- Content: 1 Litre bottle

**Suitable for quartz and natural stone surfaces**

**Best Seller**



## CRL AKEMI® Stone Impregnation

- Suited to achieve a water and dirt repellent effect on absorbent mineral substances such as natural and cast stone
- It is also very well suited for bricks, sand-lime bricks, concrete, and mineral-based plaster

**Cat. No. 4810834**  
Content: 1 Litre bottle

**Cat. No. 4810835**  
Content: 5 Litre canister



## CRL AKEMI® Stain Repellent Nano-Effect

- Even stronger water, grease, and oil-repellent effect as Stain repellent
- Begins to work after several minutes and is fully effective after 2 to 3 hours
- As a rule the colour of the stone remains unchanged
- Ball shaped liquid pearls lie on the surface for easy cleaning
- For indoor and outdoor use
- Food safe - certified by an external German testing institute
- Prevents the stone from staining spots and makes the removing of spots much easier, while the stone remains capable of breathing

**Cat. No. 4811931**  
Size: 250 ml bottle

**Cat. No. 4811932**  
Size: 1 Litre bottle

**Cat. No. 4811933**  
Size: 5 Litre canister

**Best Seller**



## CRL AKEMI® Stain Repellent W

- A special impregnation which repels water, grease and oil
- Water based
- Only has a faint odour, therefore it is ideal for use in rooms which are already occupied
- Excellently suitable for application on humid surfaces
- For indoor and outdoor use
- Food safe - certified by an external German testing institute
- Prevents the stone from staining spots and makes the removing of spots much easier, while the stone remains capable of breathing

**Cat. No. 4810856**  
Content: 250 ml bottle

**Cat. No. 4810857**  
Content: 1 Litre bottle

**Cat. No. 4810858**  
Content: 5 Litre canister



## CRL AKEMI® Stain Repellent Super

- Outstanding impregnation on the basis of silicone with double stain protection effect
- For indoor and outdoor use
- Food safe - certified by an external German testing institute
- Prevents the stone from staining spots and makes the removing of spots much easier, while the stone remains capable of breathing

**Cat. No. 4810949**  
Content: 250 ml bottle

**Cat. No. 4810950**  
Content: 1 Litre bottle

**Cat. No. 4810951**  
Content: 5 Litre canister



## CRL AKEMI® Transformer

- Weather resistant product
- Can be used as a sealer for the unfinished edges of ceramics such as Ceralsio and Ultra Compact Surfaces
- Can also be used as a sealer for drainer grooves and recesses cut in to all types of natural stones
- Provides strong colour intensification
- Fast and strong treatment
- Does not form a layer on the surface of the stone
- Content: 250 ml bottle
- Larger size bottles available on request

**Cat. No. 4812042**



## CRL AKEMI® Colour Intensifier

Cat. No. 4810887

- Weather resistant product with a long term effect of both indoors and outdoors
- Wet-look without a glossy shine
- Repels water and dirt
- Particularly suitable for rough and absorbent natural stone
- Content: 1 Litre bottle



## CRL AKEMI® Colour Intensifier W

Cat. No. 4810947  
Content: 1 Litre bottle

Cat. No. 4810948  
Content: 5 Litre canister  
Minimum order: 2 each

- Water based
- Weather resistant product with a long term effect of both indoors and outdoors
- Wet-look without a glossy shine
- Repels water and dirt
- Particularly suitable for rough and absorbent natural stone



## CRL AKEMI® Darkner Super

Cat. No. 4810940  
Content: 1 Litre bottle

Cat. No. 4810941  
Content: 5 Litre bottle

- Especially suited for colour enhancement of dark and black stone (such as Nero Assoluto, Impala black and Galaxy)
- Weather-resistant product with a long-term effect for indoors and outdoors. Damaged areas (e.g. hairline cracks) can be treated
- The surface thus obtains a homogeneous appearance
- Especially suited for fine ground and polished stones



## CRL AKEMI® Anti-Graffiti

Cat. No. 4810890  
Content: 1 Litre bottle

Cat. No. 4810891  
Content: 5 Litre canister

- Weather-resistant, diffusible in vapours, does not yellow, has a non-sticky surface, and has water and paint repellent properties
- It causes only a minimal deepening of the colour tone which allows graffiti to be easily removed by means of steam
- Functions as a prophylactic protective treatment on façades, buildings, monuments, etc
- It is especially suitable for all absorbent mineral bases such as natural and artificial stone, concrete, bricks, clinker, sandlime bricks, plaster, etc



## CRL AKEMI® Impregnation Remover

Cat. No. 4812003

- Removes stains caused by impregnations as well as heavy dirt (e.g. residue of lacquers) on natural stone, concrete and ashlar
- It's gel consistency makes it suitable for vertical or horizontal applications
- Content: 1 Litre bottle



## CRL AKEMI® Stone Sealer

- The colourless acrylic coating provides long-term protection and is water and dirt-resistant
- It is used to seal porous and absorbent surfaces. Colours and structures appear more pronounced
- On account of the sealed surface, the stone is easier to care for
- Preferably used indoors

**Cat. No. 4810838**  
Content: 1 Litre bottle  
Finish: Satin

**Cat. No. 4810839**  
Content: 5 Litre canister  
Finish: Satin

**Cat. No. 4810840**  
Content: 1 Litre bottle  
Finish: Matte

**Cat. No. 4810841**  
Content: 5 Litre canister  
Finish: Matte

## Care



## CRL AKEMI® Stone Polish - Silicone Based

- A polish which cleans, cares, and protects at the same time
- It preserves the natural colour and, when polished, returns the original lustre to floors, tables, working surfaces, and window sills
- Excellently suited for outdoor use
- Content: 1 Litre bottle

**Cat. No. 4810842**

## Surface Treatment



## CRL Brillo Silicone Polish

- CRL Brillo silicone based stone polish is suitable to enhance the gloss of all natural stone
- Content: 750 ml bottle

**Cat. No. 48JOLLY07**



## CRL AKEMI® Liquid Polish

- Ready-to-use polishing fluid for machine application used to increase the lustre of polished soft stone.
- The lustre of edges, draining boards, and small surfaces can easily be finished
- Reliefs, tombstones, and balustrades can be polished
- The product is used in the industrial production and suitable for brightening up already laid flooring
- Application also on surfaces with residual moisture
- For lightcoloured soft stone, like limestone (travertine), marble, and onyx
- Content: 1 Litre bottle

**Cat. No. 4811810**  
Colour: Marble Light

**Cat No. 4811815**  
Colour: Marble Dark

**Cat. No. 4811800**  
Colour: Granite Light

**Cat. No. 4811805**  
Colour: Granite Dark



## CRL AKEMI® Anti-Slip R 9

- Produces an anti-slip effect on smooth polished and glazed surfaces, especially granite, gneiss, gabbro, other types of hard stone, ceramic tiles and enamelled surfaces
- Can be used indoors and outdoors
- The surfaces which have been treated with AKEMI® Anti-Slip R9 normally comply with the requirements pertaining to slip prevention under wet conditions as laid down in DIN51130 and BGR181 (previously ZH 1/571 - class R9 slip resistance) as well as the US guidelines on surface safety (OSHA/ADA)
- The polish of the stone and the attractiveness of the colour are retained to a wide extent. Protective impregnation with Stain Repellent Super or Colour Intensifier does not impair the class R9 slip resistance (tested by the LGA Würzburg)
- Content: 1 Litre bottle

**Cat. No. 4811861**



## CRL AKEMI® AKEPOX 2015 Anti-Stain Coating

- Long lasting, solvent-free, two component protective coating
- Used for the rear and the lateral sealing of all types of natural and artificial stone
- Protects against blooming, rust stains, discolouring and flaking caused by rising moisture
- Can be used indoors and outdoors, weather resistant
- Good adhesion on slightly humid stones
- Thin consistency for easy application, and high coverage
- 150 g product will cover 1 SQM
- Colour: Grey
- Content: 900 g unit

**Cat. No. 4811744**





### CRL AKEMI® Quartz Care Kit

Cat. No. 4811947

- Includes
  - 250 ml Quartz Clean and Care
  - 250 ml Quartz Polish
  - 250 ml Quartz Intensive Cleaner
- All in a portable case of elegant design



### CRL AKEMI® Quartz Care Kit

Cat. No. 4811961

- Includes
  - 500 ml Crystal Clean
  - 500 ml Quartz Intensive Cleaner Cloth
- All in a portable case of elegant design



### CRL AKEMI® Stone Care Kit

Cat. No. 4810799

- Includes
  - 500 ml Crystal Clean Spray
  - 250 ml Stain Repellant Nano
  - 250 ml Stone Cleaner
- All in a portable case of elegant design



### CRL AKEMI® Crystal Clean

Cat. No. 4810954

Content: 500 ml spray bottle

Cat. No. 4810955

Content: 1 Litre bottle  
(Concentrate)

- Multi-purpose cleaning spray for daily use
- Quick drying and leaves no streaks
- Especially suited for the removal of light dirtying e.g. light films of oil and grease, and dirt
- PH Neutral so can be used on all types of natural and engineered stone, as well as glass, plastic, and stainless steel
- 1 L of Crystal Clean can be diluted to make 70 L approx

Suitable for the daily cleaning of



Quartz

SURFACES

and



Ceralsio

CERAMIC SURFACES



## CRL AKEMI® Quartz Clean and Care

Cat. No. 4811951

- Contains highly effective, modified organic compounds, combined with cleaning components
- Especially developed for quartz-based stone
- Cleans surface marks
- Enhances the resistance of quartz surfaces to stubborn staining (e.g. felt-tip pens, marker pens)
- Refreshes the lustre of the surface and features a fresh, clean fragrance
- Resistant to UV radiation and food safe
- Suited for the regular cleaning and care of kitchen tops, counters and other surfaces of quartz-based stone
- Content: 500 ml bottle



## CRL AKEMI® Triple Effect

Cat. No. 4810846

- Highly effective stone care and impregnation product
- Contains modified organic compounds, combined with cleaning components which do not form layers; food safe
- Content: 500 ml bottle



## CRL Solid Surface Cleaner

Cat. No. 53K1N1

- Cleans and polishes worktops and fireplaces
- Ideal for the final clean down after installation of worktops
- Content: 500 ml can



## CRL Countertop Spray

Cat. No. 3371149E

- Cleans, polishes, and protects stone surfaces. Invisible when buffed and safe for all stone surfaces
- Fresh citrus scent
- Content: 500 ml can

**Best Seller**



## CRL Trigger Spray Dispenser Bottle

Cat. No. DB21

- Large 0.47 Litre (16 oz) capacity bottle
- Adjustable flow nozzle

## CRL Aftercare Products

---



### CRL Lint-Free Wipes

Cat. No. BX15

- Strong, white four-ply paper wipes are virtually lint-free
- Reinforced nylon scrim in both directions so they work great wet or dry
- Convenient pop-up dispenser box



### CRL Micro Fibre Wipes

Cat. No. MFW2

- Streak free cleaning on worktops, windows and mirrors
- Washable up to 500 times
- 406 mm x 406 mm size
- Packed two per poly bag with a hanger hook so you can also offer them for resale to your customers



### CRL Wipes in a Bucket

Cat. No. CRL99W

- Quickly removes urethane, tough soils, adhesives, grease, etc
- No rinsing, nor drying, no residue
- Effective, portable and convenient



### CRL Monster Roll White 2-Ply Industrial Wipes

Cat. No. 1714A

- Sold per roll of 875 wipes
- 270 mm x 350 mm wipe size
- Perforated for easy tear-off





**Trade counter opening  
hours are 8am to 5pm  
Monday to Friday**



# Measuring, Fixing, Safety Tools & Accessories

From tape measures, to chinagraph pencils and safety goggles to heavy duty aprons, CRL Stone is your one-stop-shop for all your safety equipment, marking tools and measuring needs.



## CRL Measuring Tools

---



### CRL Stanley® Tape Measure

Cat. No. 0426

- Metric and imperial
- Blade locking mechanism
- Blade width: 13 mm
- Blade length: 3 m



### CRL Fraction/Metric Tape Measure

Cat. No. 54819  
Blade width: 19 mm

Cat. No. 54829  
Blade width: 25.4 mm

- Self-locking professional quality blade
- Tape reads in both fractional and metric
- Tape reads in vertical orientation on back side of blade
- Carpenter's two colour blade markings down to 0.8 mm
- Blade length: 4.8 m



### CRL Metric Tape Measure

Cat. No. TR125M

- Blade width: 25.4 mm
- Blade length: 8 m



### CRL Pexiso X2 Laser Distance Measurer

Cat. No. 3356L

- Accurate measurements up to 30.5 mm
- Distance measuring accuracy of 3.2 mm at 30.5 mm
- Ergonomic, compact design

# CRL Measuring Tools



A yellow spirit level with two vials and a hook at one end.


**CRL Stanley® FatMax™**

- Professional Quality
- Point-respell aluminium
- Block vials on each end
- Point-respell aluminium

**Cat. No. ST43524**  
Length: 609 mm

**Cat. No. ST43548**  
Length: 1219 mm

**Cat. No. ST43572**  
Length: 1828 mm



Three wooden set squares: a large triangle (03253), a small L-square (03352), and a T-square (03173).


**CRL Set Squares**

- The sturdy, durable and accurate design makes this the ideal tool for any glazier
- Made to exacting specifications to ensure the right angle time after time
- Single piece

**Cat. No. 03253**  
Size: 1550 mm  
L-Square braced

**Cat. No. 03352**  
Size: 1350 mm  
L-Square un-braced

**Cat. No. 03173**  
Size: 1350 mm  
T-Square Super



A black phenolic L-square.

**CRL Phenolic L-Square Unbraced**

- Sturdy, durable and accurate
- Made to exacting specifications to ensure the right angle time after time
- Solid design

**Cat. No. M00555**  
Size: 1100 mm

**Cat. No. M00556**  
Size: 1310 mm



A black sole piece square with a central hole.

**CRL Sole Piece Square Braced**

- Sturdy, durable and accurate
- Made to exacting specifications to ensure the right angle time after time
- Solid design

**Cat. No. M00567**  
Size: 750 mm

**Cat. No. M00570**  
Size: 1290 mm

## CRL Marking Tools



52101001

52101002

### CRL Crayons

- Ideal for marking all types of stone
- 12 per pack

**Cat. No. 52101001**  
Colour: Red

**Cat. No. 52101002**  
Colour: Blue



0336

0337

0338

0339

### CRL Chinagraph Pencils

- Ideal for marking all types of stone
- The pencil mark is impervious to water and dampness, yet is easily removed with a dry cloth
- Supplied in packs of one dozen

**Cat. No. 0336**  
Colour: White

**Cat. No. 0337**  
Colour: Yellow

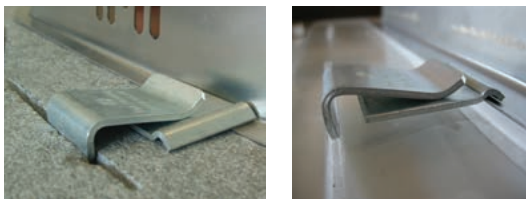
**Cat. No. 0338**  
Colour: Red

**Cat. No. 0339**  
Colour: Black

## CRL Fixing



Used on granite



Used on porcelain

### CRL G-CLIP and CRL Z-CLIP Sink Fixer

- Fits under-mounted sinks
- Eliminates the risk of a sink falling out
- Does not require any special tooling
- Preparation and installation is done with the industry standard tooling
- No need to build a sub-frame to support the sink
- Holds up to 100 kg

**Used on granite**  
**Cat. No. GCL1P25**  
Quantity: 25

**Cat. No. GCL1P50**  
Quantity: 50

**Used on porcelain**  
**Cat. No. ZCL1P100**  
Quantity: 100

**Used on porcelain**  
**Cat. No. ZCL1P100**  
Quantity: 100

# CRL Safety Accessories

---



## CRL Safety Goggles

Cat. No. 0607

- Strong, lightweight goggles with good clear vision and ventilated sides to prevent misting
- They offer comfort and protection against flying particles, dust and splash



## CRL Safety Spectacles

Cat. No. VS0010

- Distortion free, anti-glare clear lenses
- Can be worn with or without prescription glasses
- Feature exclusive wrap-around side shields, and an anti-glare brow guard
- Impact resistant polycarbonate spectacles



## CRL Safety Helmet

Cat. No. 0614

- Made from an improved, injection-moulded, high density polyethylene that offers superior protection against impact, penetration, and shock
- Good resistance to chemicals and voltage, yet it weighs less than 340 g, making it comfortable to wear
- Four point integral suspension has head gripping, extra contoured nape strap for better fits of all head sizes



## CRL Rubber Apron

Cat. No. 114

- Full length, rubberized nylon
- Welded seams and grommets for cotton shoulder straps
- Comfortable to wear
- Washable in cold water



## CRL Disposable Dust Mask

Cat. No. G1001

- Ideal protection against dust when sanding, grinding and cutting
- Protect against nuisance and non-toxic dusts, powders, pollen, and other common airborne irritants
- Comfortable and lightweight, they are designed to be worn with or without eyeglasses or goggles without interfering with your maximum field of vision
- Sold per box of 50



## CRL Tyvek® Shoe Covers

Cat. No. 1SC

- Protects your customer's floor mats
- Made of Lightweight Tyvek® Material with PVC sole
- One size fits all
- 10 pairs per pack

### Performance Information

1 being the lowest performance index

Abrasion resistance performance index (1-4)  
 Blade cut resistance performance index (1-5)  
 Tear resistance performance index (1-4)  
 Puncture resistance performance index (1-4)



#### CRL Powerflex Performance Gloves

Cat. No. 0625A

- Excellent cut resistance and grip
- Protects against cuts, punctures, and slashes
- Cut Level 5
- Performance: 4544
- Sold by the pair
- Size: Small

Tested to EN388



#### CRL Powerflex + Performance Gloves

Cat. No. 0625  
Size: Small

Cat. No. 0627  
Size: Large

- Excellent cut resistance and grip
- Protects against cuts, punctures, and slashes
- Cut Level 5
- Performance: 3444
- Sold by the pair

Cat. No. 0626  
Size: Medium

Tested to EN388



#### CRL Mariflex Industrial Gloves

Cat. No. 0637M  
Size: Medium

Cat. No. 0637XL  
Size: Extra Large

- Protects against cuts, punctures, and slashes
- Performance: 3143
- Sold by the pair

Cat. No. 0637L  
Size: Large

Cat. No. 0637XXL  
Size: XXL

Tested to EN388



#### CRL Gristle Gloves

Cat. No. 0606

- Lightweight cotton gloves with knitted wrists
- Fully dipped polyurethane coating for improved grip
- Not tested to EN388
- Classed as minimal risk
- One size



#### CRL 7-Pocket Tool Pouch

- Maximum durability premium leather
- Rivet reinforced
- Quick release tool clamp
- Closed and open ended pockets
- Designed to fit standard tools

Cat. No. MN924



#### CRL Disposable Foam Ear Plugs

- Economical ear protection
- Cat. No. ES986



## CRL First Aid Kits



### CRL 10 Person First Aid Kit

Cat. No. K61027

- Meets ANSI Standard Z308.1.2009

#### Kit contains:

##### Bandage Assortment

Certi-Strip Plastic, 25.4 mm x 76.2 mm  
Certi-Gauze Pad, 76.2 mm x 76.2 mm  
Gauze Non-Stick Pad, 50.8 mm x 76.2 mm  
Triangular Bandage, 1016 mm  
Certi-Strip, Fingertip  
Certi-Strip, Knuckle

##### First Aid Assortment

BZK Towelettes, 127 mm x 177.8 mm  
Certi-Burn Cream, 1 gm.  
Certi-Antibiotic Cream, 1 gm.  
Ammonia Inhalant  
PVP Iodine Wipe-Ups, 25.4 mm x 50.8 mm  
Absorbent Compress, 32 sq. in.

Nitrile Gloves, 1 Pair  
Adhesive Certi-Tape,  
12.7 mm x 2286 mm  
First Aid Facts Sheet



### CRL 25 Person First Aid Kit

Cat. No. K61029

- Meets ANSI Standard Z308.1.2009

#### Kit contains:

##### Bandage Assortment

Certi-Strip Plastic, 25.4 mm x 76.2 mm  
Certi-Gauze Pad, 76.2 mm x 76.2 mm  
Gauze Non-Stick Pad, 50.8 mm x 76.2 mm  
Triangular Bandage, 1016 mm  
Certi-Strip, Fingertip  
Certi-Strip, Knuckle

Larger kits available on request



designed for living.  
made for life.

PIETRA GREY - NATURAL - CER403N

Ceralsio is a hard-wearing and versatile range of ceramic surfaces suitable for worktops, vanity tops, floor tiling and wall cladding. With its many advantages it is the ideal surface for indoor and outdoor applications. Available in a large range of colours and finishes and in many large format tile sizes.



See page 118

e: [ceralsio@crlstone.co.uk](mailto:ceralsio@crlstone.co.uk)  
www.ceralsio.co.uk



Ceralsio  
CERAMIC SURFACES

CRL | STONE



# Templating, Packing Tools & Tapes

CRL Stone's fantastic templating sheet is an innovative, lightweight and durable solution to wood and MDF. It is complemented by our range of packers, knives and tapes, all available at great prices.

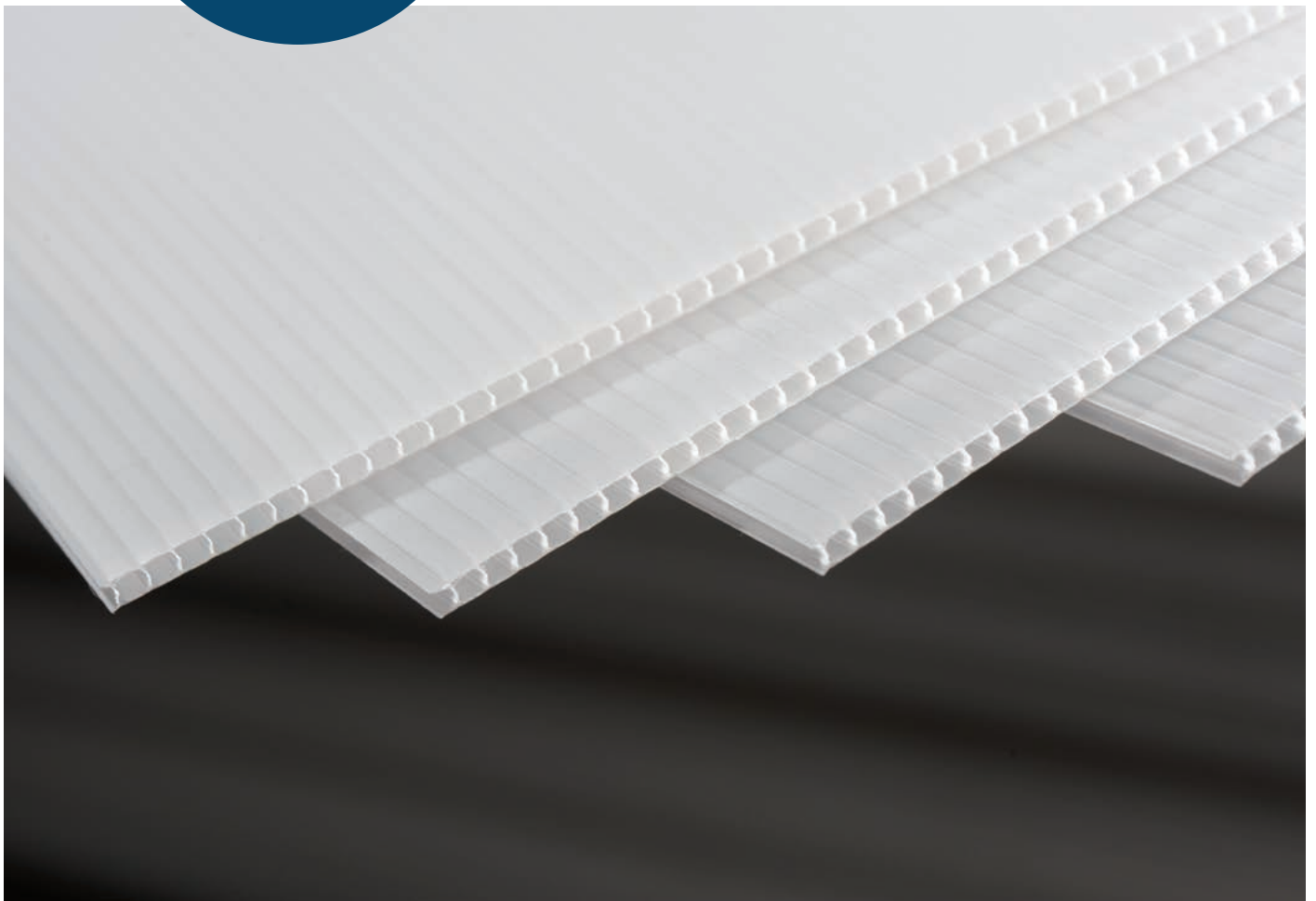
# CRL Corex Templating Sheets

- Inexpensive and durable, Corex sheets are ideal for templating, and are a fabricator's favourite.
- Minimum order 10 sheets.
- Corex 400 g/M<sup>2</sup>
- 3 mm thickness

**Cat. No. 543TR1**  
Size: 1300 x 2400 mm

**Cat. No. 543ATR1**  
Corex 400 g/M<sup>2</sup>  
3 mm thickness  
Size: 680 x 3000 mm

INNOVATIVE,  
LIGHTWEIGHT,  
DURABLE



Carriage cost will apply (charged at cost)



# CRL Templating & Packing Tools



## CRL Corner Cutting Template

Cat. No. RET12

- Make consistent radius corners easier than ever
- Choose from 12 radii (10 mm to 70 mm)
- Solid plastic construction makes it economical and unbreakable
- Features four slip-resistant pads to keep the template in place during use



## CRL Single Edge Razor Blades

Cat. No. 51S

- Our most popular single edge blade
- Precision honed, surgical steel edges
- Individually wrapped to protect the edge
- Multiple uses
- Sold per box of 100

Best Seller



## CRL Single Edge Razor Blades

Cat. No. 1409

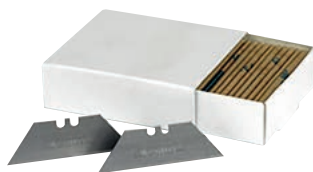
- Deliver durability along with an exact quality cut
- Each blade is individually wrapped to protect the edge until you are ready to use
- Sold per box of 100



## CRL Utility Knife Blades

Cat. No. 1992C

- Our best selling utility blades
- Heavy-duty 0.6 mm thickness
- Handy slide-out dispenser of 100
- Sold per box of 100



## CRL Stanley® Utility Knife Blades

Cat. No. 14171

- Fits CRL heavy-duty retractable blade knife 99 - see page 98
- Sold per box of 100



## CRL Heavy-Duty Industrial Blades

Cat. No. KKB12

- Single edge blades with no side notches
- For use in paint scrapers and mat cutters
- Compatible with our 3223 holder and scraper - see page 97
- Sold per box of 100



## CRL Templating & Packing Tools

---



### CRL Red Devil Safety Scraper

Cat. No. 1419

- For use with 51S single edge razor blades - see page 96



### CRL Razor Blade Holder and Scraper

Cat. No. RS65

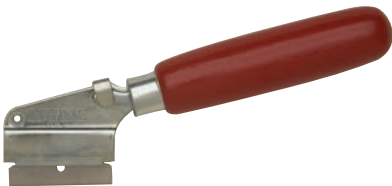
- Safely holds single edge metal razor blades
- Comfortable handle for a sure grip
- Compatible with 51S and KKB12 razor blades - see page 96



### CRL Razor Blade Holder and Window Scraper

Cat. No. 3223

- Safely holds all single edge metal razor blades
- Simple thumb slide to safely conceal blade when not in use
- Compatible with 51S and 1409 single edge razor blades - see page 96



### CRL Razor Blade Knife

Cat. No. 117200

- Easy way to handle single edge razor blades
- This knife is compatible with our 51S & 1409 single edge razor blades - see page 96



### CRL Carton Cutter

Cat. No. 183100

- Uses 51S single edge razor blades - see page 96
- Quality scraping and cutting tool
- Safe and economic way to hold razor blades

## CRL Templating & Packing Tools

---



### CRL Standard Retractable Blade Utility Knife

Cat. No. 97K

- Three position heavy-duty slider actuation
- Overlapping nose for safety
- Comes with 5 blades



### CRL Stanley® Heavy-Duty Retractable Blade Utility Knife

Cat. No. 99

- Industrial quality
- Retractable blade
- Features a five-position slide and heavy-duty metal body



### CRL Heavy-Duty Fixed Blade Utility Knife

Cat. No. 199

- Industrial quality die cast handle
- Comes with five blades



### CRL Autoloading Utility Knife

Cat. No. K82

- Spring-loaded blade housing
- Easy, quick blade replacement
- Supplied with 5 x 1992C blades - see page 96



### CRL Heavy-Duty Retractable Blade Utility Knife

Cat. No. 82L

- Safety orange colour
- Industrial quality
- Comes with three blades

## CRL Templating & Packing Tools



### CRL Olfa® Super Heavy-Duty Retractable Blade Knife

Cat. No. H1K

- Large 25.4 mm wide blade
- Comfortable rubber grip



### CRL Super Heavy-Duty Breakaway Blades

Cat. No. HB5B

- Large 25 mm wide blade
- For use with H1K knife - see above
- Blades fit CRL retractable knives and other similar brands
- Comes with 5 blades



### CRL Olfa® Stainless Steel Shirt Pocket Knife

Cat. No. SVR1

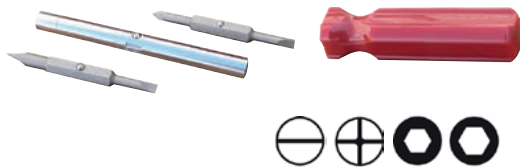
- Slim and compact design fits in to small places
- Stainless steel housing
- Pocket clip doubles as a blade snap away device
- Uses replacement blade AB10S - see below



### CRL Breakaway Blades

Cat. No. AB10S

- Super sharp breakaway blades for use with SVR1 - see above
- Fit CRL retractable blade knives and similar brands
- Comes with ten blades



### CRL 6-in-1 Screwdriver

Cat. No. 6N1

- Complete with Phillips and slotted bits



### CRL Masking Tape

- Multi-purpose masking tape

Cat. No. 4031

Size: 25.4 mm x 54.8 m

Cat. No. 4032

Size: 50.8 mm x 54.8 m

Cat. No. 4033

Size: 76.2 mm x 54.8 m



### CRL Gaffer Tape

Cat. No. 48T1CK50

Size: 50 mm x 50 m

Cat. No. 48T1CK25

Size: 25 mm x 50 m

# CRL Packing Tools

## CRL Plastic Shims

- Colour coded for easy selection by size
- Polypropylene material is extremely durable
- 1000 of one size per box



**Cat. No. KK201**  
100 x 20 x 1 mm White

**Cat. No. KK202**  
100 x 20 x 2 mm Blue

**Cat. No. KK203**  
100 x 20 x 3 mm Red

**Cat. No. KK204**  
100 x 20 x 4 mm Yellow

**Cat. No. KK205**  
100 x 20 x 5 mm Green

**Cat. No. KK206**  
100 x 20 x 6 mm Black

**Cat. No. KK221**  
100 x 22 x 1 mm White

**Cat. No. KK222**  
100 x 22 x 2 mm Blue

**Cat. No. KK223**  
100 x 22 x 3 mm Red

**Cat. No. KK224**  
100 x 22 x 4 mm Yellow

**Cat. No. KK225**  
100 x 22 x 5 mm Green

**Cat. No. KK226**  
100 x 22 x 6 mm Black

**Cat. No. KK241**  
100 x 24 x 1 mm White

**Cat. No. KK242**  
100 x 24 x 2 mm Red

**Cat. No. KK243**  
100 x 24 x 3 mm Red

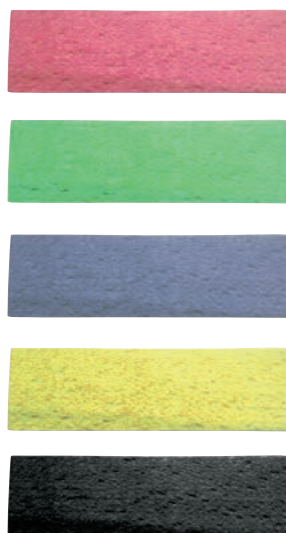
**Cat. No. KK244**  
100 x 24 x 4 mm Yellow

**Cat. No. KK245**  
100 x 24 x 5 mm Green

**Cat. No. KK246**  
100 x 24 x 6 mm Black

## CRL Wood Shims

- Spacer blocks of impregnated wood
- 100 per package



**Cat. No. KH802**  
80 x 8 x 2 mm Red

**Cat. No. KH803**  
80 x 8 x 3 mm Green

**Cat. No. KH804**  
80 x 8 x 4 mm Yellow

**Cat. No. KH805**  
80 x 8 x 5 mm Blue

**Cat. No. KH806**  
80 x 8 x 6 mm Black

**Cat. No. KH202**  
80 x 20 x 2 mm Red

**Cat. No. KH203**  
80 x 20 x 3 mm Green

**Cat. No. KH204**  
80 x 20 x 4 mm Yellow

**Cat. No. KH205**  
80 x 20 x 5 mm Blue

**Cat. No. KH206**  
80 x 20 x 6 mm Black

**Cat. No. KH221**  
80 x 22 x 1 mm Natural

**Cat. No. KH222**  
80 x 22 x 2 mm Red

**Cat. No. KH223**  
80 x 22 x 3 mm Green

**Cat. No. KH224**  
80 x 22 x 4 mm Yellow

**Cat. No. KH225**  
80 x 22 x 5 mm Blue

**Cat. No. KH226**  
80 x 22 x 6 mm Black

**Cat. No. KH241**  
80 x 24 x 1 mm Natural

**Cat. No. KH242**  
80 x 24 x 2 mm Red

**Cat. No. KH243**  
80 x 24 x 3 mm Green

**Cat. No. KH244**  
80 x 24 x 4 mm Yellow

**Cat. No. KH245**  
80 x 24 x 5 mm Blue

**Cat. No. KH246**  
80 x 24 x 6 mm Black

**Cat. No. KH302**  
80 x 30 x 2 mm Red

**Cat. No. KH303**  
80 x 30 x 3 mm Green

**Cat. No. KH304**  
80 x 30 x 4 mm Yellow

**Cat. No. KH305**  
80 x 30 x 5 mm Blue

**Cat. No. KH306**  
80 x 30 x 6 mm Black

# CRL Packing Tools

## CRL Setting Blocks

- Sold by the kilo
- Made of plastic
- Size: 10 mm width x 30 mm length

**Cat. No. 0737**  
Thickness: 3 mm

**Cat. No. 0738**  
Thickness: 4 mm

**Cat. No. 0739**  
Thickness: 5 mm



0737



0738



0739

## CRL Clear Plastic Setting Blocks

- Sold by the kilo
- Made of plastic
- Size: 10 mm width x 30 mm length
- 80±5 durometer hardness

**Cat. No. PSB040**  
Thickness: 1 mm

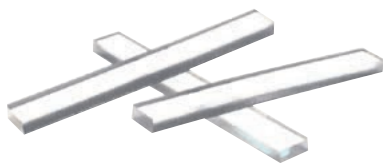
**Cat. No. PSB080**  
Thickness: 2 mm

**Cat. No. PSB125**  
Thickness: 3 mm

**Cat. No. PSB156**  
Thickness: 4 mm

**Cat. No. PSB250**  
Thickness: 6 mm

**Cat. No. PSB375**  
Thickness: 9 mm



Best Seller

## CRL Wood Composite Shims

- New technology in wood shims
- Snaps four times easier and cleaner than traditional wood
- 35% better load support than traditional wood

**Cat. No. NWCS8**  
Quantity: 32

**Cat. No. BWCS8**  
Quantity: 288







# CRL S338 sure-grip 203 mm vacuum lifter

Cat. No. S338

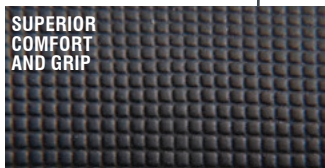
- Greatest lifting capacity of any 203 mm pump activated vacuum lifter
- One hand pump and attachment for safety when needed
- Superior “press-and-pump” attachment feature
- Built-in vacuum loss indicator
- Soft contoured sure-grip handle for comfort
- Sturdy moulded carrying case
- 68 kg lifting capacity



CONVENIENT  
VACUUM  
INDICATOR



SUPERIOR  
COMFORT  
AND GRIP



FAST  
RELEASE



Best Seller

## CRL Handling & Moving Tools



CE

### CRL Single Pad Lifter

- 114 mm diameter pad
- One-handed operation
- Strong, lightweight aluminium
- 30 kg lifting capacity

Cat. No. 05061



05062P

CE

### CRL Double Pad Suction Lifter

- 114 mm diameter pads
- Two individually operated pads
- Lightweight plastic design
- 60 kg lifting capacity

Cat. No. 05062P  
Plastic

Cat. No. 05062  
Aluminium



05062

CE

### CRL Double Pad Suction Lifter

- 114 mm diameter pads
- Handle design allows easy manoeuvring
- Strong, lightweight aluminium
- 60 kg lifting capacity



05063P

CE

### CRL Triple Pad Suction Lifter

- 114 mm diameter pads
- Three suction pads individually operated
- Strong, lightweight aluminium
- 100 kg lifting capacity

Cat. No. 05063P  
Plastic

Cat. No. 05063  
Aluminium



05063

CE

### CRL Triple Pad Suction Lifter

- 114 mm diameter pads
- Three suction pads individually operated
- Lightweight plastic design
- 100 kg lifting capacity

## CRL Handling & Moving Tools



### CRL Woods Powr-Grip® Vacuum Cups

- Durable metal handle
- Fast attachment on smooth, non-porous flat surfaces
- Red-line indicator warns user of any vacuum loss
- Check valve allows re-pumping without loss of remaining vacuum
- Release valve lever permits quick, complete release
- Eligible for exchange program

#### Cat. No. W4950

Diameter: 203 mm  
Lifting Capacity: 57 kg/125 lbs

#### Cat. No. W5450

Diameter: 229 mm  
Lifting Capacity: 68 kg/150 lbs

#### Cat. No. W6450

Diameter: 254 mm  
Lifting Capacity: 79 kg/175 lbs



### CRL S338 Sure-Grip 203mm Vacuum Lifter

Cat. No. S338

- Greatest lifting capacity of any 203 mm pump activated vacuum lifter
- One hand pump and attachment for safety when needed
- Superior "press-and-pump" attachment feature
- Built-in vacuum loss indicator
- Soft contoured sure-grip handle for comfort
- Sturdy moulded carrying case
- 68 kg lifting capacity



### CRL Vacuum Ratchet Tensioning Kit

Cat. No. G0284

- Uses S108 vacuum lifter mounting points
- Pulls with tremendous force
- Ideal for pulling and holding stone pieces together while glue cures
- Includes 2 x S108 vacuum lifters
- 147 kg lifting capacity

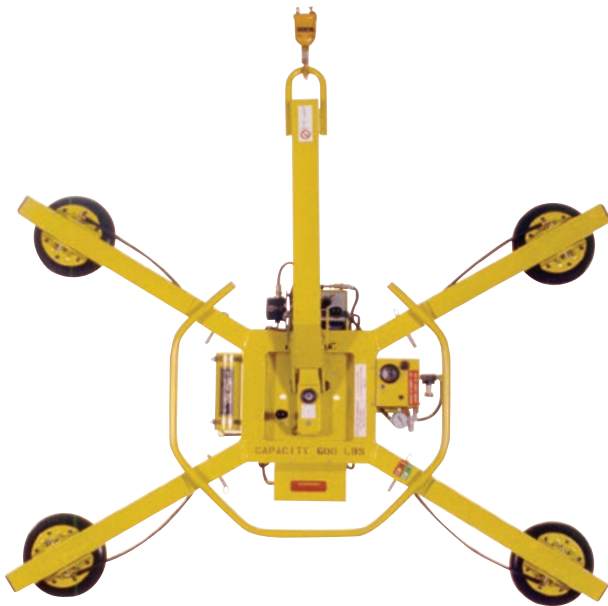
### CRL Leather Lifting Sling

Cat. No. 0508

- Heavy duty leather sling
- 85 kg lifting capacity



## CRL Handling & Moving Tools



### CRL Wood's Powr-grip® Manual Rotator/ Tilter Vacuum Lifting Frame

- Cord-free operation with on-board gel cell battery
  - Four 280 mm diameter lipped pads
  - Locks in place every quarter turn
  - Three configurations all from the same unit
  - Full 360° rotation with tilt from any position
  - Dual vacuum system
  - 12V DC
  - High holding strength and safe to use due to the dual-circuit suction system
  - 320 kg lifting capacity
  - **Can be used with remote control EUW95729BM**
- Get specifications online at [crlaurence.co.uk](http://crlaurence.co.uk)

Cat. No. EUMRT411LDC

Wood's  
**Powr-Grip®**

CE

**SPARE PARTS  
AVAILABLE**



### CRL Wood's Powr-grip® Single Channel D.C. Vacuum Lifting frame

- Four 280 mm diameter lipped pads
- High holding strength and safe to use due to the dual-circuit suction system
- 180° edgewise rotation
- 90° tilt, vertical to flat
- 12V DC
- Automatic 'self-test' function ensures that the cups are safely loaded
- New coloured display shows at first glance when a dangerous situation is detected
- Warns of danger with clear visual and audible signals
- Smart-power-managment enables a long lasting battery in a single charge
- Continued monitoring of the battery indicates when the battery level becomes too low
- Multi-stage alarm system assesses the risks in dangerous situations
- 320 kg lifting capacity
- **Can be used with remote control EUW94117BM**

Cat. No. EUP1104DCO

Wood's  
**Powr-Grip®**

CE

**CONTACT  
CRL FOR  
CURRENT  
PRICING**

**Suitable for lifting stone and glass up to 320 kg**

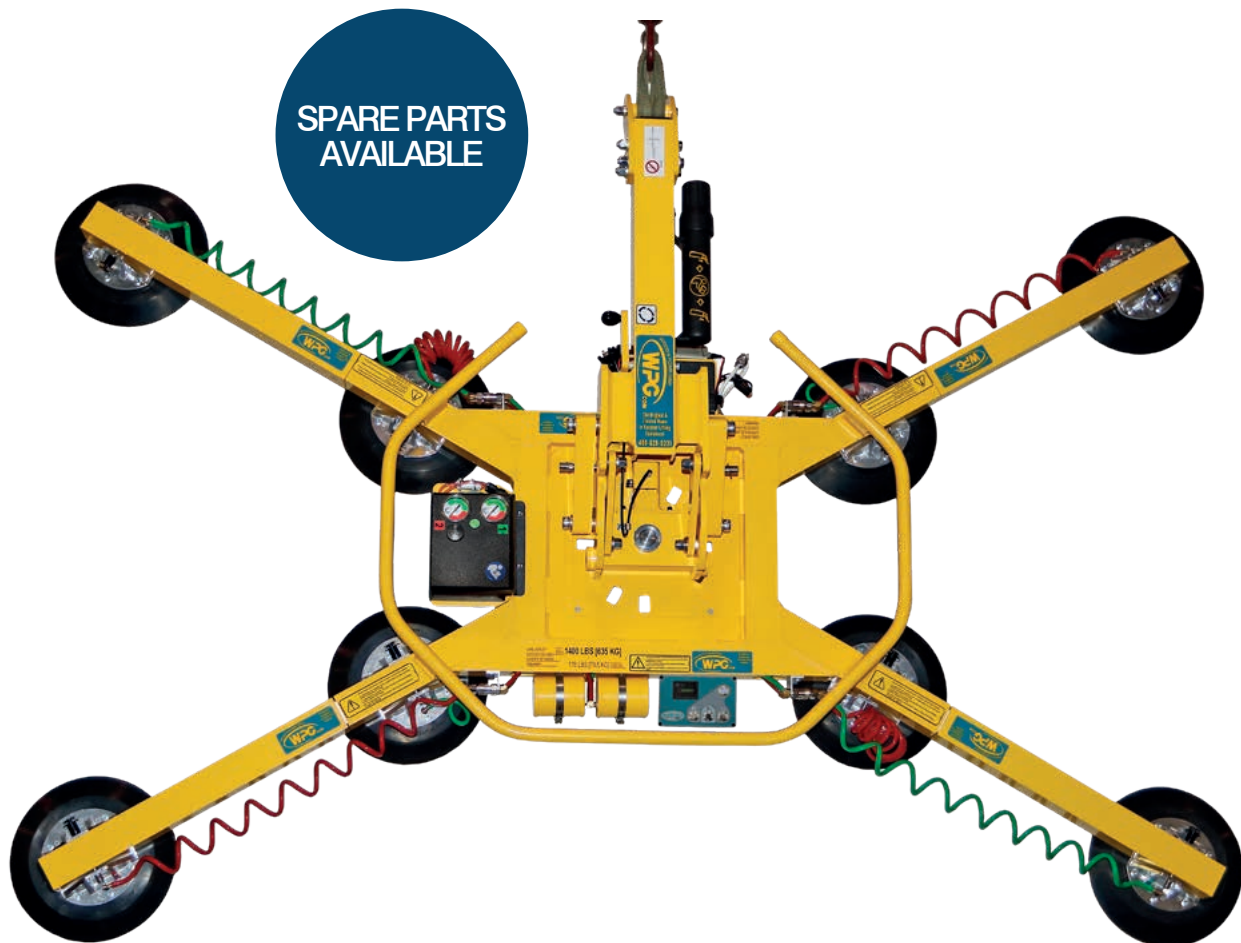
**Battery operated lifting frames used for site work**



# CRL Wood's Powr-grip® Quadra Tilt Rotator



- Eight 280 mm diameter lipped pads
  - High holding strength and safe to use due to the dual-circuit suction system
  - Load movement: manual rotation 360° edgewise with automatic locking at each 1/4 revolution, assisted manual tilt 90° between upright and flat
  - 12V DC
  - Automatic 'self-test' function ensures that the cups are safely loaded
  - New coloured display shows at first glance when a dangerous situation is detected
  - Warns of danger with clear visual and audible signals
  - Smart-power-management enables a long lasting battery in a single charge
  - Continued monitoring of the battery indicates when the battery level becomes too low
  - Multi-stage alarm system assesses the risks in dangerous situations
  - 635 kg lifting capacity
  - **Can be used with remote control EUW95729W**
- Get specifications online at [crlaurence.co.uk](http://crlaurence.co.uk)



Suitable for lifting stone and glass up to 635 kg

Please contact our stone operations department for more information

# CRL Handling and Moving Tools



## CRL Woods P2 Two Channel Lifter for Flat Materials

Cat. No. EUP211047DC0

- Eight 280 mm diameter lipped pads
- 12V DC
- The dual vacuum system features two vacuum line circuits of 2.13 m distance
- Specially designed to reduce the risk of falling loads
- 180° edgewise rotation
- 90° tilt, vertical to flat
- 635 kg lifting capacity

Get specification online at [crlaurence.co.uk](http://crlaurence.co.uk)



## CRL Aardwolf Slab Lifter

Cat. No. 5009AW50

- Designed to lift and move slab-form loads
- Easy and safe transportation of stones of various thicknesses
- Spring-loaded latch automatically releases the lifter from the slab once the slab has been fully lowered to the ground
- Single-person operation
- 1000 kg lifting capacity
- Other sizes available on request

Safe, versatile and secure



GG1

GG2

## CRL Grippers

- Aids in lifting large sheets of stone
- Reduces hand fatigue

Cat. No. GG1

Lifting Capacity: 100 kg/220 lbs  
2 per pack

Cat. No. GG2

Lifting Capacity: 200 kg/440 lbs  
1 per pack



## CRL Blue Transport Pads

- Medium density
- Low-tack, pressure sensitive, adhesive
- Leaves no adhesive residue or ghosting marks

Cat. No. 1407E

Size: 23 mm x 18 mm x 4 mm  
Quantity: 1,000 pads per roll

Cat. No. 1407L0G10

Size: 25 mm x 19 mm x 4 mm  
Quantity: 10,000 pads per roll

Cat. No. 1407L0G15

Size: 22 mm x 19 mm x 4 mm  
Quantity: 15,000 pads per roll

Cat. No. 1407L0G20

Size: 25 mm x 19 mm x 4 mm  
Quantity: 20,000 pads per roll

### CRL Slab Dolly

Cat. No. GT02

- Safe stone slab transport with large 272 kg capacity
- Self clamping action locks loads up to 50.8 mm thick
- One person can load and manoeuvre



## CRL Handling & Moving Tools

---

### CRL All Terrain Dolly

Cat. No. ATD1

- Exclusive to CRL
- Terrific for moving heavy stone slabs around the job site
- Goes where other dollies won't
- Built-In 203 mm Wood's Powr-Grip® Vacuum Cup
- Includes a set of our RB200 Roller Blocks
- 181 kg load capacity



RB200 included



### CRL Self-Locking Slab Dolly

Cat. No. GSD2

- Designed with "self-locking jaws" for transporting slabs within the shop environment or from your truck to the delivery site
- 279 mm diameter solid rubber wheels
- Vulcanized rubber frame channel, which protects stone against chipping or damage while in the process of being moved
- Inside width of the channel: 102 mm
- Overall length of the vulcanized rubber "V" channel: 508 mm
- Load capacity: 399 kg





Your orders are shipped from our 110,000 square foot premises which has a product display area and large trade counter. Our dedicated sales team are also on hand to assist you.





## About CRL Quartz

---

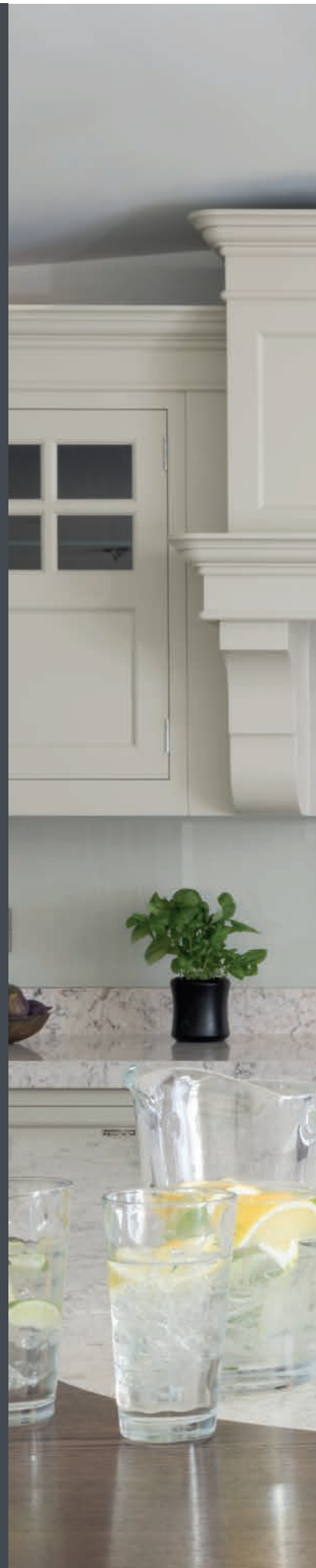
With more than twenty years of experience in the stone industry, CRL Stone has developed a comprehensive range of beautiful, engineered quartz surfaces, created to meet the demands of modern living. Hard wearing and easy to care for, CRL Quartz is ideal for the kitchen and bathroom where durability and flexible design are paramount.

CRL Quartz is scratch, heat and stain resistant. Unlike natural materials such as marble, CRL Quartz never needs to be sealed. Requiring minimum maintenance to keep it looking as good as new, the non-porous surface makes cleaning simple, with soap and water or a mild detergent is all that is needed.

Offering a versatile design solution appropriate for any setting, CRL Quartz is available in a large range of colours, with a polished or honed finish. In thicknesses of 20mm and 30mm, the surface comes in an extra-large slab format, allowing for greater consistency in design over large spaces such as kitchen worktops.

CRL Quartz comes with a 25-year warranty for added peace of mind.

For more information, or to order your free brochure and samples, visit [crlquartz.co.uk](http://crlquartz.co.uk)

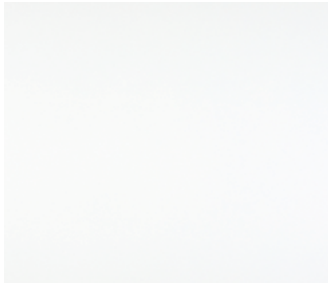




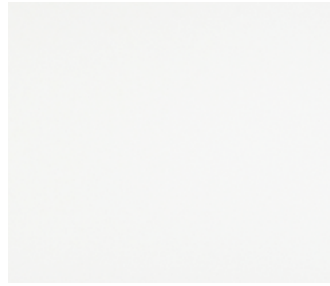
RIVER WHITE - OZ110

# The Collection

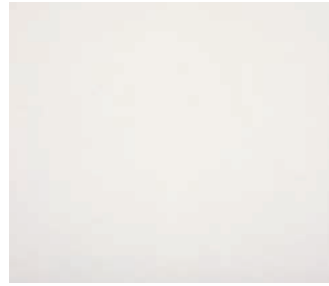
---



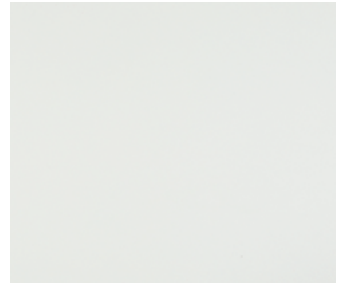
Ultra White  
QZ100



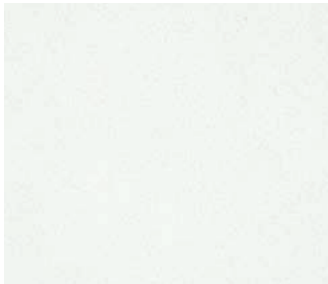
Clear White  
QZ121



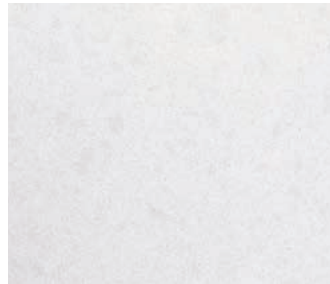
Chalk  
QZ130



Pura White  
QZ120



Polar White  
QZ131



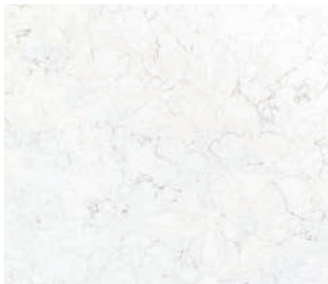
Ice  
QZ102



Arctic Shimmer  
QZ138



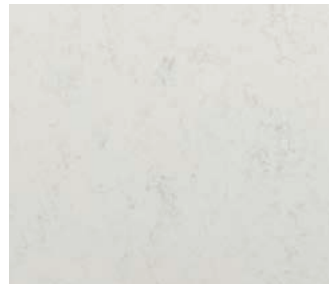
Quartz Reflection  
QZ126



White Water  
QZ119



White Carrara  
QZ101



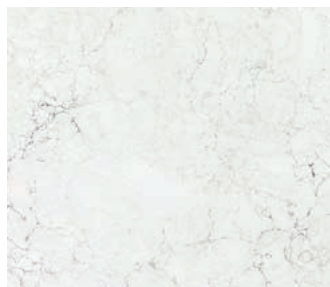
Carrara  
QZ122



Verona  
QZ127



Knightsbridge  
QZ103



Statuario Bianco  
QZ135



Vicenza  
QZ136



River White  
QZ110



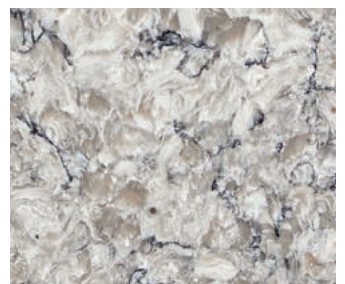
Atlantic Gris  
QZ134



Monte Bianco  
QZ132

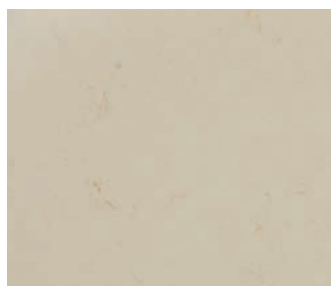


Montana Gris  
QZ133

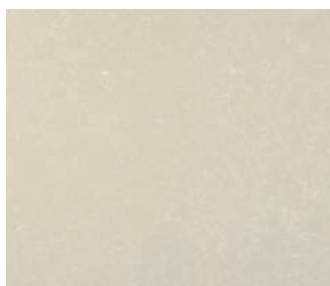


Colorado  
QZ111

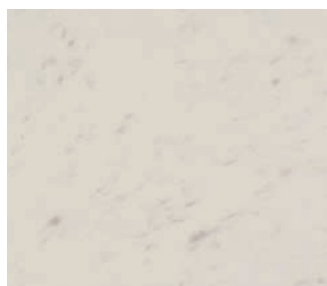




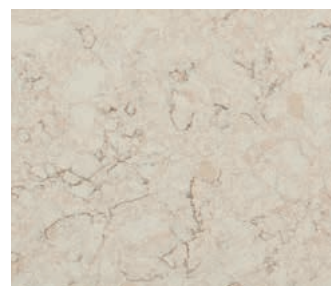
Ivory River  
QZ112



Kalahari  
QZ125



Regency White  
QZ123



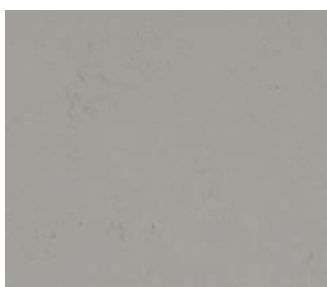
Savannah  
QZ113



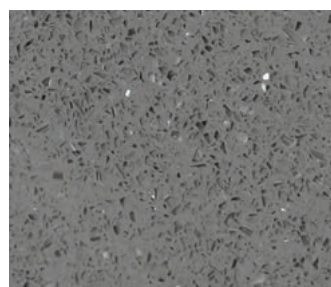
Antico  
QZ115



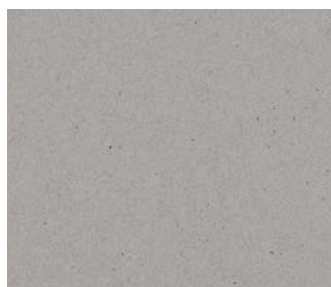
Sahara  
QZ109



Mystic Grey  
QZ104



Grey Reflection  
QZ137



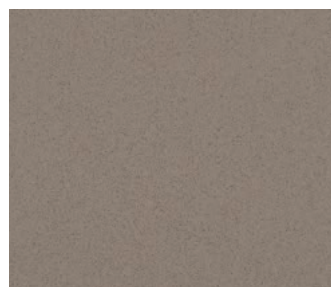
Soft Concrete  
QZ105



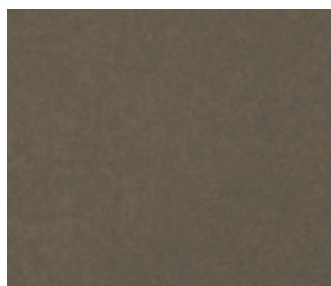
Concrete Gris Honed  
QZ106



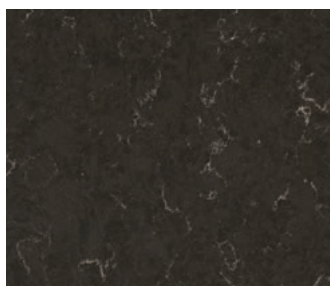
Grey Mist  
QZ108



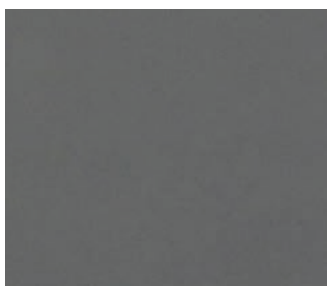
Soft Truffle  
QZ116



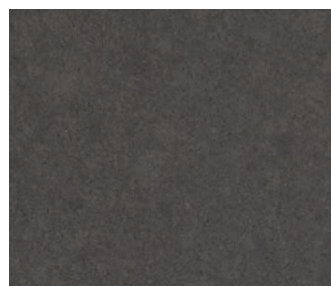
Forest  
QZ129



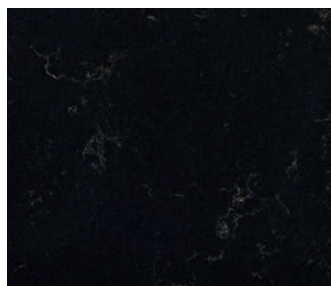
Chestnut  
QZ118



Windsor Grey  
QZ124



Gallant Grey  
QZ107



Gold Noir  
QZ117



Midnight  
QZ128

**6** new colours  
coming in  
Spring 2019



To find out more and  
explore the range  
visit [www.crlquartz.co.uk](http://www.crlquartz.co.uk)

# Features & Advantages

---



## Resistant to Wear & Tear

Thanks to CRL Quartz technical characteristics, this is one of the most resistant worktop on the market, ideal for use in the kitchen and the bathroom.



## Highly Scratch Resistant

Food can be cut directly on top of the surface without it being damaged. Even so, adapted cutting boards should be used for cutting.



## Stain Resistant

CRL Quartz is not affected by products like solvents, detergents, bleach, oil, vinegar or citrus juice, provided that the stains are cleaned away within 24 hours.



## Heat Resistant

It does not burn or give off smoke or toxic substances when exposed to high temperatures.



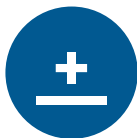
## Impact Resistant

CRL Quartz has a high resistance to knocks and impacts.



## Easy to Clean & Care For

No extra care or special products are needed to clean it. Stains can be removed with water or mild cleaning products.



## Hygiene

Because it is a non-porous surface, the build-up of bacteria or mould is prevented, and food can be placed in direct contact with it.



## 25-Year Warranty

Visit [crlquartz.co.uk](http://crlquartz.co.uk) to register your surface and activate your warranty.





# About Ceralsio ceramic

---

Ceralsio is a beautiful, hard-wearing and versatile range of ceramic surfaces, built for the demands of modern living.

Thanks to its lack of pores, it is completely impermeable and highly stain resistant. Its many benefits also include a strong resistant to wear and tear, scratch and heat. As a very hard material it is suitable for kitchen and bathroom countertops, flooring and wall-cladding. Its colour and texture remain unchanged even when Ceralsio is used outdoors, since it can withstand the effects of ultra-violet rays without its surface appearance being altered in any way.

Ceralsio has been developed by using the lightest grade of ceramic materials the selection and fusion of the purest of minerals, compacted at a force of 4,000 kg/m<sup>2</sup> and sintered at temperatures of over 1200°C. The highly innovative manufacturing process creates unique, unrepeatable finishes, thanks to the use of the high-precision "Full Digital" printing system.

Thanks to its properties, Ceralsio guarantees versatile, eco-friendly, innovative surfaces that help to make life easier and more convenient.

Ceralsio comes with a 10-year warranty for added peace of mind.

For more information, or to order your free brochure and samples, visit **[ceralsio.co.uk](http://ceralsio.co.uk)**





OCEAN STONE - TEXTURED - CER204T

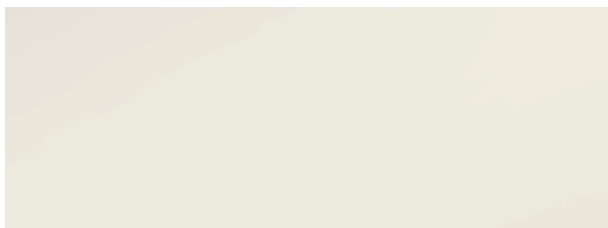


# colour collection

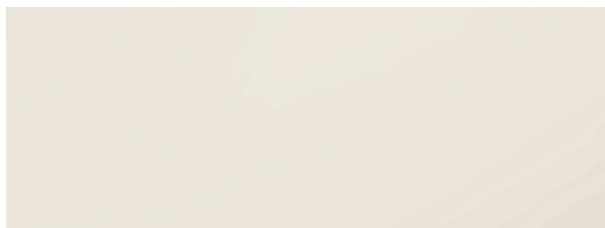
The Ceralsio collection has been inspired by nature itself and includes classic surfaces such as Soft White, right through to sophisticated, strong designs such as Statuario and Marquina.

Ceralsio is available in a large range of colours and in a 12 mm thickness.

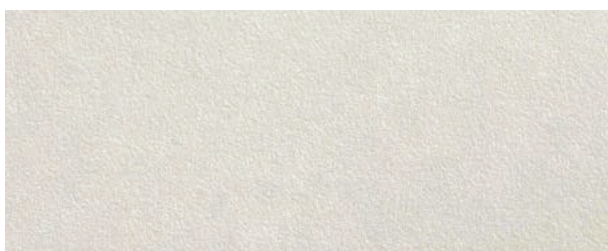
Ceralsio is available in a natural, textured, satin or polished finish.



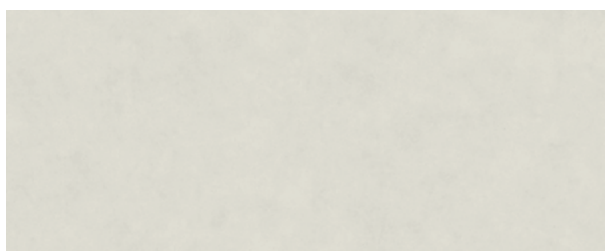
**ARCTIC WHITE - NATURAL**  
CER300N



**ARCTIC WHITE - POLISHED**  
CER300P



**SOFT WHITE - TEXTURED**  
CER202T



**SOFT WHITE - NATURAL**  
CER202N



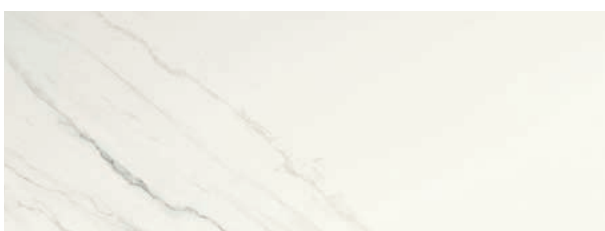
**STATUARIO - NATURAL**  
CER401N



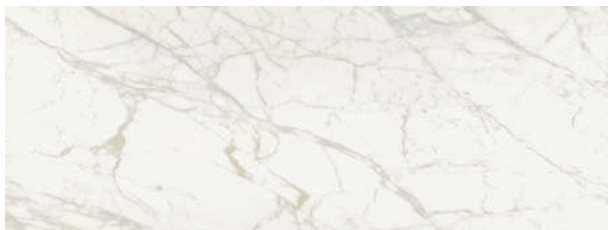
**STATUARIO - POLISHED**  
CER401P



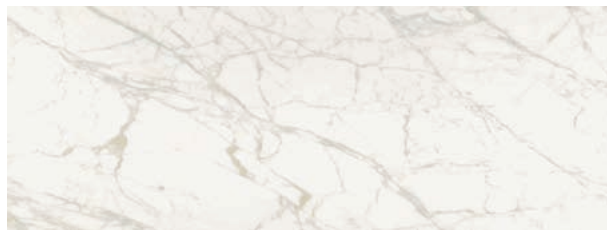
**CALACATTA GRIS - POLISHED**  
CER302P



**CALACATTA GRIS - NATURAL**  
CER302N



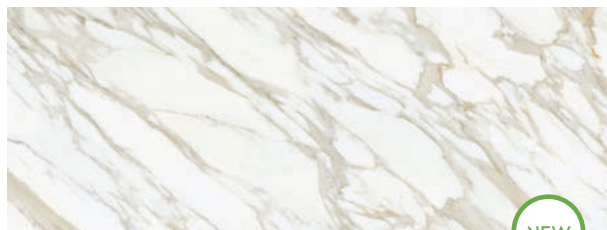
**CARRARA VAGLI - NATURAL**  
CER402N



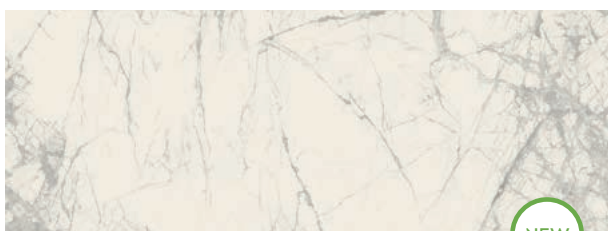
**CARRARA VAGLI - POLISHED**  
CER402P



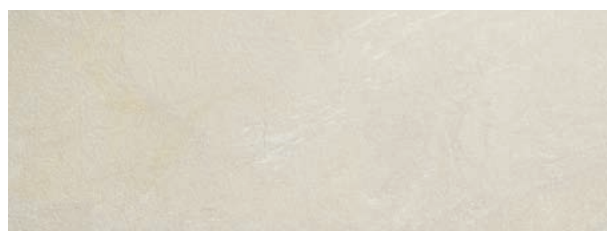
**CALACATTA EXTREME - NATURAL**  
CER407N



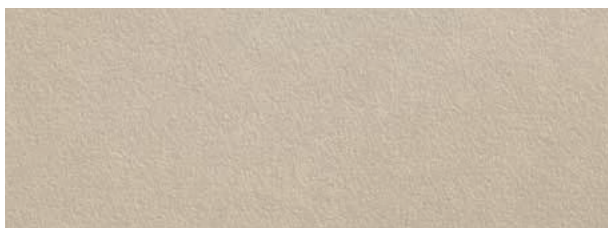
**CALACATTA EXTREME - POLISHED**  
CER407P



**CERVINO - SATIN**  
CER409S



**LIMESTONE - TEXTURED**  
CER205T



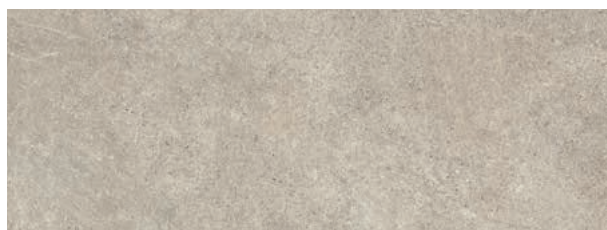
**STONE - TEXTURED**  
CER100T



**STONE - NATURAL**  
CER100N



**OATMEAL - TEXTURED**  
CER207T



**HESSIAN - NATURAL**  
CER200N





**OXFORD GREY - NATURAL**  
CER303N



**OXFORD GREY - POLISHED**  
CER303P



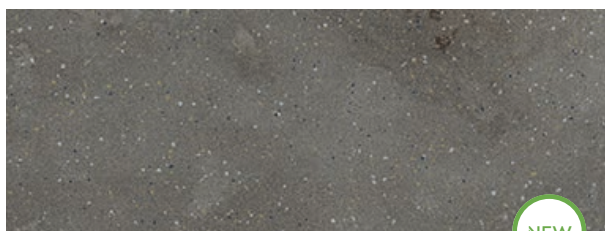
**COSMOPOLITAN SILVER - NATURAL**  
CER406N



**COSMOPOLITAN GREY - NATURAL**  
CER405N



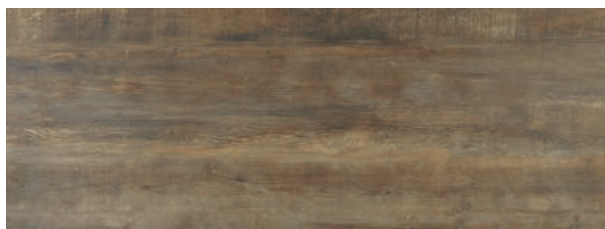
**OCEAN STONE - TEXTURED**  
CER204T



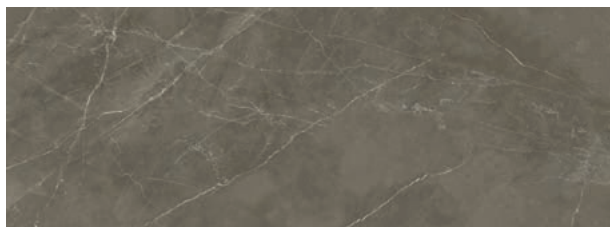
**FERRO VECCHIO - NATURAL**  
CER408N



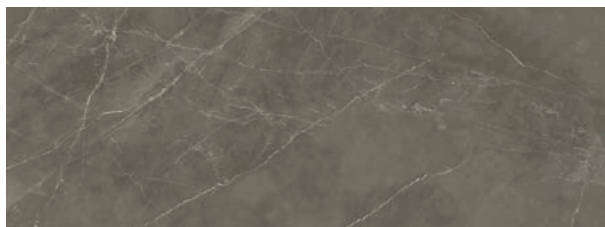
**RIO MARRON - NATURAL**  
CER203N



**ARIZONA - NATURAL**  
CER209N



**PIETRA GREY - NATURAL**  
CER403N



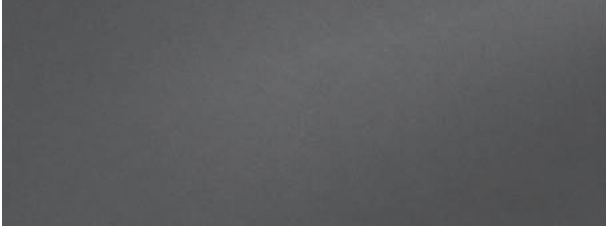
**PIETRA GREY - POLISHED**  
CER403P



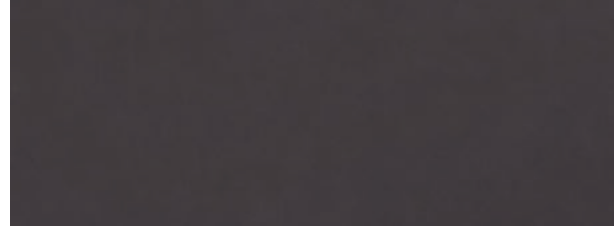
**PLATINUM - NATURAL**  
CER201N



**SLATE - TEXTURED**  
CER206T



**PEWTER - TEXTURED**  
CER103T



**CHARCOAL - NATURAL**  
CER101N



**MARQUINA - NATURAL**  
CER208N



**OSSIDO - NATURAL**  
CER404N

Samples from our Ceralsio collection  
are available to order online now.

Visit [www.ceralsio.co.uk](http://www.ceralsio.co.uk)

Please note: Every effort is made to ensure swatch images shown here are  
representative of the actual surface, however limitations of the printing  
process mean actual colours may vary.

# features and advantages

---



## Resistant to wear and tear

Thanks to Ceralsio technical characteristics, this is the most highly resistant countertop on the market, ideal for use indoors and out.



## Stain resistant

Ceralsio is not affected by products like solvents, detergents, bleach, oil, vinegar or citrus juice, provided that the stains are cleaned away within 24 hours.



## Highly scratch resistant

Food can be cut directly on top of the surface without it being damaged. Even so, ceramic cutting boards, like Ceralsio, or boards made of other materials should be used for cutting.



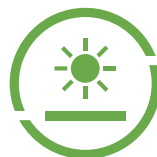
## Hygiene

Because it is a non-porous surface, the build-up of bacteria or mould is prevented, and food can be placed in direct contact with it.



## Resistant to frost and ice

Its low water absorption rate of less than 0.2% makes it ideal for outdoor environments where frost and ice is common.



## Resistant to ultra-violet rays

Ceralsio surfaces are colourfast despite the passing of time, even when used outdoors.



## Heat resistant

It does not burn or give off smoke or toxic substances when exposed to high temperatures. Hot cooking utensils like frying pans or saucepans can be rested on its surface without it being damaged.



## Bending strength

It can withstand a high weight without bending or becoming deformed, with the entire surface remaining flat.



## Impact resistant

Ceralsio has a high resistance to knocks and impacts by everyday objects or utensils. (Everyday objects found in kitchens, restaurants, laboratories etc).



## 10 Year Warranty

Visit [ceralsio.co.uk](https://ceralsio.co.uk) to register your surface and activate your warranty.



## Easy to clean and care for

No extra care or special products are needed to clean it. Stains can be removed with water or mild cleaning products.



CERALSIO - MARQUINA - NATURAL - CER208N



# Samples and Promotional Products

CRL Stone provides a powerful visual aid for marketing CRL Quartz and Ceralsio ranges including sample trays, stands, towers, and folders. The samples themselves gives the opportunity to see the many qualities of the materials close up.

CRL also provides branded notebooks, pens and mugs.

For more information, or to order your free samples, visit [crlstone.co.uk](http://crlstone.co.uk)



Sample towers

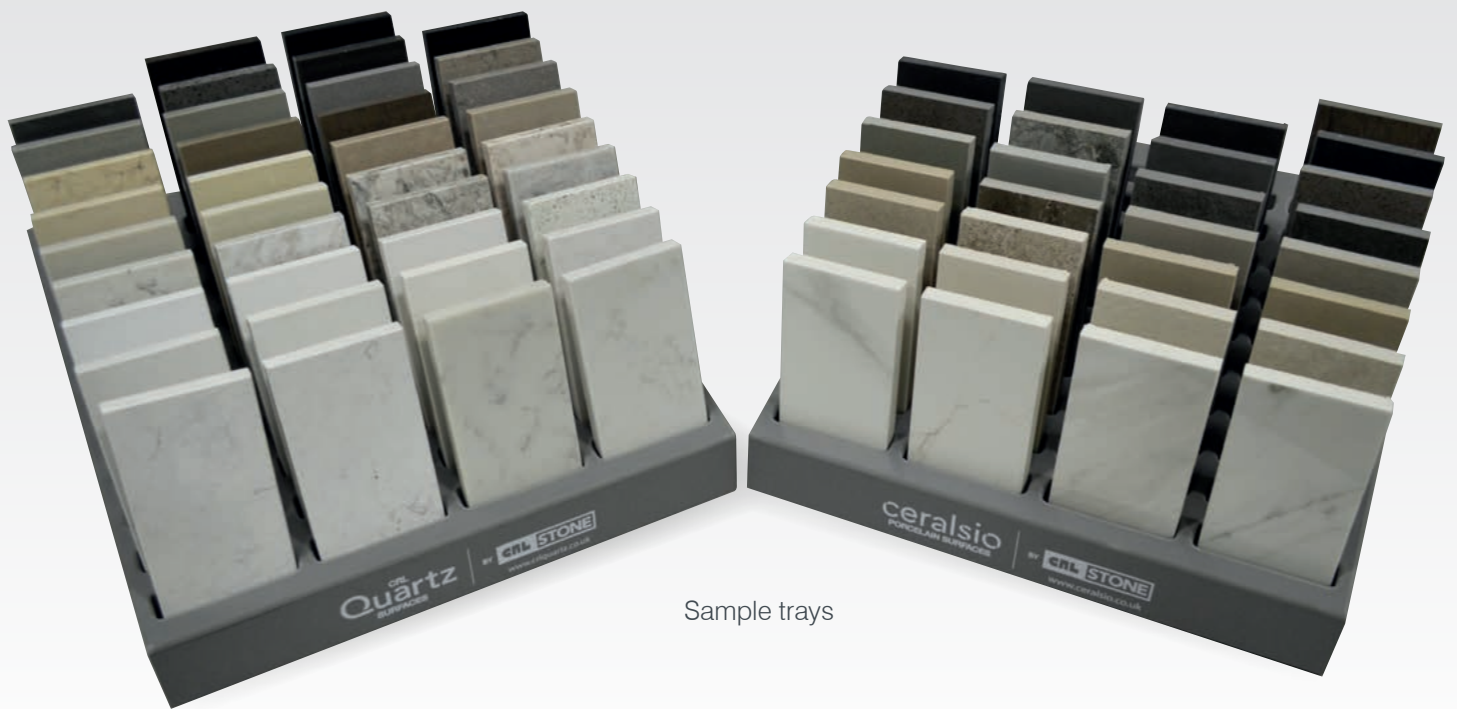
Sample stands

Notebooks

Pens

Mugs





Sample trays



Sample folders  
(incl. Renaissance Collection)

# INDEX

## A

---

### ADHESIVES

AKEMI® Adhesives	53-56, 59-61
Hardner for Poly and Acrylic Adhesives	57
Multi-Spray Adhesive	23
Splashback Adhesives	70

### AFTERCARE

AKEMI® Anti-Slip R 9	81
AKEMI® Brillo Silicone Polish	81
AKEMI® Crystal Clean	82
AKEMI® Liquid Polish	81
AKEMI® Quartz Clean And Care	83
AKEMI® Stone Polish - Silicone Based	81
AKEMI® Triple Effect	83
Counter Top Spray	83
Solid Surface Cleaner	83
Trigger Spray Bottle	84

ANGLE GRINDERS	11
----------------	----

## B

---

BACKING PADS	13-15
--------------	-------

BACKING PLATES	32
----------------	----

### BLADES

Angle Grinder for Engineered Stone, Granite, Concrete and Natural Stone	17-18
Angle Grinder for Marble, Porcelain and Ceramic	19
Breakaway Blades	99
Super Heavy-Duty Breakaway Blades	99
Knife Blades	96
Razor Blades	96
Speciality Blades	19

### BLIND DRILLS

For Ultra Compact Surfaces	38
For Granite and Marble	38

## C

---

### CARE KITS

AKEMI® Quartz Care Kit	82
AKEMI® Stone Care Kit	82

CARTON CUTTER	97
---------------	----

CAULK	70
-------	----

### CLAMPS

Quick-Grip® Bar Clamp	67
Quick-Grip® Bar Clamp/Spreader	67
Solo One-Handed Clamp	67
Spring Clamps	67

### CLEANING PRODUCTS

AKEMI® Algae and Mildew Remover Power	78
AKEMI® Cleaner A	78
AKEMI® Cleaner I	78
AKEMI® Disinfectant Cleaner	77
AKEMI® Graffiti Remover	78
AKEMI® Mild Stone Soap	76
AKEMI® Object Disinfectant	76
AKEMI® Oil and Grease Remover Paste	77
AKEMI® Rust Remover	77
AKEMI® Rust Remover Paste	78
AKEMI® Stone Cleaner	76
AKEMI® Surface Disinfectant	76
AKEMI® Wax Stripper	77
Glass and Mirror Cleaner	75
Stone Solid Surface Cleaner	75

### CNC ROUTERS

ADI 'The Solution Router'	39
ADI Magnifica Router	39
ADI Hydro Router	39
ADI Router for Ultra Compact Surfaces Materials	39
ADI Router for Marble	40

### COLOURING PASTE, ADHESIVE

Spectrum Paste	53
AKEMI® Colouring Paste for Marble Filler	58
AKEMI® Colouring Paste for AkepoX Adhesives	58

## CORE DRILLS

ADI Continuous Rim with Slots for Quartz and Granite	37
ADI Core Drill for Ultra Compact Surfaces	38
ADI Thin Wall Core Drill for Granite	37
ADI Thin Wall Core Drill for Ultra Compact Surfaces	38
Granite Core Drill for Quartz and Granite	37

COREX TEMPLATING SHEETS	95
-------------------------	----

CORNER CUTTING TEMPLATE	96
-------------------------	----

CUP WHEELS, SPECIALITY	19
------------------------	----

## D

---

### DIAMOND BRIDGE SAW BLADES

For Ceralsio and other Ultra Compact Surfaces	20
Silent Diamond Saw Blade for Marble	20
Silent Laser Welded Diamond Saw Blade for Granite and Quartz	20

### DOLLIES

All Terrain Dolly	110
Self-Locking Slab Dolly	110
Slab Dolly	109

DRAINER GROOVING TOOL FOR GRANITE AND QUARTZ	48
--	----

### DRILL BITS

Super Tip Granite, Marble and Tile Drill Bit	40
Tungsten Carbide Twist Drill with Parallel Shank Fit	40

## E

---

### EDGE PROFILES

ADI AR30 Top/Bottom Chamfer Profile	43
ADI D30 Sharks Nose Profile	42
ADI F30 Ogee Profile	42
ADI T30 Top/Bottom Radius Profile	43
ADI V30 Bull Nose Profile	42
ADI Z40 Flat Edge Profile	42
ADI ZR30 Top Radius	43
ADI ZS30 Top Chamfer	43
Edge Profile Guide	41

## F

---

### FILLERS

AKEMI® Fillers	56-57, 59
Hardner B Liquid	55
Solido	55
Solido Quarzo	55

### FINISHING ACCESSORIES

Felt Donut	29
Felt Mop - Tie On	29
Hyfin Polishing Bar	29
Stitched Mop	29
Wire Wool	29

FIRST AID KITS	92
----------------	----

## G

---

G-CLIPS SINK FIXER	89
--------------------	----

### GUNS

AKEMI® Gun for AKEMI® Colourbond	54, 62
AKEMI® Plastic Applicator Gun	62
Caulking Guns	71
Skeleton Applicator Gun	62
Skeleton Gun Adaptor	62

## H

---

### HAND POLISHING ACCESSORIES

Diamond Hand Pads	27
Diamond Hand Sheets	28
Hand-E-Files Diamond Coated	28
Polishing Wax	28
Stucco Wax Sticks	28

### HOLDERS & SCRAPERS

Razor Blade Holder and Scraper	97
Razor Blade Holder and Window Scraper	97
Razor Blade Knife	97
Red Devil Scraper	97

## I

### IMPREGNATING PRODUCTS

AKEMI® Anti-Graffiti	80
AKEMI® Colour Intensifier	80
AKEMI® Colour Intensifier W	80
AKEMI® Impregnation Remover	80
AKEMI® Stain Repellent W	79
AKEMI® Stone Impregnation	79
AKEMI® Transformer	79
AKEMI® Darkner Super	80

## K

### KNIVES

Pocket Knife	99
Retractable Blade Knife	99
Tooling Knife	72
Utility Knife	98

## L

LEATHER LIFTING SLING	105
-----------------------	-----

## M

### MARKING TOOLS

Chinagraph Pencils	89
Crayons	89

### MEASURING TOOLS

Phenolic L-Square Unbraced	88
Set Squares	88
Sole Piece Square Braced	88
Stanley® FatMax™	88

MILLING CROWN FOR GRANITE	40
---------------------------	----

## P

### POLISHING DISCS

AS70 Discs with M14 Fitting	25
Dia Solid Discs	25
Dry Polishing Discs with Hook & Loop Backing	24
Kwik Flex Discs	25
Wet Polishing Discs with Hook & Loop Backing	24

### POLISHING MACHINES

Flex Wet Polishing Machine	9
Flex Dry Polishing Machine/Grinder	9
Gison Air Wet Stone Sander/Polisher	10
Makita® Wet Stone Polisher	10

## R

REPAIR KITS	63
-------------	----

## S

### SAFETY ACCESSORIES

Disposable Dust Mask	90
Disposable Foam Ear Plugs	91
Gloves	91
Rubber Apron	90
Safety Goggles	90
Safety Helmet	90
Safety Spectacles	90
Tool Pouch	91
Tyvek® Shoe Covers	90

### SANDING DISCS

Plain Backed Discs	23
Hook & Loop Backed Discs	23

SCREWDRIVER	99
-------------	----

SEALANT	69
---------	----

### SEALING PRODUCTS

AKEMI® Stone Sealer	81
---------------------	----

### SETTING BLOCKS

Plastic Setting Blocks	101
Clear Plastic Setting Blocks	101

## SHIMS

Plastic Shims	100
Wood Shims	100
Wood Composite Shims	101

## SILICONE

Neutral Cure Low Modulus Silicone	69
Crystal Clear Silicone	69

## SILICONES & SEALANTS ACCESSORIES

Little Red Nozzle Caps	71
Screw-On Silicone Nozzles	54, 71
Nozzle Cutter	71
Silicone Spatula	72
8-In-1 Painters Tool	72
E.Z. Cut Out Tool	72

## SLAB GRIPPERS

108

## SLAB LIFTER

108

## SPIRAFLEX DISCS

23

## T

### TAPE

Gaffer Tape	99
Masking Tape	99

## TRANSPORT PADS

108

## U

## ULTRA COMPACT SURFACES TOOLING

49

## V

### VACUUM LIFTERS

Sure-Grip	103
Single Pad	104
Double Pad	104
Triple Pad	104
Wood's Powr-Grip®	105

### VACUUM LIFTING FRAMES

Wood's Powr-Grip® Manual Rotator/Tilter	106
Wood's Powr-Grip® Quadra Tilt Rotator	107
Wood's Powr-Grip® Single channel D.C.	106
Wood's® P2 Two Channel Lifter for Flat Materials	108

## VACUUM RATCHET TENSIONING KIT

10

## W

### WHEELS

#### CUP WHEELS

Carborundum	23
for Bullnose Preparation	31
for Chamfer Preparation	31
Diamond Cup Wheel	31

#### DRAINER GROOVE WHEELS

for 'C' Axis for Granite	48
for 'C' Axis for Marble	48

#### EDGE POLISHING WHEELS

Abressa Wheels	32
Adria Wheels	33
Calibrating Wheels	31
Dry Cut Blades	31

#### MILLING WHEELS

ADI Super-Duty for Engineered Stone and Granite (Ultra-High Speed)	45
ADI Milling Wheel	45

#### PRE-CUTTING WHEELS

ADI Profile X Pre-Cutting Wheel	44
ADI Profile Y Pre-Cutting Wheels for Granite or Quartz	44

#### RECESS DRAINER WHEELS

ADI Recess Drainer Chanfer Wheels	45
ADI Recess Drainer Wheels for Granite with Built In 60° Contour	46
ADI Recess Drainer Wheels for Engineered Stone with Built In 60° Contour	47

#### TILT WHEELS

44

#### ZIP DIAMOND RESIN WHEELS

34-35

### WIPES

Lint-Free Wipes	84
Micro Fibre Wipes	84
Monster Roll Wipes	84
Wipes in a Bucket	84

## Z

### Z-CLIP SINK FIXER

89





Charles Babbage Avenue  
Kingsway Business Park  
Rochdale  
OL16 4NW  
United Kingdom

Telephone: +44 1706 863 600  
International Freephone: 00 800 0421 6144  
Freefax: 00 800 0262 3299  
E-Mail: [tools@crlstone.co.uk](mailto:tools@crlstone.co.uk)